

BOOKLET PANES

Watermarked **USPS**

1900

Perforated 12

RED

GUIDE LINE →

NH

\$900

GUIDE
LINE →

279c
ORANGE-RED



279c 2325 12c
ORANGE-RED

NH
DISORDERED
SUM



← STAPLE STAINS

4547 RED

RED
NH





MISSING TOP
SELVAGE.

BOOKLET PANES

Watermarked USPS

1903-07

Perforated 12



300 2400 NH
\$1.150
2,250



500 H-500

BOOKLET PANES

Watermarked **USPS**

1903-07

Perforated 12



1¢
BLUE GREEN
Scott No. 300b



NH / DISTURBED GUM
Paid 100-

BOOKLET PANES

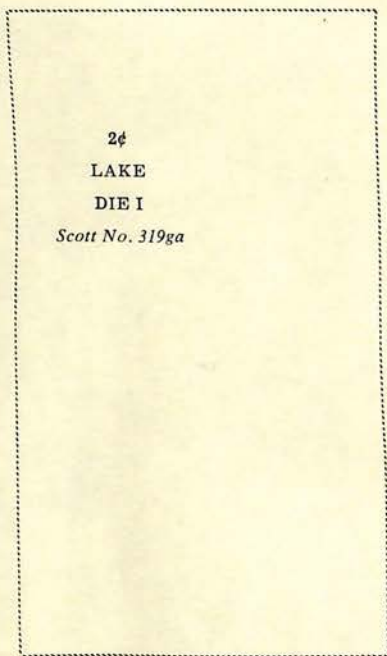
Watermarked USPS

1903

Perforated 12



319 D-P W/PLT. # NH 725
CARMINE ROSE



2¢
LAKE
DIE I
Scott No. 319ga



TUBE 1 SCARLET 319 M/H
GUIDE LINE POSITION
#275

In Five Days return to
PETER KLEIN.
PROBATE CLERK OF KANE COUNTY,
GENEVA, ILLINOIS.

*Bill of Samuel Mauthe,
Secured
- and
deposition of John H. Lee
one of the subscribing
witnesses thereto*

*Reg No. 42
42*

*Mr. A. H. Black, Probate Judge,
Smith Center,
Kansas.*



BOOKLET PANES

Watermarked **USPS**

1908

Perforated 12

SCARLET SHADES

SCARLET TYPE 1



SCARLET \$140 H/H
TYPE 1



ROULETTES

POSTALLY USED w/ P.T. NO.
VERY SCARCE \$350-\$900

ROSE CARMINE 146
STAINED STAPLE HOLES

CARMINE



TYPE 1 SCARLET NH
275-



← GUIDE LINE

TYPE 1 SCARLET
L/H 185

BOOKLET PANES

Watermarked USPS

1903

Perforated 12



MISSING TOP SELVAGE
ROSE CARMINE



3763
319g. w/pt. number CARMINE
w/H HORIZONTAL WMK / REVERSED
TYPE 1 23,000



3763
319g. CARMINE TYPE 1
w/pt. #450
TYPE 1

GUIDE
LINE



TYPE 1 CARMINE ROSE / w/H
319a 5000
CARMINE



CARMINE ROSE / NG 275
TYPE 1 319 n
STAPLE HOLDS / STAINED

TYPE 1

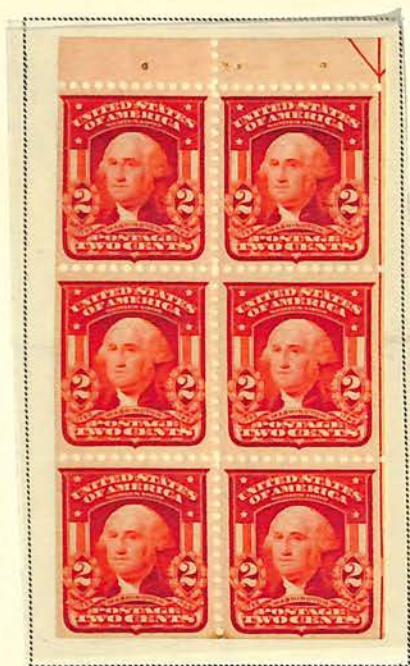
BOOKLET PANES

Watermarked USPS

1908

Perforated 12

TYPE II



319 h Type II CARMINE NH
\$ 6,500



319 Fh Type II used CARMINE
BLUE REGISTERED HANDSTAMP →
VALUE



319 Fq. (H) 300-
TYPE II LAKE

BOOKLET PANES

Watermarked **USPS**

1908

Perforated 12



331a \$165



332a \$100 135
dark carmine

BOOKLET PANES

Watermarked **USPS**

1908

Perforated 12



331a H



BOOKLET PANES

Watermarked USPS

1910

Perforated 12



374a

375



375a H 5170
w/plate number



375a
200

BOOKLET PANES

Watermarked USPS

1912

Perforated 12



405-b / w/plate no. 5100



406/d plate no. 565

BOOKLET PANES

Watermarked USPS

1912

Perforated 12



2¢

CARMINE

Scott No. 406a

BOOKLET PANES

Watermarked USPS

1914

Perforated 10



6695



424d/NH



11777



425e/NH

6363

6369

6364

6363

6869



424d/H

BOOKLET PANES

Unwatermarked
1916
Perforated 10



462a



463a

462a
NH



-45

FIRST FLIGHT INAUGURATING
CONTRACT AIR MAIL
YOUNGSTOWN,
OHIO,
3:00 P. M.
APRIL 21,
1927
CLEVELAND - PITTSBURGH ROUTE



Mr. Riley Hastings
Cherrydale, Virginia.

BOOKLET PANES

Unwatermarked

1917-18

Perforated 11



498e



499e



501b Type I HINGED
\$105-



502b TYPE II / \$120-

498c



499e



501b



502b





Type I
\$1.00+



5026 Type II



BOOKLET PANES

1923

Flat Plate Printing

Perforated 11



NH/ \$19.00



552
NH



554e
NH



IN THE DAY
MAIL EARLY
EISENHOWER-USA
EISENHOWER-USA
EISENHOWER-USA
EISENHOWER-USA

BOOKLET PANES

1926
Rotary Press Printing
Perforated 10



583a NH

1927
Perforated 11 x



(H) COLOR
UNLISTED BRITISH MANUS

5572
NH



6322



634d



BOOKLET PANES

1932

Rotary Press Printing

Perforated 11 x 10½



BOOKLET PANES

1932

Rotary Press Printing

Perforated 11 x 10½



720b 22-50

BOOKLET PANES

1939

Rotary Press Printing

Perforated 11 x 10 1/2



PLT. NO.



2 1/2 MM
OUTTER

3MM
VERTICAL
GUTTERS
w/plate numbers



FREAK
SELVAGE
(MISCUT)

3MM GUTTER



AIR POST BOOKLET PANES

1928

Flat Plate Printing

Perforated 11



C10a/NH 240-120



SUPERB 150-175