

POSTAGE

Unwatermarked

1935

Rotary Press Printing

Perforated 11x10½

Connecticut Tercentenary Issue



California-Pacific Exposition Issue



Flat Plate Printing

Perforated 11

Boulder Dam Issue



Rotary Press Printing

Perforated 11x10½

Michigan Centenary Issue



POSTAGE

Unwatermarked

1936

Rotary Press Printing

Perforated 11x10 $\frac{1}{4}$

Texas Centennial Issue



Perforated 10 $\frac{1}{4}$ x11

Rhode Island Tercentenary Issue



Perforated 11x10 $\frac{1}{4}$

Arkansas Centennial Issue



Oregon Territory Centennial Issue



Susan B. Anthony Commemorative Issue

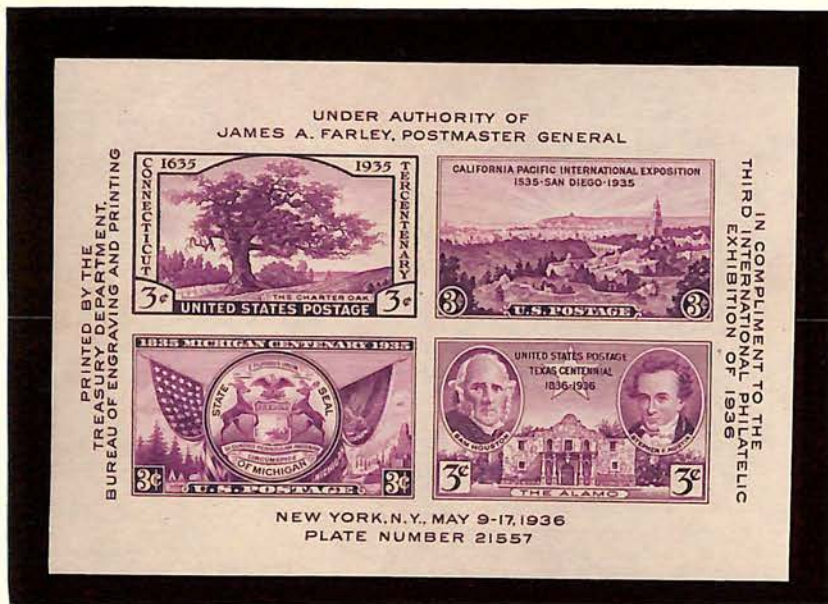


POSTAGE

Third International Philatelic Exhibition Issue

May 9th to 17th, 1936

New York, N. Y.



POSTAGE

Unwatermarked

1936-37

Rotary Press Printing

Perforated 11x10½

Army Commemorative Issue



Navy Commemorative Issue



POSTAGE

Unwatermarked

1937

Flat Plate Printing

Perforated 11

Virginia Dare Commemorative Issue



Rotary Press Printing

Perforated 11x10½

Northwest Territory Issue



Constitution Sesquicentennial Issue



Territorial Issues

Perforated 10½x11, 11x10½

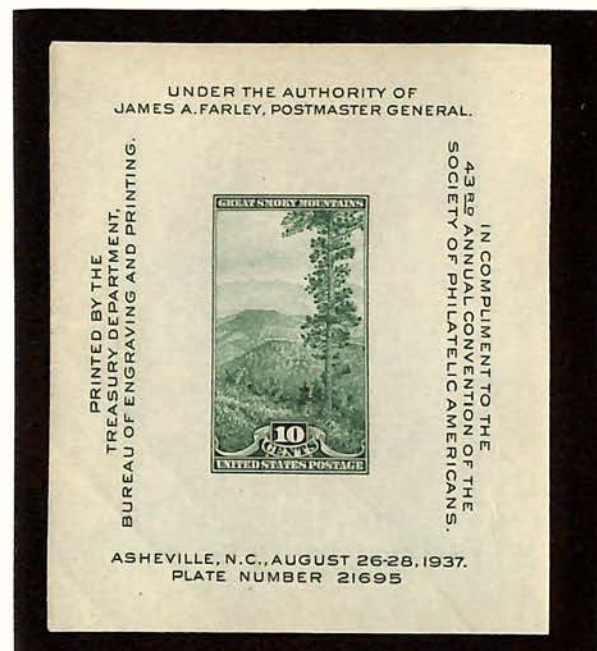


POSTAGE

Society of Philatelic Americans Convention Issue

August 26th to 28th, 1937

Asheville, North Carolina



POSTAGE

Unwatermarked

1938

Rotary Press Printing

Perforated 11x10½



Flat Plate Printing

Perforated 11



537-4
NH

AIR POST STAMPS

1918

Unwatermarked

Perforated 11⁴



1923



1926-27



1927



1928



1930



4.00
1.70

4.00
112.50

AIR POST STAMPS

Unwatermarked
Rotary Press Printing
Perforated $10\frac{1}{4} \times 11$

1931



1932



1933
Flat Plate Printing
Perforated 11

Century of Progress Issue



1934
Rotary Press Printing
Perforated $10\frac{1}{4} \times 11$



1935
Flat Plate Printing
Perforated 11

Trans-Pacific Issue



1937



SPECIAL DELIVERY

Unwatermarked
Perforated 12

1885



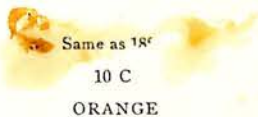
(E1)

1888



(E2)

1893



Same as 1888
10 C
ORANGE

(E3)

1894



(E4)

Watermarked **USPS**

Perforated 12

1895



1908



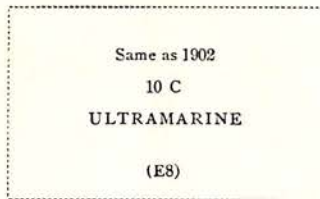
1902



Watermarked **USPS**

Perforated 12

1911

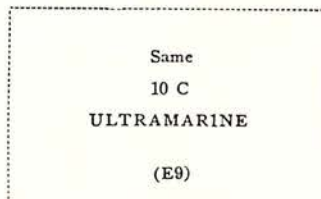


Same as 1902
10 C
ULTRAMARINE

(E8)

Perforated 10

1914



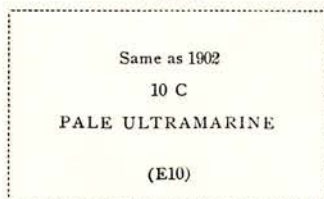
Same
10 C
ULTRAMARINE

(E9)

Unwatermarked

Perforated 10

1916



Same as 1902
10 C
PALE ULTRAMARINE

(E10)

Perforated 11

1917



Perforated 11

1922



1925

Perforated 11



1927

Rotary Press Printing

Perforated 11 x 10 1/2



14 210-
14 65-
26 230-

14 45-
14 45-

14 45-
14 4-
14 2-

6-11

PARCEL POST

1912-13

Watermarked USPS



SPECIAL HANDLING

1925-29

Unwatermarked



11 4.25
11H 12.50
11H 24-

11H 27.50
11H 67.50
+ 40-

+ 27.50

at 3-

304-