

Domestic and Foreign Money Orders by Telegraph and Cable

THE WESTERN UNION TELEGRAPH COMPANY

INCORPORATED

THE LARGEST TELEGRAPHIC SYSTEM IN THE WORLD.

OVER ONE MILLION MILES OF WIRE IN THE UNITED STATES AND CANADA.

It has over 25,000 Telegraph Offices, including Branch Offices.

It has also Direct Connection by Telegraph or Telephone with many more remote and smaller stations, making a total list of 60,000 in the United States, Canada and Mexico, and this number is rapidly increasing.

SEVEN ATLANTIC CABLES

Connecting North America with all points in Europe and beyond, including Two Cables of the American Telegraph and Cable Company, Four Cables of the Anglo-American Telegraph Company, and One Cable of the Direct United States Cable Co.

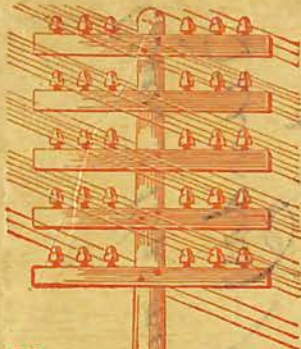
Direct Wires to Galveston, Texas, connecting at that place with the Cables of the Mexican, the Central and South American Telegraph Companies for all points in Mexico and Central and South America.

Direct Wires and Cables to Havana, Cuba, connecting at that place with the Cuba Submarine and West India and Panama Telegraph Companies for all points in the West Indies.

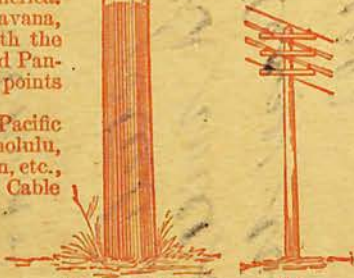
Connects at San Francisco with Pacific Cables to the Sandwich Islands, Honolulu, Guam, the Philippines, China, Japan, etc., and at Victoria, B. C., with Pacific Cable to Australia and New Zealand.

Connects at Seattle, Wash., with U. S. Government Lines and Cables to and in Alaska.

Exclusive connection with the Great North-Western Telegraph Co. of Canada.



THE TWO TELEGRAPH POLES REPRESENT THE RELATIVE SIZE IN NUMBER OF OFFICES OF THE WESTERN UNION AS COMPARED WITH ALL OTHER COMPETING COMPANIES COMBINED



WESTERN UNION TELEGRAPH COMPANY

ALL COMPETING COMPANIES

Domestic and Foreign Money Orders by Telegraph and Cable

SEE OTHER SIDE FOR TELEGRAM

SEE OTHER SIDE FOR TELEGRAM

Handwritten notes:
D. W. M.
D. W. M.
D. W. M.

A delivered telegram from Reginald Vanderbilt
-- one of the 400.... to Charles Dillingham
famous theatrical producer...

POSTAL TELEGRAPH



COMMERCIAL CABLES

CLARENCE H. MACKAY, PRESIDENT.

NIGHT TELEGRAM

The Postal Telegraph-Cable Company (Incorporated) transmits and delivers Night Messages subject to the terms and conditions printed on the back of this blank.

To Mr. *Charles Dillingham*
Newport R.I.
1402 Broadway.
1397
BROADWAY.
WHERE ANY REPLY SHOULD BE SENT.

Can we have *Musicians* for dinner Saturday
Holland House right o'clock if possible would
also like to have them for supper Tuesday
please answer

Reginald Vanderbilt

Gold and Stock Telegraph Co.

MARSHALL LEFFERTS, Pres't.
NORMAN C. MILLER, Sec'y

GENERAL OFFICES, 61 BROADWAY



Form 24.
Commercial News Department,

H. A. Aulmar & Co

Office, *Barrow* *Jan 24th 187*

GOLD & STOCK TELEGRAPH CO., P.R.

For *the* week ending above date, - - - - - Reports, \$ *65* *00*

Received Payment for the Company,

M. Lefferts
Agent.



Blank No. 1.

THE WESTERN UNION TELEGRAPH COMPANY.

This Company TRANSMITS and DELIVERS messages only on conditions, limiting its liability, which have been assented to by the sender of the following message.
Errors can be guarded against only by repeating a message back to the sending station for comparison, and the Company will not hold itself liable for errors or delays in transmission or delivery of **Unrepeated Messages**.
This message is an **UNREPEATED MESSAGE** and is delivered by request of the sender, under the conditions named above.

A. R. BREWER, Sec'y.

45

NORVIN GREEN, President.

Dated Wheatley Rd June 16 1880

Received at New Bedford 246

To Ezra Howland
190 Union St

Shebe Kelber wife

READ THE NOTICE AT THE TOP.

For my

THE POSTAL COMPANY'S SYSTEM REACHES ALL IMPORTANT POINTS IN THE UNITED STATES AND BRITISH AMERICA, AND VIA COMMERCIAL CABLES, TO ALL THE WORLD.

FORM 7.



TELEGRAM

POSTAL TELEGRAPH-CABLE COMPANY.

This Company transmits and delivers messages subject to the terms and conditions printed on the back of this blank.

William H. Baker, V. P. & Gen'l Manager | John O. Stevens, Secretary. | Albert B. Chandler, President.

COUNTER NUMBER	TIME FILED.	CHECK
		M.

Send the following message, without repeating, subject to the terms and conditions printed on the back hereof, which are hereby agreed to.

To Jelly Roll 189
3 eggs beaten well

1 cup sugar
1 heaping teaspoonful
cream tartar 1/2 teaspoon
soda extract lemon
1 cup flour 3 table spoons
hot water on soda



FRANKLIN TELEGRAPH

Send answer to.....



*Mr. C. A. Harrington
Mechanics National Co.*

No. *X*

Charge *X*

*Providence
R.I.*

8
230 +

Duplex Telegraphy, 1871-72, was invented by the president of the Franklin Telegraph Company. Unable to sell his invention to his own company, he found a willing buyer in Western Union. Utilizing this invention, two messages were sent over the wire simultaneously, one in each direction

MORSE'S AMERICAN TELEGRAPH.

New-York, Albany and Buffalo Line.



A. P. Parsons M.D.
Forestville
Chautauq Co
N.Y.

If an answer is required, please send it to this office without delay.

FORM 11.

AMERICAN DISTRICT TELEGRAPH CO.

OFFICES WITH

WESTERN UNION TELEGRAPH CO.

Messengers furnished who will deliver and distribute Invitations, Circulars, Sample Packages, etc., and perform other errands and services. In absence of special contract, charges are based solely on time Messenger is used, during which time Messenger is subject to the direction and control of customer. Telegraph messages collected without charge. Night-watch Signal, Fire Alarm, Police Call and Burglar Alarm Service.

WE DELIVER AND PICK UP WESTERN UNION TELEGRAMS.



Digma Phi Fraternity
112 Central Ave
Ithaca

Western Union Telegram

ST. LOUIS
MAY 19
1879



No. 32

Mrs P. H. Little
Supt. of Asy.

Charges, _____

Western Union

ST. LOUIS
MAY 22
1879



No. _____

Mrs Sherman
Tipton Cedar
Iowa

Charges, _____

No. 11



VIA THE UNITED POST

GOOD SERVICE TO ALL THE WORLD

POST TELL-GRAM



Time

Copyright 1907, by D. W.

Date..... 190

Keep cool! drown all sorrow, do it now and not to morrow; Don't worry if anything goes wrong just run smoothly along. Times are bound to mend and you will be rich in the end.

..POSTERS...Post Tell-gram.. Copyright 1905 by D. W. Elite Mailing Novelty Co. N. Y.

Western Union Telegraph.

6110 J B Pickens
at Pickens Station
No. 50
Charges.....

The Magnetic Telegraph Company,

MORSE LINE,

BETWEEN

New York, Philadelphia, Baltimore and Washington,

Connecting with the Southern, Western, Eastern and Northern Lines of Morse's Telegraphs

TO THE TELEGRAPHING PUBLIC.

Please write plainly; answer quickly; *ran-pax*; use no figures except dates—they cost more; give name, street, and number of the party addressed, to insure prompt delivery; also, your own address under your signature; no charge for address and signature. The above is for your safety as well as our convenience.

OFFICE IN NEW HOPE, Corner of River and Bridge Streets.

- Office in NEW YORK.....No. 5 Hanover Street, and Irving House, Broadway.
- " PHILADELPHIA.....No. 98 Chestnut Street, two doors above Third.
- " WILMINGTON.....Glazier's Building, Corner of Third and Market Streets.
- " BALTIMORE.....Sun Iron Building, Corner of Baltimore and South Streets.
- " WASHINGTON.....National Hotel, Pennsylvania Avenue, Corner of Sixth Street.

BY TELEGRAPH.

Dated *Bethlehem July 20th 1853*

Rec'd, New Hope, *20th* 1853 *11 o'clock, 40 min. A.M.*

To *Rev. J. E. Sweitzer*
Ringwood Church Stockton
Flemington

will be buried
now at

THE MAGNETIC TELEGRAPH COMPANY
Between New York, Philadelphia, Baltimore and Washington.
OFFICE IN NEW HOPE—BRIDGE STREET.

Rev. J. E. Sweitzer
Stockton

WAY STATIONS.—Wilmington, Trenton, New Hope, Havre de Grace, Port Deposit, Princeton, New Brunswick, Newark and Jersey City. This Line connects with the Southern Line to Charleston, Mobile and New Orleans, the Western, Pottsville, Easton, and other Morse Lines.
Approved by Legislature 1852

This by Special
paid here. Report

Stockton
July
OKs.

SEE OTHER SIDE FOR TELEGRAM

The Western Union Telegraph Company

THE LARGEST TELEGRAPHIC SYSTEM IN THE WORLD.
OVER ONE MILLION MILES OF WIRE IN THE UNITED STATES AND CANADA.

It has over 24,000 Telegraph Offices, including Branch Offices.

It has also Direct Connection by Telegraph or Telephone with as many more remote and smaller stations, making a total list of over 50,000 in the United States, Canada and Mexico, and this number is rapidly increasing.

Seven Atlantic Cables,

Connecting North America with all points in Europe and beyond, including Two Cables of the American Telegraph and Cable Company, Four Cables of the Anglo-American Telegraph Company, and One Cable of the Direct United States Cable Co.

Direct Wires to Galveston, Texas, connecting at that place with the Cables of the Mexican, the Central and South American Telegraph Companies for all points in Mexico and Central and South America.

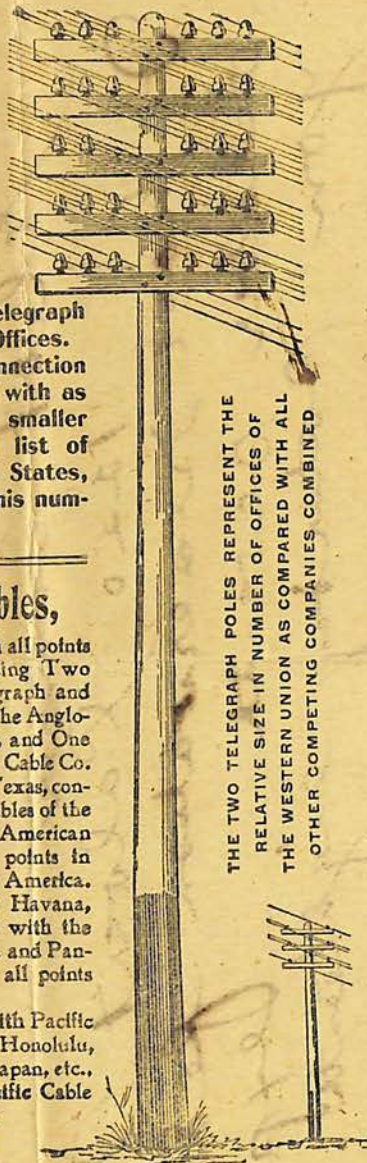
Direct Wires and Cables to Havana, Cuba, connecting at that place with the Cuba Submarine and West India and Panama Telegraph Companies for all points in the West Indies.

Connects at San Francisco with Pacific Cables to the Sandwich Islands, Honolulu, Guam, the Philippines, China, Japan, etc., and at Victoria, B. C., with Pacific Cable to Australia and New Zealand.

Connects at Seattle, Wash., with U. S. Government Lines and Cables to and in Alaska.

Exclusive connection with the Great North-Western Telegraph Co. of Canada.

Domestic and Foreign Money Orders by Telegraph and Cable



THE TWO TELEGRAPH POLES REPRESENT THE RELATIVE SIZE IN NUMBER OF OFFICES OF THE WESTERN UNION AS COMPARED WITH ALL OTHER COMPETING COMPANIES COMBINED

W. U. T. CO.
24,634
OFFICES.

OTHER COS.
4,868
OFFICES

SEE OTHER SIDE FOR TELEGRAM

CLASS OF SERVICE	SYMBOL
Day Message	Blue
Day Letter	Blue
Night Message	Nite
Night Letter	N L

If none of these three symbols appears after the check (number of words) this is a day message. Otherwise its character is indicated by the symbol appearing after the check.

WESTERN UNION



TELEGRAM

NEWCOMB CARLTON, PRESIDENT
 GEORGE W. E. ATKINS, VICE-PRESIDENT
 BELVIDERE BROOKS, VICE-PRESIDENT

CLASS OF SERVICE	SYMBOL
Day Message	Blue
Day Letter	Blue
Night Message	Nite
Night Letter	N L

If none of these three symbols appears after the check (number of words) this is a day message. Otherwise its character is indicated by the symbol appearing after the check.

RECEIVED AT

#12 SA., N., 10

Form No. 168.

THE WESTERN UNION TELEGRAPH COMPANY.

INCORPORATED

21,000 OFFICES IN AMERICA. CABLE SERVICE TO ALL THE WORLD.

This Company TRANSMITS and DELIVERS messages only on conditions limiting its liability, which have been assigned to by the sender of the following message in transmission or delivery of unrepeated messages, beyond the amount of tolls paid by sender, nor in any case where the claim is not presented in writing within sixty days. The message is filed with the Company for transmission, and is delivered by request of the sender, under the conditions named above.

THOS. T. ECKERT, President and General Manager.

RECEIVED VICTOR, COLO.

15D C V 9 Paid

Jimtown Colo July 27th '97

J.J. Ferguson

Gare BoothStore

Can you meet me Colorado Springs tomorrow ? Answer at Alamosa

C. V. Ferguson.

340 PM

THE AMERICAN TELEGRAPH COMPANY. NORTH, SOUTH, EAST AND WEST,

Connecting with all the Southern, Western, Eastern and Northern Lines of Telegraph

Terms and conditions on which Messages are received by this Company for Transmission.

The public are notified that, in order to guard against mistakes in the transmission of messages, every message of importance ought to be repeated by being sent back from the station at which it is to be received to the station from which it is originally sent, and no message will be repeated unless so directed by the sender or receiver.—Half the usual price for transmission will be charged for repeating the message, and while this company will as heretofore use every precaution to ensure correctness, it will not be responsible for mistakes or delays in the transmission or delivery of repeated messages beyond an amount exceeding five hundred times the amount paid for sending the message, nor will it be responsible for mistakes or delays in the transmission of unrepeatable messages from whatever cause they may arise, nor for delays arising from interruptions in the working of its telegraphs, nor for any mistake or omission of any other company over whose lines a message is to be sent to reach the place of destination. All messages will hereafter be received by this company for transmission subject to the above conditions.

CAMBRIDGE LIVINGSTON, Sec'y,
145 BROADWAY, N. Y.

E. S. SANFORD, Pres't,
145 BROADWAY, N. Y.

COMPLAINTS SHOULD BE SENT TO THE SECRETARY.

2, Dated *Orlando May 10th* 1862

Rec'd, 1861, o'clock, min. M

To *Commodore R. F. Stockton*
President. Del & Raritan Canal

*I regret judicial business
prevents my attending meeting
this day*
John M. Bead
10/20pd

THE WESTERN UNION TELEGRAPH COMPANY.

21,000 OFFICES IN AMERICA. INCORPORATED
CABLE SERVICE TO ALL THE WORLD.

This Company TRANSMITS and DELIVERS messages only on conditions of first-class telegrams, which have been assigned to by the sender of the following messages. Errors can be guaranteed against only by repeating a message back to the sending station and the Company will not hold itself liable for errors or delays in transmission or delivery of Unrepeated Messages, beyond the amount of tolls and therefor, nor in any case where the claim is not presented in writing within sixty days after the message is filed with the Company for transmission. This is an UNREPEATED MESSAGE, and is delivered by request of the sender, under the conditions named above.

THOS. T. ECKERT, President and General Manager.

NUMBER

SENT BY

RECD. BY

CHECK

14 Wm Jd 70 called 259

RECEIVED

WILMINGTON

04

July 21 1899

Dated *Wm Jd*

To *John of W. Green Springs*

Form 1204

CLASS OF SERVICE	SYMBOL
Telegram	
Day Letter	Blue
Night Message	Nite
Night Letter	N L

If none of these three symbols appears after the check (number of words) this is a telegram. Otherwise its character is indicated by the symbol appearing after the check.

NEWCOMB CARLTON, PRESIDENT

GEORGE W. E. ATKINS, FIRST VICE-PRESIDENT

WESTERN UNION TELEGRAM

CLASS OF SERVICE	SYMBOL
Telegram	
Day Letter	Blue
Night Message	Nite
Night Letter	N L

If none of these three symbols appears after the check (number of words) this is a telegram. Otherwise its character is indicated by the symbol appearing after the check.

RECEIVED AT 86B 96 FAIRFIELD AVE. (NEAR MAIN ST.), BRIDGEPORT, CONN.

MIDDLEBURY VT 1030A AUG 13 1923

B MARSH

294 FAIRFIELD AVE BRIDGEPORT CONN

WESTERN UNION INTERNATIONAL, INC.

CLASS OF SERVICE
FULL RATE
CABLE LETTER (LT)
PRESS
FULL RATE WILL APPLY UNLESS OTHERWISE INDICATED



CABLEGRAM

E. A. GALLAGHER, PRESIDENT

NO. WEST. CL. OF SVC.	CASH NO.	CHARGE TO THE ACCOUNT OF	TIME FILED

To _____ 19__

Via _____

SENDER MUST SPECIFY ROUTE WRITE "W.U. CABLES" HERE

MARK YOUR CABLES VIA WESTERN UNION TO INSURE FAST ACCURATE WORLD-WIDE SERVICE.

WESTERN UNION

INTERNATIONAL COMMUNICATIONS

CABLEGRAM

W. F. MARSHALL, PRESIDENT

CHECK
ACCOUNTING INFORMATION
TUBE FILED

SENDER MUST SPECIFY ROUTE WRITE "W.U. CABLES" HERE

To _____ 19__

Via _____

MARK YOUR CABLES VIA WESTERN UNION TO INSURE FAST ACCURATE WORLD-WIDE SERVICE.

NEW ENGLAND
TELEPHONE AND TELEGRAPH CO.

RETURN IN FIVE DAYS TO
OFFICE OF MAILING.



POSTAL
TELEGRAPH-CABLE
COMPANY

TELEGRAM

IT WILL HURRY YOUR ANSWER
to give it to the boy who delivers this telegram

Mr Harvey D. Eaton

No. _____

CHARGES PAID

SPECIAL RUSH SERVICE

ALASKA COMMUNICATION SYSTEM
SIGNAL CORPS UNITED STATES ARMY

PENALTY FOR PRIVATE USE TO AVOID
PAYMENT OF POSTAGE, \$300

TELEGRAM

IF NOT DELIVERED RETURN IN 7 DAYS TO

OFFICIAL BUSINESS
DEPT. OF THE ARMY PENALTY MAIL PERMIT
NUMBER 1054
7/56,300,000



FLORISTS' TELEGRAPH DELIVERY ASSOCIATION, Inc.



ROOM 417
2033 PARK AVENUE
DETROIT 26, MICH.

ROOM 417
2033 PARK AVENUE
DETROIT 26, MICH.



SOLDIER'S FLOWER ORDER





Postal Telegraph

SENDER REQUESTS ANSWER

From Nelson 3rd

SEP - 5 1934

750

Form
16

NA36 10

PAY NO CHARGES ON THIS MESSAGE UNLESS SHOWN ON DELIVERY SHEET

LC NELSON EDGE =

180 EGE AVE JERSEY CITY =



Postal Telegraph

THE INTERNATIONAL SYSTEM

750

NA41 9=WT

PAY NO CHARGES ON THIS MESSAGE UNLESS SHOWN ON DELIVERY SHEET

NELSON J EDGE THIRD =

180 EGE AVE JERSEY CITY NJ =

WESTERN UNION TELEGRAM

UNION BLANKS

FOR *Teletax* TRANSMISSION

**WESTERN UNION
TELEGRAM**
1-800 (1-800)
W. A. HARSHALL, President

INTERNALS
1-800-230-2300
1-800-230-2300
1-800-230-2300

The time shown above is for the time to receive a message. Subject to local time in place of destination.
Time of receipt is LOCAL TIME in place of destination.

Class of Service
1-800 (1-800)
1-800 (1-800)
1-800 (1-800)
1-800 (1-800)

ON ANY OCCASION . . .
IT'S WISE TO WIRE!

Smart Travelers Always Telegraph

- To keep in touch with home and office
- To get room reservations
- To get or send money in a hurry

WU 1275 (REV. 11-64)



(see inside)

*Stay-at-home wire to you, see cashiers cage
Money via Western Union at 1-800-855-2300*

United offers jets to more U.S. cities . . . than any other airline

FORM 40.

Design Patent, Dec. 20, 1887.



TELEGRAM

CABLE SERVICE TO ALL PARTS OF THE WORLD.

ANSWER WANTED.

Harry M. Montgomery

No. *65*

Charges.....

THE POSTAL TELEGRAPH SYSTEM REACHES

FROM VANCOUVER, WINNIPEG, OTTAWA, MONTREAL, QUEBEC AND PRINCE EDWARD ISLAND

ON THE

NORTH

TO

CAPE BRETON ISL.
 HALIFAX
 ST. JOHN
 BOSTON
 NEW YORK
 PHILADELPHIA
 WASHINGTON
 NORFOLK
 WILMINGTON
 CHARLESTON

FROM

VICTORIA
 PORTLAND
 SAN FRANCISCO
 LOS ANGELES
 AND ALL

WEST

EAST

PACIFIC
 COAST
 POINTS

ON THE

SOUTH

TO SAN DIEGO, EL PASO,
 NEW ORLEANS, PENSACOLA AND SAVANNAH.

ALL IMPORTANT POINTS IN NORTH AMERICA
 AND (VIA COMMERCIAL CABLES)

ALL PARTS OF THE WORLD

NIGHT MESSAGES AT REDUCED RATES

MONEY TRANSFERRED BY TELEGRAPH

Form 10



TELEGRAM



Frank Diesel
701 No. Halsted St.
City,

No. 250

Charges Pd.

Form 116

TELEGRAPH AND CABLE SERVICE TO ALL THE WORLD.

THE WESTERN UNION TELEGRAPH CO.

INCORPORATED

**FOR QUICK SERVICE,
ANSWER BY BEARER.**

NUMBER

Elizabeth Bidgood

CHARGES

Y. Co. Institute,
Paid.

PAY NO CHARGES TO MESSENGER UNLESS WRITTEN IN INK IN DELIVERY BOOK.

Form 116.

Western Union Telegraph Co.

INCORPORATED

CABLE SERVICE TO ALL PARTS OF THE WORLD.

Pay no Charges to Messenger unless written in Ink in Delivery Book.

127
No.

Charges

Richard Lemhara
Walter Co
59 marks

DAY LETTERS NIGHT LETTERS

CABLES



MONEY ORDERS BY TELEGRAPH



NEW JERSEY BELL TELEPHONE CO.
540 BROAD STREET
NEWARK, N. J.



Boz

*With Frank Essey
Bledy*



AFTER 5 DAYS RETURN TO
NEW YORK TELEPHONE CO.
15 DEY STREET



AFTER 5 DAYS RETURN TO
NEW YORK TELEPHONE CO.
15 DEY STREET
NEW YORK, N. Y.



any unus
e will gladl
in the inte
n justice to
to observe t
t and refrain
ents on you
authorized b

NEW YORK, N. Y.

If not delivered in 5 Days return to
Southern Bell Telephone and Telegraph Co.

Form 816



M...
250
150
100
100

CONNECTIONS WITH ALL NEW ENGLAND LINES



IF NOT CALLED FOR IN 5 DAYS BY

C.M. RUSSELL

WILMINGTON

VERMONT.

RETURN TO

GEO. M. BEMIS

READSBORO, VT.

OWNER AND MANAGER

READSBORO AND WILMINGTON TELEPHONE CO.

THE SOUTHERN TELEGRAPH COMPANIES.

Terms and Conditions which Messages are Received by these Companies for Transmission.

The public are notified that in order to guard against mistakes in the transmission of messages, every message of importance ought to be repeated by being sent back from the station at which it is to be received to the station from which it is originally sent. Half the normal price for transmission will be charged for repeating the message, and while these Companies will as heretofore use every precaution to insure correctness, they will not be responsible for mistakes or delays in the transmission or delivery of repeated messages beyond five hundred times the amount paid for sending the message, nor will they be responsible for mistakes or delays in the transmission of unrepeatd messages, from whatever cause they may arise, nor the delays arising from interruptions in the workings of their telegraphs, nor for any mistakes or omissions of any other Company over whose lines a message is to be sent to reach the place of destination. All messages will hereafter be received by these Companies for transmission subject to the above conditions.

J. R. DOWELL, Genl Supt, Richmond, Va.
W. S. MORRIS, Pres't, Richmond, Va.

Received at _____ 186__ at _____ o'clock, _____ minutes.
By telegraph from _____ Sta _____



U4070
dlie 2 125-225

2
↑

After 5 days, return to
PIONEER TELEPHONE AND TELEGRAPH CO.,
403-415 Culbertson Building,
OKLAHOMA, OKLA.

Western Union Telegraph



*D. Zwiefinger, Esq.,
Leitersburg,
Washⁿ County, Md.*

No. _____

Charges _____

Form 116.

Western Union Telegraph

CABLE SERVICE TO ALL PARTS OF THE WORLD.

Pay no Charges to Messenger unless written in Ink in Delivery Book.



Tula, Ga.

Form 116.

Western Union Telegraph

Pay no Charges to Messenger unless written in Ink in D

No. _____

Charges, _____

*Mrs Mike Craft
Germanville
Ia*



*Derwood
Ia*



Messengers Furnished.
Prompt Attention Guaranteed

DISTRICT MESSENGER SERVICE



*A. C. Hawkins,
Lancaster Mass
Box 100.*

**POSTAL
TELEGRAPH-CABLE
COMPANY**

TELEGRAM



IT WILL HURRY YOU
to give it to the boy who del...



NUMBER

CHARGES

PAID

LANDAUS
1445 S FOURTH AEG
LOUISVILLE KY.

SPECIAL RUSH SERVICE

TRADE MARK

WESTERN UNION TELEGRAM



FOR QUICK SERVICE
ANSWER BY BEARER

FORM 1529
NUMBER
CHARGES PAID

R H SIRCUM CO
MELROSE MASS

PAY NO CHARGES TO MESSENGER UNLESS WRITTEN IN INK ON DELIVERY SHEET

Postal Telegraph-Cable Company

1420 SOUTH PENN SQUARE
PHILADELPHIA, PA.



BUY U. S. SAVINGS
BONDS
ASK YOUR POSTMASTER



Form 1530.

Western Union Telegraph Co.

CABLE SERVICE TO ALL PARTS OF THE WORLD.

PAY NO CHARGES ON THIS MESSAGE.

No. _____

C. Brown

~~PAID.~~ *73¢*

Breconshire

WESTERN UNION TELEGRAPH



FOR QUICK SERVICE
ANSWER BY BEARER

FORM 116
NUMBER <i>2</i>
CHARGES <i>PA</i>

*Mr. Spaulding
Rt. 11
MONTPELIER, IND.*

PAY NO CHARGES TO MESSENGER UNLESS WRITTEN IN INK ON DELIVERY SHEET

FORM 1529-CA

Send

SPECIAL TELEGRAMS

by WESTERN UNION



Appreciated for
DISTINCTIVE
BLANKS AND ENVELOPES

are provided for
BIRTHDAYS • ANNIVERSARIES • WEDDINGS

and for all special occasions celebrated throughout the year

CHRISTMAS • THANKSGIVING • EASTER • MOTHER'S DAY • VALENTINE DAY • FATHER'S DAY • JEWISH NEW YEAR

WESTERN UNION TELEGRAM

BOB MICH

AFTER DUE CONSIDERATION THE
UNITED DRAMA GUILD TAKES GRE

WESTERN UNION



TELEGRAM

FOR QUICK SERVICE
ANSWER BY BEARER

FORM 116
NUMBER <i>7</i>
CHARGES <i>350</i>

C. F. Brick

PAY NO CHARGES TO MESSENGER UNLESS WRITTEN IN INK ON DELIVERY SHEET

We can buy it for you
IN THAT DISTANT CITY



**WESTERN UNION
SHOPPING SERVICE**

You describe it...we will buy it and see that it is delivered
on time. • Selected telegram included with each order.



Love's Telegram

Should there be any doubt as to the accuracy of this telegram

it can be repeated by the sender

on receipt of 20 KISSES

HANDED IN AT Love St

A M



To: My Valentine

All ready - loving heart - to take trip - don't give me the slip - doctor not far - hired Dan Cupid's car - he'll get us there -

Love's Telegram

Should there be any doubt as to the accuracy of this telegram

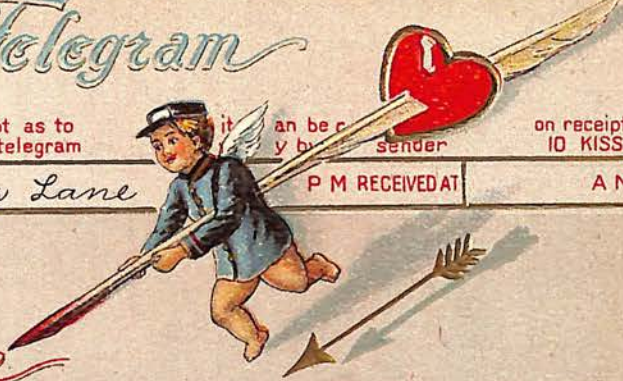
it can be repeated by the sender

on receipt of 10 KISSES

HANDED IN AT Lovers Lane

P M RECEIVED AT

A M



To: My Valentine

Heart getting broke - must put in soak - love-sick cross - you can be boss -

Love's Telegram

Should there be any doubt as to the accuracy of this telegram

it can be repeated verbally by the sender

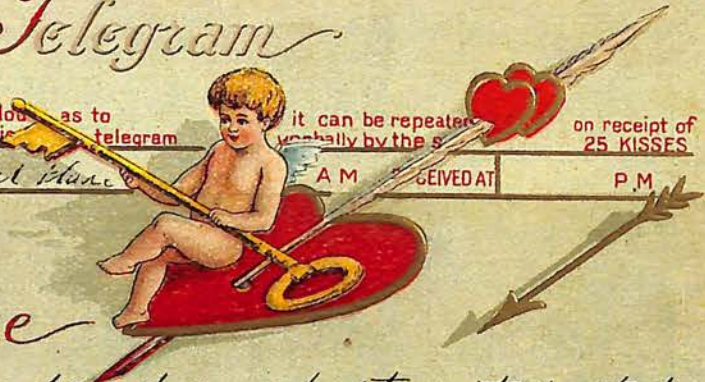
on receipt of 25 KISSES

HANDED IN AT Heart Lane

A M

RECEIVED AT

P.M



To: My Valentine

Baggage ready - apartment rented - Heartsville - nice warm spot - next Dan Cupid's lot - the janitor he's got key - for you and me - answer quick - do you see -

Valentine Greetings



I'm Sending to You
A Large Warm Heart,
It's Getting lonesome
And Needs Company,
Now Can You
Find Room And
Link it With Yours?
So I Can Call You
My happy?

HERE'S A HURRY UP MESSAGE FOR YOU!

Herman Gidd
is waiting for you
goat-by



Form 116.

Western Union Telegraph Co.

Office Union Block

Pay no Charges to Messenger unless written in Ink in Delivery Book.

No.

R. Fairbank
City

Charges,

ARD CO., N. Y.

FORM 5.

THE POSTAL COMPANY'S SYSTEM REACHES ALL IMPORTANT POINTS IN THE UNITED STATES AND BRITISH AMERICA, AND via COMMERCIAL CABLES, TO ALL THE WORLD.



TELEGRAM

POSTAL TELEGRAPH-CABLE COMPANY.

This Company transmits and delivers messages subject to the terms and conditions printed on the back of this blank.
JOHN O. STEVENS, Secretary. ALBERT B. CHANDLER, President and General Manager.

COUNTER NUMBER.	TIME FILED.	CHECK
		M.

Send the following message, without repeating, subject to the terms and conditions printed on the back hereof, which are hereby agreed to.

To Rev. Warner Ward
1099 Middlesex Street Lowell Mass
Whitney's say preach Ellenville Sunday they feel confident
Crittenton leaves next week, Telegraph me.
D. W. Eamoné

NEWBURGH, N. Y. Oct. 5 1891



TELEGRAM

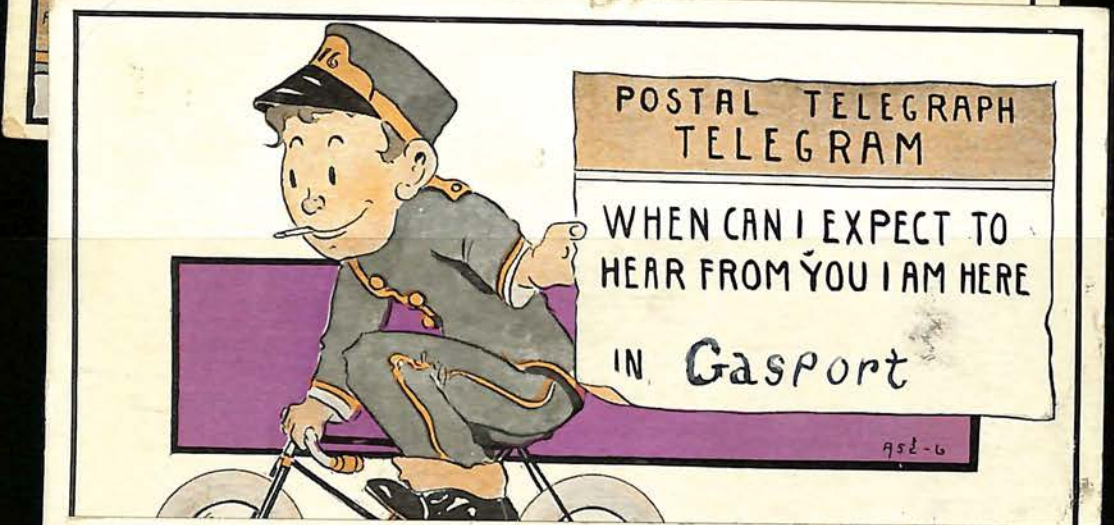
Concord Mass
Stambridge Mass
15
Beaver Street
RECEIVED BY
15.00 TIME
Lennon
Bldg
Boston





POSTAL TELEGRAPH
TELEGRAM

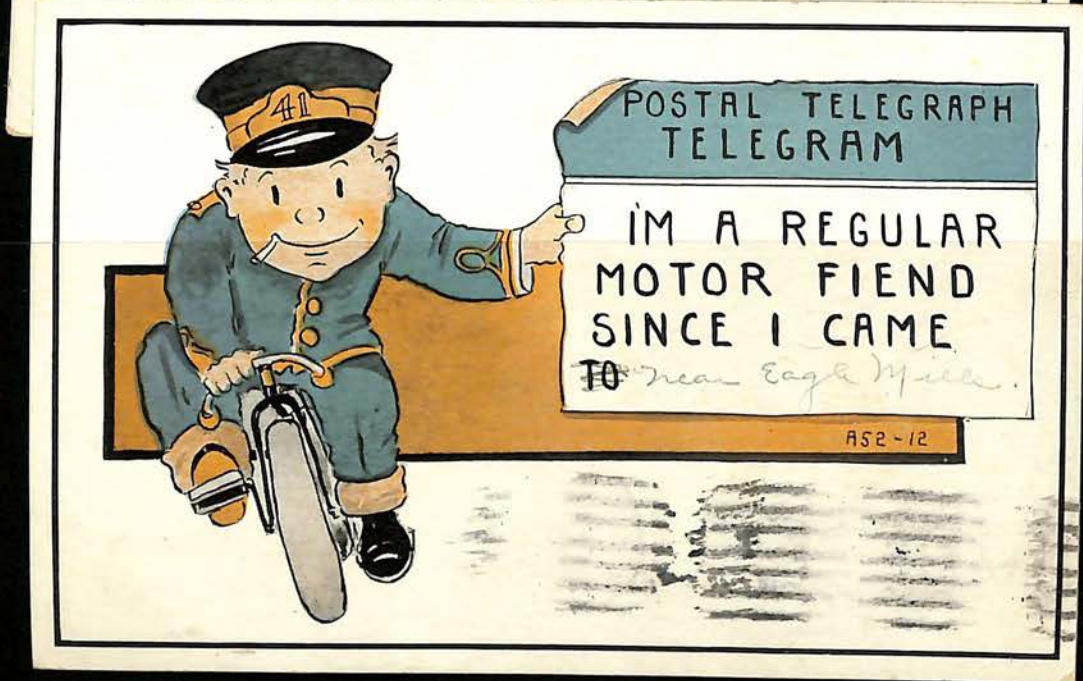
THERE LOTS OF LIVE
WIRES BUT THEY DON'T
SHOCK
IN



POSTAL TELEGRAPH
TELEGRAM

WHEN CAN I EXPECT TO
HEAR FROM YOU I AM HERE
IN Gasport

952-6



POSTAL TELEGRAPH
TELEGRAM

I'M A REGULAR
MOTOR FIEND
SINCE I CAME
TO near Eagle Mills

952-12



POSTAL TELEGRAPH
TELEGRAM

I MISS YOU DEARIE
AND WISH THAT
YOU WERE HERE

IN

A52-2



POSTAL TELEGRAPH
TELEGRAM

I AM COMING
HOME BAG
AND BAGGAGE

FROM *W. W. W. W.*

A52-4



POSTAL TELEGRAPH
TELEGRAM

I SEND YOU THIS MESSAGE
JUST TO LET YOU KNOW
THAT I STILL THINK OF YOU

IN

A52-8



TELEGRAM

IT WILL HURRY YOUR ANSWER
to give it to the boy who delivers this telegram



SPARTANBURG SC

301 CONNECTICUT AVE

ANNA BROCK SMITH

CHARGE PAID

FORM 40.
765.



FORM 40.
26323.



TELEGR



Mr. Marshall P. Scher...

WESTERN UNION TELEGRAM

277-137

Read

The sender requests an answer

POSTAL TELEGRAPH-CABLE COMPANY

NIGHT LETTERGRAM



The Postal Telegraph-Cable Company (Incorporated) transmits and delivers this night lettergram subject to the terms and conditions printed on the back of this blank.

CLARENCE H. MACKAY, PRESIDENT.

RECEIVED AT

COR. WEBSTER & GOUNDRY STS.
NORTH TONAWANDA, N. Y.

DELIVERY NO.

INDEPENDENT COMPETITIVE PROGRESSIVE

4-8029

ll bu ra 15 NL
San Antonio Tex Dec 24 1917
Mrs Wm P Clapham
190 Christiana St.

A Merry Merry Xmas and Happy New Year to all
will write tonight
Lt. Wm P. Clapham

POSTAL TELEGRAPH-CABLE COMPANY

NIGHT LETTERGRAM



Mrs Wm P Clapham
190 Christiana St

No. _____

CHARGES _____

INDEPENDENT COMPETITIVE PROGRESSIVE

POSTAL TELEGRAPH COMMERCIAL CABLES

CLASS OF SERVICE DESIRED	
FAST TELEGRAM	
DAY LETTER	
NIGHT TELEGRAM	
NIGHT LETTER	

The sender must mark on it opposite the class of service desired, otherwise the telegram will be transmitted as a fast telegram.

CLARENCE H. MACKAY, PRESIDENT.

TELEGRAM

TELEGRAMS
TO ALL
AMERICA



CABLEGRAMS
TO ALL THE
WORLD

RECEIVER'S NUMBER _____

CHECK _____

TIME FILED _____

STANDARD TIME _____

TELEGRAPH SERVICE

Fast Day Message
Day Letter

Night Messages

are cheaper than

CABLE SERVICE

Preferred
Ordinary

FORM 43.



DISTRICT MESSENGER SERVICE

POSTAL TELEGRAPH-CABLE COMPANY

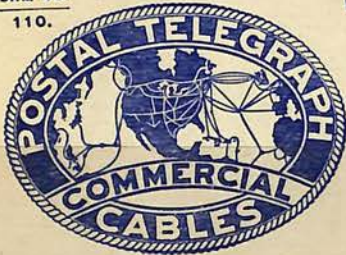


Messengers Furnished.
Prompt Attention Guaranteed.



CP

FORM 40.
110.



TELEGRAM

Sat. Feb. 23, 1904

**IT WILL HURRY YOUR ANSWER
to give it to the boy who
delivers this telegram.**

No.

CHARGES

POSTAL TELEGRAPH



COMMERCIAL CABLES

CLARENCE H. MACKAY, PRESIDENT.

TELEGRAM

The Postal Telegraph-Cable Company (Incorporated) transmits and delivers this message subject to the terms and conditions printed on the back of this blank.

COUNTER NUMBER, TIME FILED, CHECK, M. Send the following message, without repeating, subject to the terms and conditions printed on the back hereof, which are hereby agreed to.



To my dearest:-

Oh I am so mad at you.

POSTAL TELEGRAPH



COMMERCIAL CABLES

CLARENCE H. MACKAY, PRESIDENT.

TELEGRAM

The Postal Telegraph-Cable Company (Incorporated) transmits and delivers this message subject to the terms and conditions printed on the back of this blank.

COUNTER NUMBER, TIME FILED, CHECK, M. Send the following message, without repeating, subject to the terms and conditions printed on the back hereof, which are hereby agreed to.



To my dear one:-

I am on the jump for home.

POSTAL TELEGRAPH



COMMERCIAL CABLES

CLARENCE H. MACKAY, PRESIDENT.

TELEGRAM

The Postal Telegraph-Cable Company (Incorporated) transmits and delivers this message subject to the terms and conditions printed on the back of this blank.

COUNTER NUMBER, TIME FILED, CHECK, M. Send the following message, without repeating, subject to the terms and conditions printed on the back hereof, which are hereby agreed to.



To my darling:-

Expect me by:

Saturday or Sunday

TELEGRAPH POST-CARD



No 18 Time Sent Saturday May 11th 1907

Delayed here Will
But coming soon I guess
don't worry
yours as B4

POSTAL TELEGRAPH COMMERCIAL CABLES



CLARENCE H. MACKAY, PRESIDENT.

TELEGRAM

REGISTERED TRADE-MARK. DESIGN PATENT NO. 36289.

The Postal Telegraph-Cable Company (Incorporated) transmits and delivers this message subject to the terms and conditions printed on the back of this blank.

COUNTER NUMBER. TIME FILED. CHECK. M.

Send the following message, without repeating, subject to the terms and conditions printed on the back hereof, which are hereby agreed to.



To my dear
I miss each other

POSTAL TELEGRAPH COMMERCIAL CABLES



CLARENCE H. MACKAY, PRESIDENT.

TELEGRAM

REGISTERED TRADE-MARK. DESIGN PATENT NO. 36289.

The Postal Telegraph-Cable Company (Incorporated) transmits and delivers this message subject to the terms and conditions printed on the back of this blank.

COUNTER NUMBER. TIME FILED. CHECK. M.

Send the following message, without repeating, subject to the terms and conditions printed on the back hereof, which are hereby agreed to.



To

WESTERN UNION TELEGRAM

TELEPHONE

U.S. APPOINTED TELEGRAPH OFFICE
4th & G STREETS (TEL. 2342)
CAMP CARSON, COLORADO

WESTERN UNION TELEGRAM

FORM 116-O

NUMBER <i>97</i>
CHARGES <i>PA</i>

FOR QUICK SERVICE ANSWER BY BEARER

PAY NO CHARGES TO MESSENGER UNLESS WRITTEN IN INK ON DELIVERY SHEET

WESTERN UNION TELEGRAM

FORM 116

NUMBER
CHARGES

FOR QUICK SERVICE ANSWER BY BEARER

*Mrs. E. A. Hines
Janoville
M.A.*

PAY NO CHARGES TO MESSENGER UNLESS SHOWN ON DELIVERY SHEET



PATS. PENDING

FAST DAY MESSAGES

DAY LETTERS - NIGHT LETTERS

MONEY TRANSFERRED BY TELEGRAPH

REV. 6-16-1922. OUTGOING ENVELOPE USE, 1/2" X 3 1/2", TOWER 2122, CHICAGO.

WESTERN UNION

TELEGRAM

FORM 116-O

NUMBER 79
CHARGES R

FOR QUICK SERVICE ANSWER BY BEARER

PAY NO CHARGES TO MESSENGER UNLESS WRITTEN IN INK ON DELIVERY SHEET

WESTERN UNION TELEGRAM

FOR
RESERVATIONS
TELEGRAPH
... AND BE
SURE!

FOR
KEEPSAKE
REMEMBRANCES
TELEGRAPH
YOUR
GREETINGS



Telegraphic Gift Money Orders • Perfect for all Gift Occasions

WESTERN UNION TELEGRAM

501
12, 18

TELEGRAPH
Easter Greetings
 25¢ TO ANY WESTERN UNION POINT IN THE UNITED STATES
 20¢ **LOCALLY**

New Business!
get your share
 by **TELEGRAPH**

WESTERN UNION
Wire more
WORRY LESS

YES SIR I GOT YOUR TELEGRAM

Play safe! TELEGRAPH
FOR RESERVATIONS
HOTEL, PULLMAN, THEATRE

Ask
WESTERN UNION
-they know!

REPLENISHING STOCKS
 Ordering goods by wire reduces investment in stock, gives quicker turnover, keeps customers satisfied with fresh modern items.

TELEGRAPH!

Send
THANKSGIVING
Greetings by
WESTERN UNION
 25¢ and 35¢ TO ANY WESTERN UNION POINT IN U. S.
 20¢ *locally*

TELEGRAPH!

Send
THANKSGIVING
Greetings by
WESTERN UNION
 25¢ and 35¢ TO ANY WESTERN UNION POINT IN U. S.
 20¢ *locally*

this check is not paid for any reason,
 telegraph us by **WESTERN UNION collect**

TELEGRAMS

TO SEND A TELEGRAM
USE THE SPECIAL WESTERN UNION COIN BOOTH IN LOBBY
 Immediate direct connection with WESTERN UNION. No extra cost. Simply dictate message and deposit telegraph tolls.
 ... OR TELEGRAMS WILL BE ACCEPTED BY THE HOTEL CLERK

This wire flashed over
WESTERN UNION'S
HIGH-SPEED
ELECTRONIC TELEGRAPH
SYSTEM

ONLY  **MINUTES**
IN TRANSIT

This is
FRIDAY
TELEGRAPH

YOU CAN STILL
GET IT DONE
THIS WEEK
IF YOU...

QUANTITY DISCOUNTS

RANGING FROM 10% TO 80%
ON LOCAL NIGHT LETTERS OF SAME TEXT

Rates for	No. of Messages	Rate Per Message	Maximum Total Charge
Night Letters	25-50	18c	\$ 8.67
	51-100	17	16.15
	101-250	16	37.65
	251-500	15	67.64
	501-1000	13½	120.12
	1001-2000	12	200.10
of 50 words	Over 2000	10	

COSTS AS LOW AS 4 CENTS A



SAVE TIME by having the CORRECT TIME

CONFIRMING
THIS ORDER by
TELEGRAPH
WILL BUILD
GOODWILL
and HOLD BUSINESS


CONDITIONS CHANGE SWIFTLY--
TELEGRAPH Now!

CABLE EARLY!

Trade with Europe before lunch time
over our 10 high speed cables

Answers can be had
same day on messages filed before
noon--the closing time in Europe

Tomorrow is a Holiday
CLEAR YOUR
CORRESPONDENCE
by TELEGRAPH TODAY

DON'T WAIT

TELEGRAPH!

FORM 6248(50)

Today is MONDAY **TUESDAY** **WEDNESDAY** **THURSDAY** **FRIDAY** **SATURDAY**

WESTERN UNION
FOR A FLYING START AND TO CLEAN UP THE WEEK-END ACCUMULATION...
TELEGRAPH

WESTERN UNION
IS ALREADY MAKE EVERY DAY
TELEGRAPH

WESTERN UNION
L GET IT DONE
TELEGRAPH

WESTERN UNION
NO MISUNDERSTANDINGS
... WHEN YOU HAVE A
RECORD OF IT
Telegraph It AND BE SURE

Here's News!
WESTERN UNION
BON VOYAGE
TELEGRAMS
now as low as **25¢**
LOCAL RATE 20¢
Traveling or for pleasure send
WESTERN UNION
TELEGRAMS
for 15 words
ANYWHERE


When you go abroad...
CABLE YOUR SAFE ARRIVAL
in Great Britain
75¢
TO NEW YORK
\$1.00
TO OTHER POINTS IN U.S.

TELEGRAMS
SAVE MONEY
... BY NOT
WASTING WORDS

He who writes
MUST WAIT
TELEGRAPH
FOR QUICK ACTION

To send a TELEGRAM
 telephone it to
 Western Union from
 home or office or
 from any coin box
 telephone



TELEGRAMS COST VERY LITTLE

TRUST
 those vital facts,
 figures, fractions,
 to the YELLOW
 BLANK

WESTERN UNION

TELEGRAPH and be sure

Easter
 Telegrams
 20¢ locally
 25¢ TO DISTANT POINTS



WESTERN UNION'S
New NIGHT
 LETTER

25 WORDS FOR FORMER PRICE OF 10
 200 WORDS TO NEARBY POINTS Only 59¢

Send a
 TELEGRAPHIC REPLY
 via Western Union

Western Union Telegrams are
 economical, can be carefully
 worded and leave no room
 for misunderstanding.

BUSINESS WILL NOT
 WAIT

SPEED-UP
 by
 TELEGRAPH

THIS WIRE
 ONLY
 MINUTES
 IN TRANSIT

6297(55)

FOR FAST
 ROUND TRIP
 SERVICE

ANSWER
 PROMPTLY

This is
 MONDAY

WESTERN UNION
 FOR A FLYING START
 AND TO CLEAR UP
 WEEK-END CORRESPONDENCE - FAST...

TELEGRAPH

Send or get "cash
 in a flash"
 by Telegraphic
 MONEY ORDER



6292(54)

Put WORDS to work


25 WORDS TO NEARBY POINTS ONLY 24¢
 COAST TO COAST ONLY 50¢
 200 WORDS TO NEARBY POINTS ONLY 59¢

New WESTERN UNION'S
 NIGHT LETTER

WESTERN UNION
 Gift Orders

COMBINE SENSE and SENTIMENT
 \$10 or less..only 50 cents
 TO ANY WESTERN UNION POINT IN U.S.
 Including HOLIDAY Telegram

ION
 ers
 TIMENT
 cents
 IT IN U.S.
 egram



I'LL DO YOUR
 CHRISTMAS SHOPPING
 FOR YOU... AND DELIVER
 YOUR GIFT..ON TIME ANYWHERE

WESTERN UNION
 SHOPPING SERVICE



I'LL DO YOUR
 CHRISTMAS SHOPPING
 FOR YOU... AND DELIVER
 YOUR GIFT..ON TIME

WESTERN UNION
 SHOPPING SERVICE



I'LL DO YOUR
 CHRISTMAS SHOPPING
 FOR YOU... AND DELIVER
 YOUR GIFT..ON TIME ANYWHERE

WESTERN UNION
 SHOPPING SERVICE



NEW
 WESTERN UNION
 SHOPPING SERVICE

GIFT AND OTHER PURCHASES
 MADE FOR YOU BY WESTERN UNION
 AND DELIVERED ANYWHERE IN U.S.

Convenient - Dependable - Fast



to send a PACKAGE
 by RAILWAY or
 AIR EXPRESS

Call a
 WESTERN UNION MESSENGER

NO EXTRA CHARGE for this SERVICE

THE SENDER HAS A
 CT Telefax CONNECTION
 with WESTERN UNION

WHEN TELEGRAPHING REPLY
 THE SYMBOL FAX IN PLACE OF
 STREET ADDRESS

6209



Gifts mean more when delivered by messenger

CALL WESTERN UNION FOR MESSENGERS TO deliver GIFTS or RUN ERRANDS



CIRCULARS AND SAMPLES DISTRIBUTED

by smartly uniformed MESSENGERS LOCAL AND NATIONWIDE SERVICE



SAVE TIME AND MONEY---
HAVE UNIFORMED MESSENGERS PERFORM YOUR ERRANDS---
WESTERN UNION MESSENGER SERVICE



USE WESTERN UNION MESSENGER SERVICE

FOR *Impressive* DELIVERY OF SALES MESSAGES ON DISTINCTIVE BLANKS

to ship by

RAILWAY EXPRESS RAIL OR AIR SERVICE

CALL A WESTERN UNION MESSENGER OR LEAVE PACKAGE AT WESTERN UNION OFFICE

NO CHARGE FOR THIS WESTERN UNION SERVICE

"If you want a boy call **WESTERN UNION**"

Messengers available to deliver notes, packages... and errands of all kinds

EASIER TO SPEND THAN A CHECK!

AMERICAN EXPRESS Travelers Cheques

SOLD AT WESTERN UNION OFFICES

Spendable anywhere
Refunded if lost...
Costs 75¢ per \$100




Childhood's Newest THRILL

25¢ anywhere
20¢ locally

THE WESTERN UNION KIDDIEGRAM

TRADE MARK

GAY - BRILLIANT - DESIGNED EXPRESSLY FOR YOUNGSTERS

TEL TELEGRAPH YOUR VA VALENTINE

By Greetings

by WESTERN UNION

25¢ anywhere
20¢ locally




BOY!

for PROMPT, DEPENDABLE MESSENGER ERRAND SERVICE

Call WESTERN UNION

GOOD BUSINESS-GOOD WILL

SAY "Thank You" FOR THIS ORDER by TELEGRAPH

6234 (51)



Say **HAPPY BIRTHDAY** By Wire!

6184 (51)