

# UNITED STATES

## AIR POST STAMPS

1926-27



NH  
SOT

1927

LINDBERGH FLIGHT



NH

1928



NH

# UNITED STATES

## AIR POST STAMPS

1930-34



1933

CENTURY OF PROGRESS



1935-37

TRANS-PACIFIC



# UNITED STATES

## AIR POST STAMPS

1938



1939

TRANS-ATLANTIC



1941-44



# UNITED STATES

1857-61

Perforated 15



TYPE I

BENJAMIN FRANKLIN



TYPE IA



TYPE II



TYPE III



TYPE IIIA



TYPE IV



TYPE I

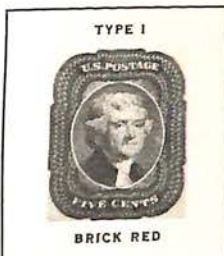
GEORGE WASHINGTON



TYPE II



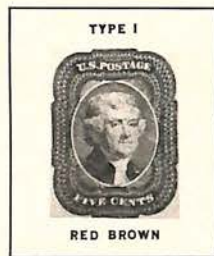
TYPE IIIA



TYPE I

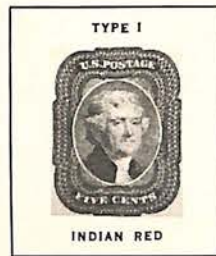
BRICK RED

THOMAS JEFFERSON



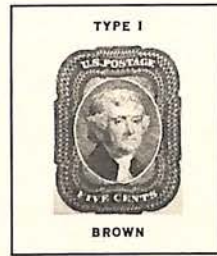
TYPE I

RED BROWN



TYPE I

INDIAN RED



TYPE I

BROWN

# UNITED STATES

1887-88



BENJAMIN FRANKLIN



GEORGE WASHINGTON



GEORGE WASHINGTON



ANDREW JACKSON

NH



JAMES ABRAM GARFIELD



ALEXANDER HAMILTON



OLIVER HAZARD PERRY

# UNITED STATES

1890-93



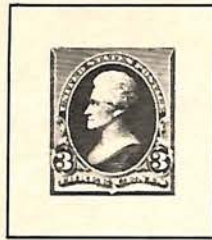
BENJAMIN FRANKLIN



GEORGE WASHINGTON



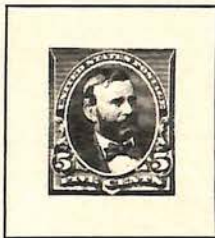
CARMINE  
GEORGE WASHINGTON



ANDREW JOHNSON



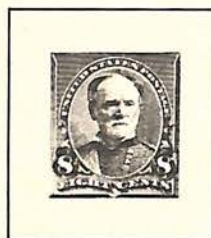
ABRAHAM LINCOLN



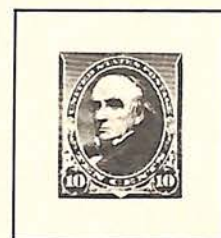
ULYSSES SIMPSON GRANT



JAMES ABRAHAM GARFIELD



WILLIAM T. SHERMAN



DANIEL WEBSTER



HENRY CLAY



THOMAS JEFFERSON



OLIVER HAZARD PERRY

DOUBLE  
TRANSFER

# UNITED STATES

1893

## COLUMBIAN EXPOSITION



"COLUMBUS IN SIGHT OF LAND"  
BY W. H. POWELL



"LANDING OF COLUMBUS"  
BY VANDERLYN



"BROKEN HAT" VARIETY  
"LANDING OF COLUMBUS"  
BY VANDERLYN



"SANTA MARIA", FLAGSHIP OF COLUMBUS



FLEET OF COLUMBUS



"COLUMBUS SOLICITING AID"  
BY BROZIK



"COLUMBUS AT BARCELONA"



"COLUMBUS RESTORED TO FAVOUR"  
BY FRANCISCO JOVER



"COLUMBUS PRESENTING NATIVES"  
BY LUIGI GRESORI



"COLUMBUS ANNOUNCING HIS DISCOVERY"  
BY R. BALACA

571

# UNITED STATES

1893

COLUMBIAN EXPOSITION



"COLUMBUS AT LA RABIDA" BY R. MASO



"RECALL OF COLUMBUS" BY A. G. HEATON



"ISABELLA PLEDGING HER JEWELS"  
BY MUNOZ DEGRAIN



"COLUMBUS IN CHAINS" BY LUETZE



"COLUMBUS DESCRIBING THIRD VOYAGE"  
BY FRANCISCO JOVER



QUEEN ISABELLA & COLUMBUS



CHRISTOPHER COLUMBUS



# UNITED STATES

1898

TRANSMISSISSIPPI EXPOSITION



"MARQUETTE" BY LAMBRECHT



FARMING IN THE WEST

NH



INDIAN HUNTING BUFFALO



FREMONT ON THE ROCKY MOUNTAINS



"TROOPS GUARDING TRAIN" BY REMINGTON



HARDSHIPS OF IMMIGRATION



"MINING PROSPECTOR" BY REMINGTON



"CATTLE IN A STORM" BY J. MACWHIRTER



MISSISSIPPI RIVER BRIDGE AT ST. LOUIS

# UNITED STATES

1901

PAN-AMERICAN EXPOSITION



LAKE STEAMER, "S.S. CITY OF ALPENA"



EMPIRE STATE EXPRESS



ELECTRIC AUTOMOBILE



BRIDGE AT NIAGARA FALLS



SAULT STE. MARIE CANAL LOCKS



OCEAN STEAMER, "S.S. ST. PAUL"

# UNITED STATES

1929

ELECTRIC LIGHT'S GOLDEN JUBILEE

Flat Plate Printing



NH

Rotary Press Printing



NH

Rotary Press Printing



NH

1929

BATTLE OF FALLEN TIMBERS



GENERAL ANTHONY WAYNE

NH

OHIO RIVER CANALIZATION



LOCK "5" MONOGAHELA RIVER

1930

MASSACHUSETTS BAY COLONY



SEAL OF COLONY

NH

1930

CAROLINA-CHARLESTON



JOSEPH WEST & SHADDO

NH

BRADDOCK'S FIELD



COL. G. WASHINGTON

NH

VON STEUBEN



NH

1931

PULASKI



YORKTOWN



NH

RED CROSS



NH

# UNITED STATES

1932

WASHINGTON BICENTENNIAL



AT AGE 45  
BY CHARLES W. PEALE



AT AGE 53  
BY JEAN A. HOUDON



AT AGE 40  
BY CHARLES W. PEALE



AT AGE 64  
BY GILBERT STUART



AT AGE 46  
BY CHARLES W. PEALE



AT AGE 49  
BY CHARLES P. POLK



AT AGE 63  
BY CHARLES W. PEALE



AT AGE 60  
BY JOHN TRUMBULL



AT AGE 48  
BY JOHN TRUMBULL



AT AGE 66  
BY CHARLES SAINT MEMIN



AT AGE 62  
BY W. WILLIAMS



AT AGE 63  
BY GILBERT STUART

# UNITED STATES

1932

## OLYMPIC GAMES



RUNNER AT STARTING MARK



SKI JUMPER



DISCUS THROWER

## ARBOR DAY



TREE PLANTING

## WILLIAM PENN



AT AGE 22

## DANIEL WEBSTER



BY DANIEL CHESTER FRENCH

1933

## PEACE SESQUICENTENNIAL



HASBROUCK HALL

## N.T.L. RECOVERY ADMINISTRATION



"MARCHING FORWARD"

## BYRD ANTARCTIC EXPEDITION

Perforated 11

## GEORGIA BICENTENNIAL



JAMES EDWARD OGLETHORPE



## THADEUSZ KOSCIUSZKO



STATUE BY ANTON POPIEL

# UNITED STATES

1933

CENTURY OF PROGRESS  
AMERICAN PHILATELIC SOCIETY

Perforated 10½x11



Souvenir Sheet



"FORT DEARBORNE" BY DWIGHT BENTON

# UNITED STATES

1933

CENTURY OF PROGRESS

AMERICAN PHILATELIC SOCIETY

Perforated 10½x11



Souvenir Sheet



FEDERAL BUILDING

20-

# UNITED STATES

1934

NATIONAL STAMP EXHIBITION

Souvenir Sheet



## MARYLAND TERCENTENARY



"THE ARK & THE DOVE"

## MOTHERS OF AMERICA



"ARRANGEMENT IN GREY & BLACK" BY JAMES McNEILL WHISTLER



## WISCONSIN TERCENTENARY



"NICOLET AT GREEN BAY" BY E. W. DEMING



# UNITED STATES

1934

NATIONAL PARKS ISSUE

Perforated 11



EL CAPITAN, YOSEMITE



OLD FAITHFUL, YELLOWSTONE



GRAND CANYON



MT. RAINIER & MIRROR LAKE



CLIFF PALACE, MESA VERDE



CRATER LAKE



GREAT HEAD, ACADIA



MT. ROCKWELL & TWO MEDICINE LAKE



GREAT WHITE THRONE, ZION



GREAT SMOKY MOUNTAINS

15-

# UNITED STATES

1934

AMERICAN PHILATELIC SOCIETY

Souvenir Sheet



TRANS-MISSISSIPPI PHILATELIC EXHIBITION

Souvenir Sheet



# UNITED STATES

1935

Special Printing

Imperforate: Ungummed



# UNITED STATES

1935

Special Printing

Ungummed

Imperforate



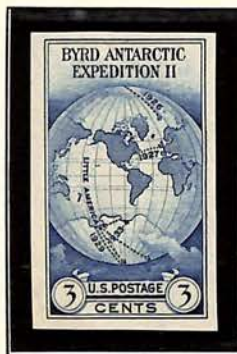
Imperforate



Perforated 10½x11



Perforated 11



Imperforate



# UNITED STATES

1935  
Special Printing  
Ungummed

Perforated Line Pair



Perforated Gutter Pair



Imperforate Gutter Pairs



# UNITED STATES

1935

Special Printing

Ungummed

Imperforate Gutter Pair



Imperforate Gutter Pair



Perforated Line Pair



Imperforate Gutter Pair



Perforated Gutter Pair



Imperforate Gutter Pair



Imperforate Gutter Pair



# UNITED STATES

1935

CONNECTICUT TRICENTENARY



CALIFORNIA-PACIFIC EXPOSITION



MICHIGAN CENTENARY



1935

BOULDER DAM



1936

SUSAN B. ANTHONY



1936

RHODE ISLAND



TEXAS CENTENNIAL



1936

ARKANSAS CENTENNIAL



OREGON TERRITORY CENTENNIAL

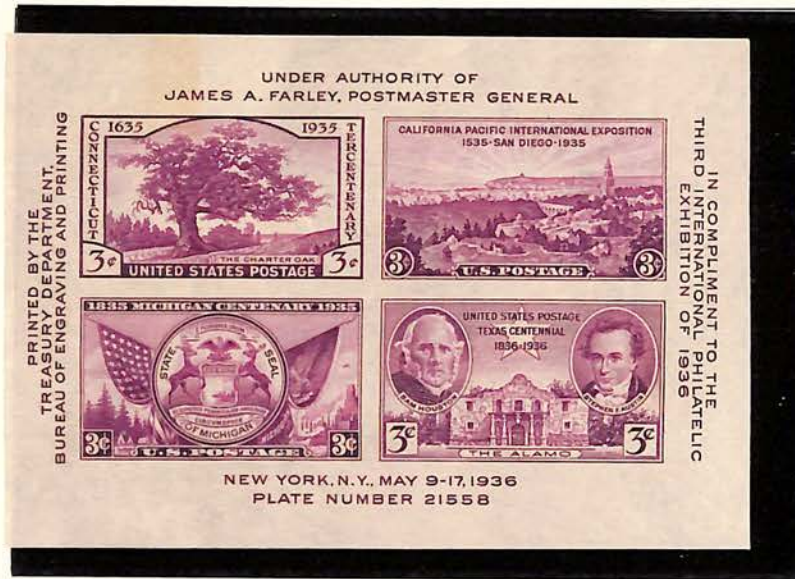


# UNITED STATES

1936

THIRD INTERNATIONAL PHILATELIC EXHIBITION

Souvenir Sheet





# UNITED STATES

1936-37

ARMY ISSUE



NAVY ISSUE



# UNITED STATES

1937

NORTHWEST ORDINANCE



MENASAH CUTLER & RUFUS PUTNAM

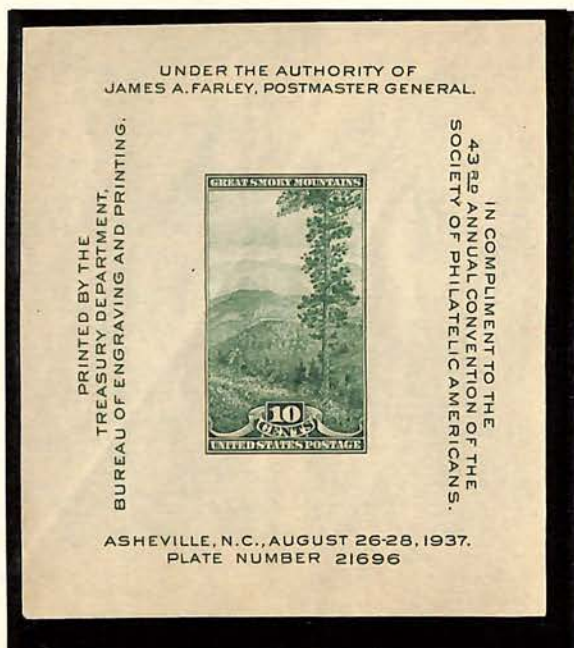
CONSTITUTION SESQUICENTENNIAL



"ADOPTION OF THE CONSTITUTION"  
BY J. B. STEARNS

SOCIETY OF PHILATELIC AMERICANS

Souvenir Sheet



VIRGINIA DARE



# UNITED STATES

1937

TERRITORIAL ISSUES

HAWAII



KAMEHAMEHA I  
STATUE BY T. R. GOULD

ALASKA



MT. MCKINLEY

PUERTO RICO



OLD GOVERNOR'S PALACE

VIRGIN ISLANDS



CHARLOTTE AMALIE HARBOUR

1938

SWEDISH-FINNISH



"LANDING OF THE SWEDS"  
BY STANLEY M. ARTHURS

NORTHWEST TERRITORY



"START WESTWARD"  
BY GUTZON BORGLUM

CONSTITUTION RATIFICATION



COLONIAL COURTHOUSE, WILLIAMSBURG, VA

IOWA TERRITORY



OLD CAPITOL BUILDING, IOWA CITY

# UNITED STATES

1938-54

PRESIDENTIAL ISSUE



BENJAMIN FRANKLIN



GEORGE WASHINGTON



MARTHA WASHINGTON



JOHN ADAMS



THOMAS JEFFERSON



JAMES MADISON



WHITE HOUSE



JAMES MONROE



JOHN QUINCY ADAMS



ANDREW JACKSON



MARTIN VAN BUREN



WILLIAM HENRY HARRISON



JOHN TYLER



JAMES KNOX POLK



ZACHARY TAYLOR



MILLARD FILLMORE



FRANKLIN PIERCE



JAMES BUCHANAN

# UNITED STATES

1938-54

PRESIDENTIAL ISSUE



ABRAHAM LINCOLN



ANDREW JOHNSON



ULYSSES SIMPSON GRANT



RUTHERFORD BIRCHARD HAYES



JAMES ABRAM GARFIELD



CHESTER ALAN ARTHUR



STEPHEN GROVER CLEVELAND



BENJAMIN HARRISON



WILLIAM MCKINLEY



THEODORE ROOSEVELT



WILLIAM HOWARD TAFT



THOMAS WOODROW WILSON



THOMAS WOODROW WILSON



WARREN GAMALIEL HARDING



CALVIN COOLIDGE

Set 130

# UNITED STATES

1939

PRESIDENTIAL ISSUE

Coil Stamps: Perforated 10 Vertically



GEORGE WASHINGTON



MARTHA WASHINGTON



JOHN ADAMS



THOMAS JEFFERSON



JAMES MADISON



WHITE HOUSE



JAMES MONROE



JOHN QUINCY ADAMS



JOHN TYLER

Coil Stamps: Perforated 10 Horizontally



GEORGE WASHINGTON



MARTHA WASHINGTON



JOHN ADAMS



THOMAS JEFFERSON

# UNITED STATES

1939

PRESIDENTIAL ISSUE

Coil Stamps: Perforated 10 Vertically



GEORGE WASHINGTON



MARTHA WASHINGTON



JOHN ADAMS



THOMAS JEFFERSON



JAMES MADISON



WHITE HOUSE



JOHN QUINCY ADAMS



JAMES MONROE



JOHN TYLER

# UNITED STATES

1939

PRESIDENTIAL ISSUE

Coil Stamps: Perforated 10 Horizontally



GEORGE WASHINGTON



MARTHA WASHINGTON



JOHN ADAMS



THOMAS JEFFERSON