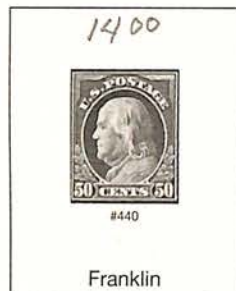
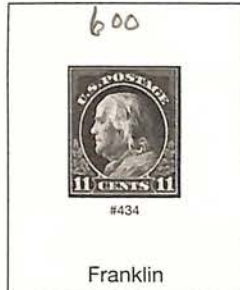
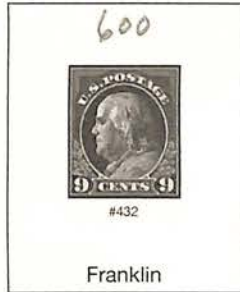


Series of 1914-15

Single Line Watermark

Perforated 10



Series of 1917-19

Flat Plate Printing
Perforated 11



Washington



Washington (I)



Washington (Ia)



Washington (I)



Washington (II)



Washington



Washington



#505
ERROR
Washington



Washington



Washington

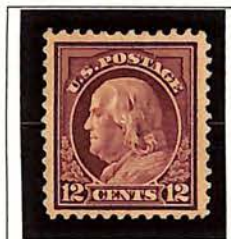
Series of 1917-19

Flat Plate Printing
Perforated 11



Franklin

Franklin



Franklin

Franklin

Franklin

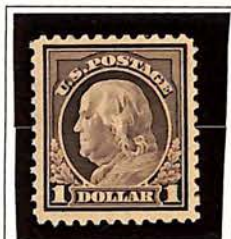
Franklin



Franklin

Franklin

Franklin



Franklin

Franklin

Series of 1922-25

Flat Plate Printing
Perforated 11



American Indian



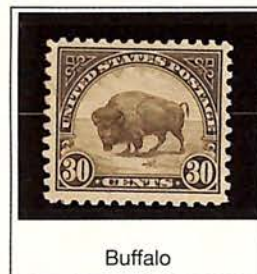
Statue of Liberty



Golden Gate



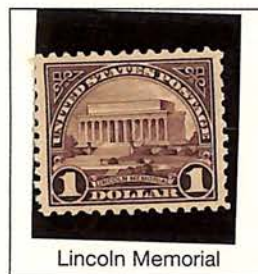
Niagara Falls



Buffalo



Arlington Amphitheater



Lincoln Memorial



U.S. Capitol



"America"

1926 White Plains Souvenir Sheet



#630

Battle of White Plains

1929 Rotary Stamp



Hale

Series of 1929 Kansas Overprints



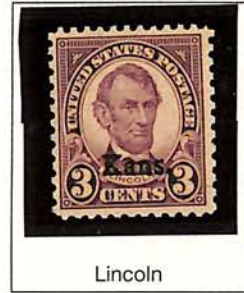
Franklin



Harding



Washington



Lincoln



M. Washington



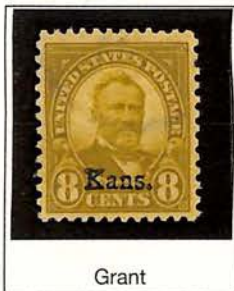
T. Roosevelt



Garfield



McKinley



Grant



Jefferson



Monroe

Series of 1929

Nebraska Overprints



Franklin



Harding



Washington



Lincoln



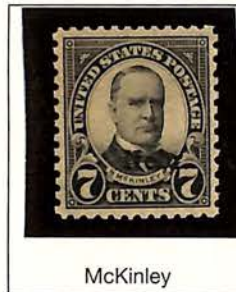
M. Washington



T. Roosevelt



Garfield



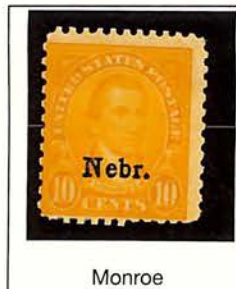
McKinley



Grant



Jefferson



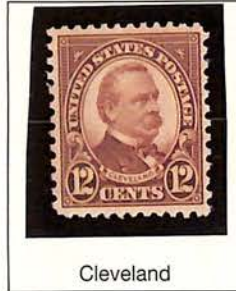
Monroe

1931 Rotary Stamps

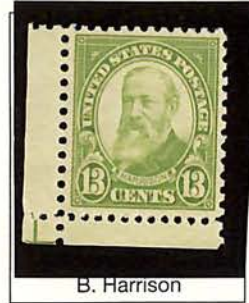
Perforated 11 x 10 1/2



Hayes



Cleveland



B. Harrison

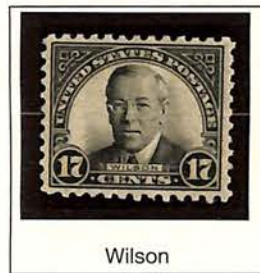


American Indian



Statue of Liberty

Perforated 10 1/2 x 11



Wilson



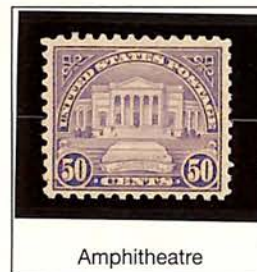
Golden Gate



Niagara Falls



Buffalo



Amphitheatre

1938 Presidential Series

Flat Plate Press Perforated 11



Woodrow Wilson



Warren Harding



Calvin Coolidge



UNITED STATES MIGRATORY BIRD

Hunting Stamps

CONSERVATION IN ACTION



1934-35



Mallard Ducks

Jay N. (Ding) Darling, famous cartoonist and noted conversationist fittingly designed the first of the annual series of migratory waterfowl hunting stamps issued by the Federal Government. The design features two mallards — a hen and a drake — dropping to a landing in a windy marsh.

1935-36



Canvasback Ducks

Frank W. Benson, called the dean of American duck etchers, provided the design for this issue showing three canvasbacks in their first sweep through the air after taking off from a placid surface interspersed with water plants.

1936-37



Canada Geese

Three Canada geese on the wing, with a background of cumulus clouds. This design was prepared by Richard E. Bishop, sportsman and artist, internationally famous for his wildlife etchings on glass and china.



UNITED STATES MIGRATORY BIRD

Hunting Stamps CONSERVATION IN ACTION



1937-38



Greater Scaup Ducks

Artist J. D. Knap, has captured five scaups in his drawing — three males and two females — otherwise known as bluebills and broadbills, coming in preparatory to alighting in a feeding area. The scene, which is typical of waterfowl feeding grounds along the Atlantic coast, is off the Great South Bay, New York.

1938-39



Pintail Drake & Hen

Distinguished etcher Roland Clark of New York City employs a pintail drake and hen as subjects for his design on this stamp. The birds are shown coming in for a landing.

1939-40



Green-winged Teals

A male and female green-winged teal standing at a marsh edge, with five teals descending for a landing in the background form the central design for artist Lynn Bogue Hunt's 1939-40 duck stamp.



UNITED STATES MIGRATORY BIRD

Hunting Stamps CONSERVATION IN ACTION



1940-41



Black Ducks

With wild rice shown in the background, artist Francis L. Jacques prepared this design featuring a pair of black ducks flying down wind over a marsh area.

1941-42



Ruddy Ducks

This issue had the largest sale of all duck stamps to that date with almost 1,500,000 stamps sold. A male and female ruddy duck with their brood swimming at the edge of a marsh is the setting for this stamp by artist E. R. Kolmbach.

1942-43



Pair of Widgeon

This design by artist A. Lassell Ripley shows a pair of widgeons, or baldpates, at the edge of a coastal marsh, with a second drake coming in to join them.

1943-44



Wood Ducks

Walter E. Bohl's winning design for the 1943-44 duck stamp pictures two wood ducks in flight. First day of sale was July 1, 1943.



UNITED STATES MIGRATORY BIRD

Hunting Stamps CONSERVATION IN ACTION



1944-45



White-fronted Geese

Three white-fronted geese, part of a flock coming in, was the theme for the design on this stamp designed by artist Walter A. Weber of Vienna, Va.

1945-46



Shoveller Ducks

Owen J. Gromme, curator of birds and mammals at the Milwaukee Public Museum, designed the 1945-46 duck stamp showing a female and two male shovellers in flight.

1946-47



Redhead Ducks

Employed as an artist by the Ohio Division of Conservation and Natural Resources, Robert W. Hines of Columbus, Ohio prepared the sketch of four redheads—a female and three males—riding the water with another male alighting for the 1946-47 Duck Stamp.



UNITED STATES MIGRATORY BIRD

Hunting Stamps

CONSERVATION IN ACTION



1947-48



Snow Geese

In very impressive black and white, the 1947-48 design by Jack Murray features two snow geese in flight. First day of sale was July 1, 1947.

1948-49



Buffle-head Ducks

Maynard Reece, staff artist and museum assistant, Iowa State Department of History and Archives, Des Moines, Iowa prepared this 1948-49 design which pictures three buffle-heads, two male and one female, in flight.

1949-50



Goldeneye Ducks

The original sketch, a black and white wash drawing, shows a male and female goldeneye winging into a quiet cove to view the courtship antics of two male ducks on the water. The scene is Leech Lake, Minn. "Roge" E. Preuss is the designer.



UNITED STATES MIGRATORY BIRD

Hunting Stamps CONSERVATION IN ACTION



1950-51



Trumpeter Swans

A black and white wash drawing pictures two trumpeter swans flying over the Red Rock Lakes National Wildlife Refuge in Montana—original by Walter A. Weber of Vienna, Va. He was also the designer of the 1944-45 stamp.

1951-52



Gadwall Ducks

Maynard Reece, designer of the 1948-49 stamp, designed this 1951-52 issue—showing two gadwall ducks jumping from a pond. There were 2,167,767 stamps sold of this issue.

1952-53



UNITED STATES MIGRATORY BIRD

Hunting Stamps CONSERVATION IN ACTION



1956-57



American Merganser

Artist Edward J. Bierly of Arlington, Va., selected the American Merganser for his prize winning design. The original sketch, a black and white watercolor, features a pair of American mergansers flying low over fog-bound water. Of this issue, 2,369,940 copies were sold.

1957-58



American Eider

Placed on first day of sale July 1, 1957, this medium yellowish-green stamp is taken from a tempera watercolor featuring two American eider ducks flying over the surf. Jackson Miles Abbott of New Alexandria, Va., is the artist.

1958-59



Canada Geese

The very popular Canada geese are the subjects for this 1958-59 issue. Leslie C. Kouba, the artist, pictures several Canada geese feeding in a picked cornfield in the upper Midwest country.

1959-60



hunters or dogs. Moynard Reece of Des Moines, Iowa is the designer.



UNITED STATES MIGRATORY BIRD

Hunting Stamps

CONSERVATION IN ACTION



1960-61



was the choice of the judges . . . six regional directors of the Fish and Wildlife Service.

1961-62



black and white wash drawing which the artist titled, "Nine Mallards." The theme of the contest was "Habitat Produces Ducks."

1962-63



Pintail Drakes

For the first time in the history of the annual contest, an artist won for two consecutive years. He was Edward A. Morris of Minneapolis. He submitted a design he called "Pintails." The design features two pintale drakes coming in for a landing. There were 124 drawings submitted in this 1962-63 contest.

1963-64



background. The design was selected from 161 entries submitted by 87 artists.



1918 Curtiss Jenny



Biplane



Biplane

1923 Airmails



Radiator & Propeller



Air Service Emblem



DeHavilland Biplane

1930 Graf Zeppelin Issues



Zeppelin over the Atlantic



#C14

Zeppelin between Continents



#C15

Zeppelin passing Globe

1931-32 Airmails



Winged Globe



Winged Globe

1933 Airmail



"Century of Progress" Flight

POST OFFICE SEAL

ERROR - IMPERFORATE

1950

OX396

50⁰⁰

