

IMP



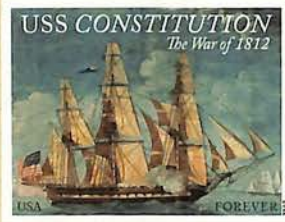
4694a-97a

10-



4694a-97c

12-



4703a 2.45

IMP

MAJOR LEAGUE BASEBALL ALL-STARS

WILLIE STARGELL

VI 111



VI 111



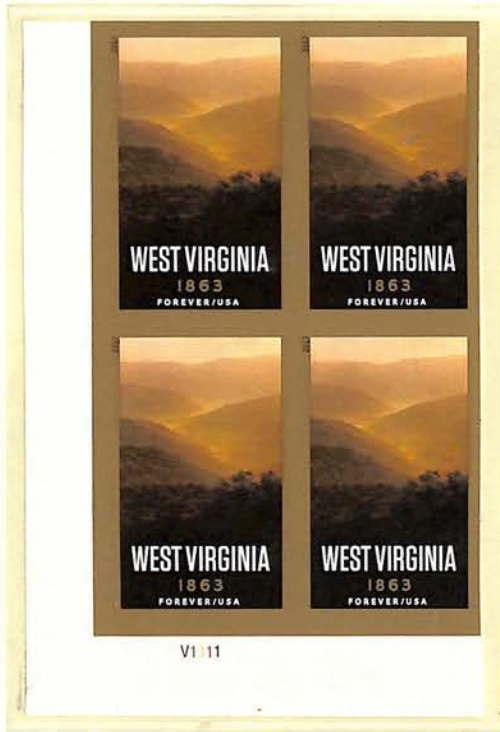
VI 111



VI 111

4694a-97a
Set 40

IMP



VI 11

4790 7-



S11 1

S11 1

4791-95b 22.50



4912-156 18- / 21.90



4922-206 18- IMPERF / 27.90



4950-1b 7-11-

IMPERF

IMP



49790
7-15-



49788 2K/40-

IMP



5056a

18-1/31-



49435
7/13-



4937-40c
16-12.95



IMPERF

4946-49
16-10.95

47H6a

25-

IMPERF

X2



"For the environment after all is where we all meet; where we all have a mutual interest; it is one thing that all of us share. It is not only a mirror of ourselves, but a focusing lens on what we can become."

LADY BIRD JOHNSON
1912 CENTENNIAL 2012



8-21

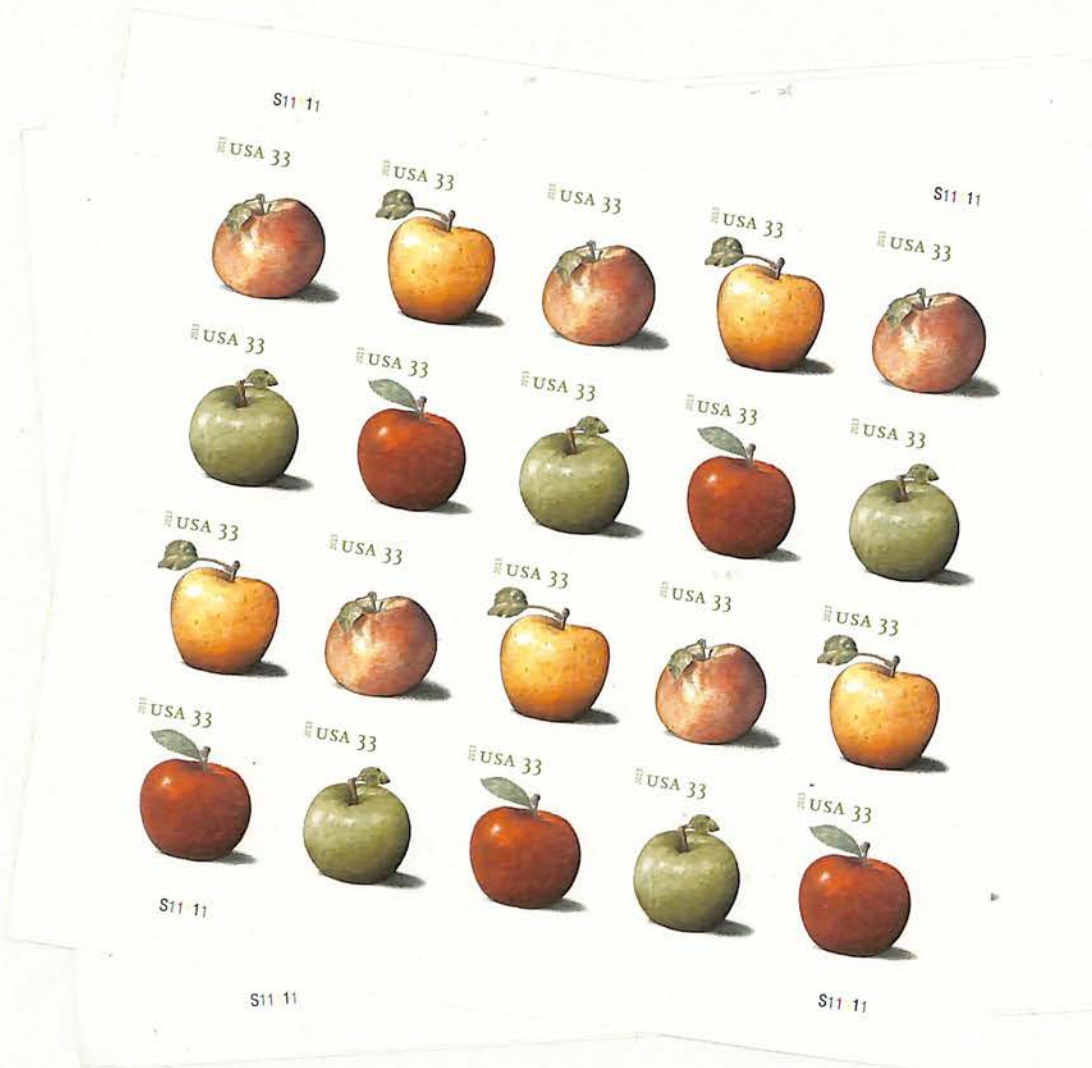
4728-31

IMPERF
DO DIE CUTS

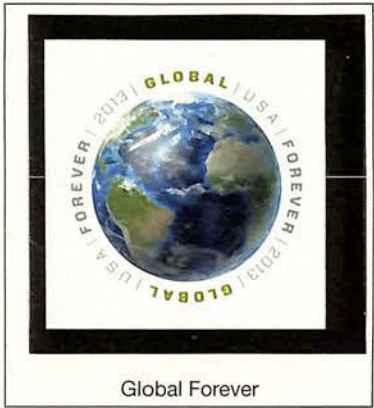
35
EA
B

APPLES

X5



2013 Imperforate Commemoratives



Global Forever

4740a 5-



Sealed with Love

4741a 2-



Rosa Parks

4742a 2.25



Muscle Cars

4743-476

11.25

2013 Imperforate Commemoratives



EID

4800a 2-



Althea Gibson

4803a 1.75



March on Washington

4804a 1.75



Battle of Lake Erie

4805a
1.75



1.75 4807a

2013 Imperforate Commemoratives



48256-443

5 pens 55-

2014 Imperforate Commemoratives



BATMAN

Batman

4928-356 30-1/59-

2014 Imperforate Commemoratives

