

P. C. Davis
Box 1136
Ancon C.Z.



FIRST DAY OF ISSUE



P. C. DAVIS
Box 1136
Ancon
Canal Zone

Canal Zone "1939"
25th Anniversary Commemorative
#120-35 Complete Casketed Set of 16 SCARCE \$150.00

P. C. Davis
Box 1136
Ancon, C. Z.



FIRST DAY OF ISSUE



REGISTERED
1703

PAR AVION
BY AIR MAIL

P. C. Davis
Box 1136
Ancon, C. Z.

EMERGENCY ISSUE

- - ISSUES OF 1937-38 SURCHARGED - -

1943

UNWMKD:

PERF. 11



ISSUED: APRIL 30, 1943

1-3



6-8



18



20



30





42



80-81



89



94





Puerto Rico
1873
1-3



1874
4



1875
5-7



1p
brown
7

1876
8-12



1877
13-17



10¢
carm
14

15¢
green
15



1878
18-22

5¢
bister
18

10¢
red-br
19



1p
bistre
22

1879
23-28



UNITED STATES

CONFEDERATE STATES

1861



JEFFERSON DAVIS



THOMAS JEFFERSON

1862



ANDREW JACKSON



JEFFERSON DAVIS



ROSE

THOMAS JEFFERSON



JEFFERSON DAVIS



JOHN C. CALHOUN



1863



ANDREW JACKSON



JEFFERSON DAVIS



WITH FRAME LINE

JEFFERSON DAVIS



JEFFERSON DAVIS



JEFFERSON DAVIS



GEORGE WASHINGTON



South Carolina, Mississippi, Florida, Alabama, Georgia, Louisiana, Texas, Virginia, Arkansas, North Carolina and Tennessee seceded from the U.S. and formed the Confederate States. Until the Confederacy printed stamps (late in 1861) many towns issued their own stamps, known as "Postmasters' Provisionals"

CANAL ZONE

1904



1924-25: Flat Plate Printing: Perforated 11: Flat Top "A"



1925-26: Flat Plate Printing: Perforated 11: Pointed Top "A"



1927: Rotary Press: Perforated 10

1926: SESQUICENTENNIAL

1927: Perf. 10

1925-26 Perf. 11



1927-31: Rotary Press: Perforated 11x10½



CANAL ZONE

1928-40



1933: Rotary Press: Perf. 11x10½



1934: Perf. 11



1939



1939: 25TH ANNIVERSARY OPENING OF CANAL



CANAL ZONE

AIR POST STAMPS

POSTAGE DUE STAMPS

1914



1924: Flat Top "A"



1925



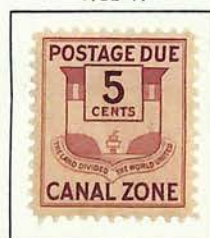
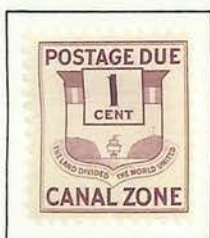
1925: Pointed Top "A"



1929-30



1932-41



PHILIPPINES

ISSUED UNDER SPANISH DOMINION

Unwatermarked

1854



Imperforate
10 C
CARMINE

1855



Re-engraved
Circle Smaller
5 C
VERMILION

Watermarked Loops

1856



Unwatermarked

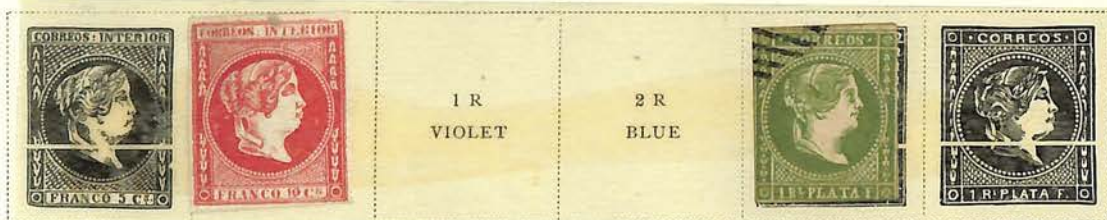
1857-59



1861-62



1863



1 R
VIOLET

2 R
BLUE

1864



21

1868

22



Issue of 1864
Overprinted
Like cut
31-8 C
BLACK
ON BUFF

DO

24

1871



Overprinted
On Issue of 1863
1 R
GRAY GREEN

PHILIPPINES

Unwatermarked

1872

| | | | | | |
|--|---------------|-------------|---|---------------------------|--------------------------------|
| Same Overprint On Issue of 1863 5 C VERMILION | 1 R VIOLET | 2 R BLUE | On Issue of 1856 1 R GREEN ON BLUE | 2 R CARMINE ON BLUE | On Issue of 1862 5 C RED |
|--|---------------|-------------|---|---------------------------|--------------------------------|

1874

| | | |
|---|---------------------------------------|--------------|
|  | On Issue of 1854 1 R SLATE BLUE | 2 R GREEN |
|---|---------------------------------------|--------------|

1870



39

1872



45 1874

| | | | |
|---|---|--|-------------------|
|  |  |  | 1 P 25 C BROWN |
|---|---|--|-------------------|

1875



1877



1877-79

| | | |
|---|---|--|
|  | Black Surcharge 12 C On 25 M BLACK | Blue Surcharge 12 C On 25 M BLACK |
|---|---|--|

PHILIPPINES

Unwatermarked
1878-79



1879



1880-86



82

83

1881-88



PHILIPPINES

Unwatermarked

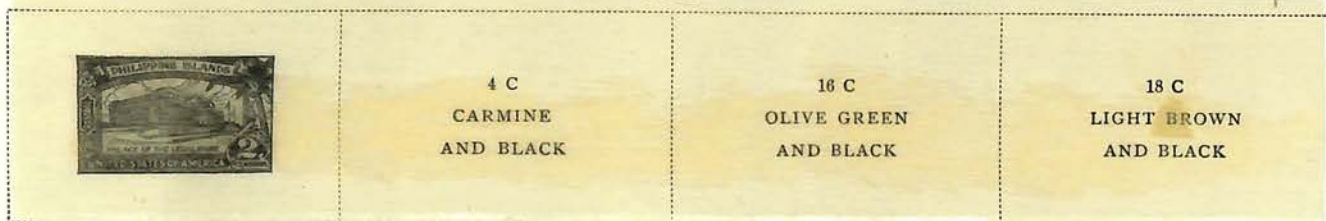
1923-26



303 A

304

1926

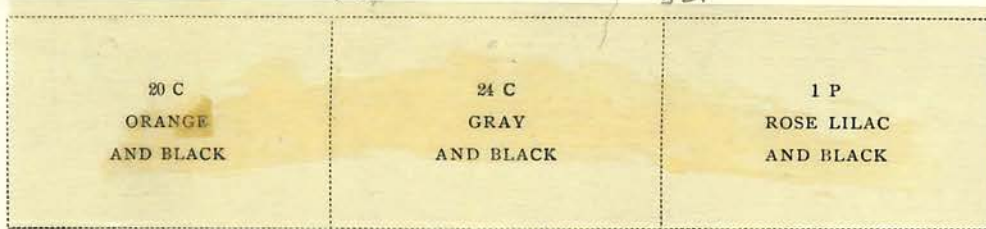


319

320

321

322



323

324

1928



1925-31



122375

IDEAL ENGRAVING & PRINTING



NO GUM .35

NO GUM .35



22.50

4.25

2.50

HH 37.50

50.00 (2)

1.50

5.75



7.50

12.50

14.00

4.25

2.50



20

20

110

19.25

100

200

275



1934



225



2850

3075



AIR MAIL

150 D



1750



POST GUM 5500 926 HH 5750



5750



5750



NO GUM



1928

NO GUM



NO GUM



NO GUM



POST GUM



NO GUM



NO GUM



8900

1932



1550



1928



140



JOSE CASTANER

APARTADO No. 1973
TELEFONO No 56477
MANILA, FILIPINAS



MANILA
NOV 9
2 PM

MANILA
NOV 9
2 PM

P.I. 19

P.I. 19

Sr. Don EMILIO Ma: DE TORRES.

secretario particular de S. M. el REY de ESPAÑA.

MADRID.



MANILA
NOV 9
2 PM

MANILA
NOV 9
2 PM

MANILA
NOV 9
2 PM

P.I. 19

P.I. 19

P.I. 19

PHILIPPINES

POSTAGE DUE STAMPS

Watermarked **USPS**

1899

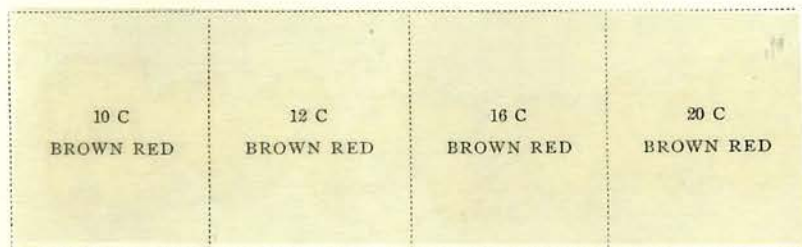
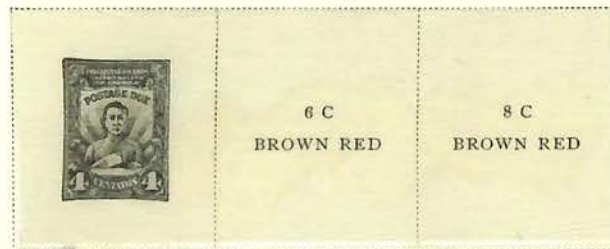


1901



Unwatermarked

1928



1937



NJ-1

DANISH WEST INDIES

Watermarked Small Crown

1855-67



1872-73



1873-96



14 C
LILAC
AND GREEN

1887



1895



1896-1900



1900



DANISH WEST INDIES

Watermarked Crown



Like cut
Perf. 14 x 13 1/4
2 C
On 3 C
BLUE AND
CARMINE



Green Surcharge
2 C
On 3 C
BLUE
AND LAKE



Watermarked Two Crowns



2 F
ORANGE RED
AND BROWN

5 F
YELLOW AND
BROWN

Watermarked Crown



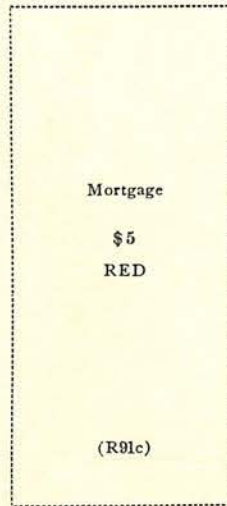
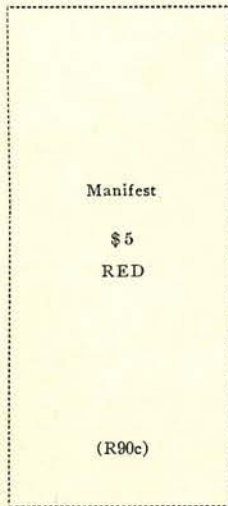
Watermarked Multiple Crosses

1915-17



REVENUE

First Issue
1862-71
Perforated



REVENUE

First Issue
1862-71
Perforated



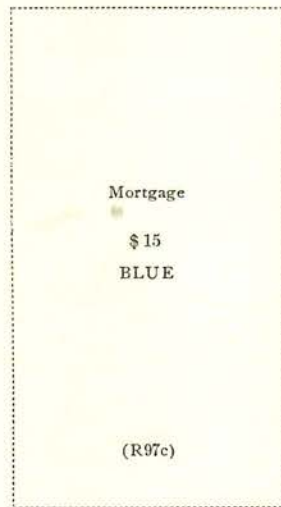
Conveyance
\$ 10
GREEN

(R94c)



Probate of Will
\$ 10
GREEN

(R96c)



Mortgage
\$ 15
BLUE

(R97c)



Probate of Will
\$ 20
ORANGE

(R99c)



U. S. Internal Revenue
\$ 200
GREEN
AND RED

(R102c)

U. S. Internal Revenue
\$ 50
GREEN

(R101c)

REVENUE

Second Issue

1871



\$1.30
BLUE
AND BLACK

(R119)



\$1.60
BLUE
AND BLACK

(R121)

\$1.90
BLUE
AND BLACK

(R122)

\$2
BLUE
AND BLACK

(R123)



\$3.50
BLUE
AND BLACK

(R126)



\$10
BLUE
AND BLACK

(R128)



\$20
BLUE
AND BLACK

(R129)

\$25
BLUE
AND BLACK

(R130)

\$50
BLUE
AND BLACK

(R131)

REVENUE

Third Issue
1871-72



6 C
ORANGE
AND BLACK

(R138)



40 C
BROWN
AND BLACK

(R141)



\$3
GREEN
AND BLACK

(R147)



\$ 20
ORANGE
AND BLACK

(R150)