

NEWFOUNDLAND

1857

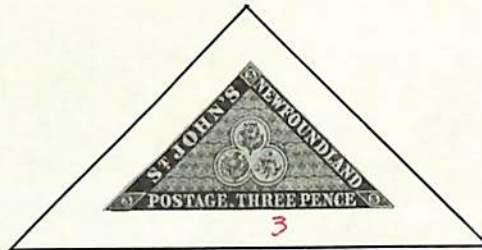
Thick Porous Wove Paper with Mesh



CROWN OF GREAT BRITAIN & HERALDIC
FLOWERS OF UNITED KINGDOM



SCARLET VERMILION
2
HERALDIC FLOWERS



ROSE, THISTLE & SHAMROCK
3



SCARLET VERMILION
4
HERALDIC FLOWERS



BROWN VIOLET
5
CROWN OF GREAT BRITAIN & HERALDIC FLOWERS



SCARLET VERMILION
6
HERALDIC FLOWERS



SCARLET VERMILION
7
HERALDIC FLOWERS



SCARLET VERMILION
8
HERALDIC FLOWERS

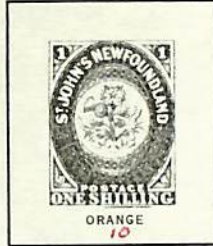


SCARLET VERMILION
9
HERALDIC FLOWERS

NEWFOUNDLAND

1860

Laid Paper



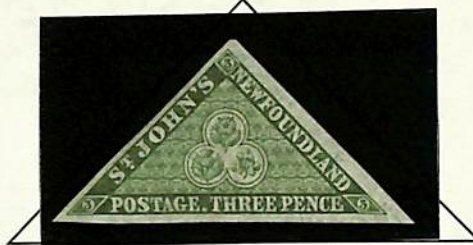
HERALDIC FLOWERS

1860

Thin to Thick Wove Paper; No Mesh



HERALDIC FLOWERS



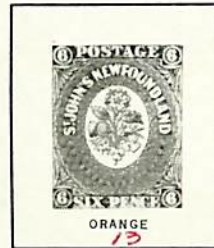
ROSE, THISTLE & SHAMROCK



HERALDIC FLOWERS



CROWN OF GREAT BRITAIN & HERALDIC FLOWERS OF UNITED KINGDOM



HERALDIC FLOWERS

NEWFOUNDLAND

1861-62

Thin to Thick Wave Paper; No Mesh



VIOLET BROWN
15
CROWN OF GREAT BRITAIN
& HERALDIC FLOWERS



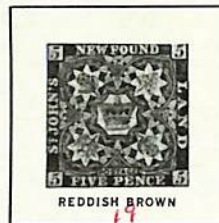
ROSE
17
HERALDIC FLOWERS



REDDISH BROWN
16
CROWN OF GREAT BRITAIN
& HERALDIC FLOWERS



ROSE
18
HERALDIC FLOWERS



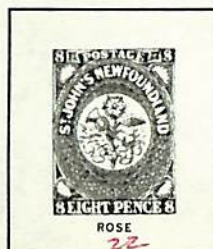
REDDISH BROWN
19
CROWN OF GREAT BRITAIN
& HERALDIC FLOWERS



ROSE
20
HERALDIC FLOWERS



ROSE
21
HERALDIC FLOWERS



ROSE
22
HERALDIC FLOWERS



HERALDIC FLOWERS

NEWFOUNDLAND

1880-96



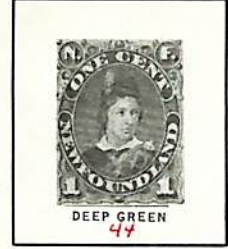
VIOLET BROWN
41
KING EDWARD VII.
WHEN PRINCE OF WALES



GRAY BROWN
42



BROWN
43



DEEP GREEN
44



YELLOW GREEN
46
CODFISH



GREEN
47



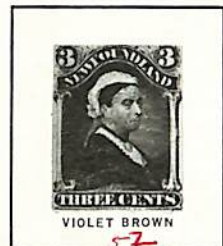
GREEN
45
KING EDWARD VII.
WHEN PRINCE OF WALES



QUEEN VICTORIA



QUEEN VICTORIA



VIOLET BROWN
52
QUEEN VICTORIA



PALE BLUE
53
SEAL



DARK BLUE
54



BRIGHT BLUE
55

NEWFOUNDLAND

1887-96



NEWFOUNDLAND DOG



ATLANTIC BRIGANTINE

1890



1897



QUEEN VICTORIA



NEWFOUNDLAND

1897

400th ANNIVERSARY OF JOHN CABOT'S DISCOVERY OF NEWFOUNDLAND — 60th YEAR OF QUEEN VICTORIA'S REIGN



QUEEN VICTORIA



JOHN CABOT



HUNTING CARIBOU



CAPE BONAVISTA



MINING



LOGGING



FISHING



CABOT'S SHIP "MATTHEW"



SEALS



SALMON FISHING



ICEBERG OFF ST. JOHN'S



PTARMIGAN



SEAL OF THE COLONY



KING HENRY VII

NEWFOUNDLAND

1897-1901



KING EDWARD VIII,
WHEN A CHILD



QUEEN VICTORIA



QUEEN VICTORIA



KING EDWARD VII,
WHEN PRINCE OF WALES



KING EDWARD VII,
WHEN PRINCE OF WALES



QUEEN ALEXANDRA,
WHEN PRINCESS OF WALES



QUEEN MARY,
WHEN DUCHESS OF YORK



KING GEORGE V,
WHEN DUKE OF YORK

1908



MAP OF NEWFOUNDLAND

NEWFOUNDLAND

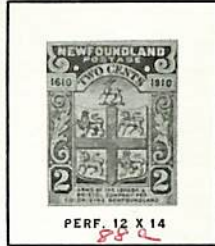
1910

300th ANNIVERSARY OF THE COLONIZATION OF NEWFOUNDLAND (GUY ISSUE)

Lithographed



ARMS COMPANY



GUY'S SHIP "ENDEAVOUR"



VIEW OF CUPIDS ON CONCEPTION BAY



SIR WILSON



NEWFOUNDLAND

1910

(continued)



VIEW OF MOSQUITO



LOGGING CAMP



PAPER MILLS



1911

Engraved



VIEW OF MOSQUITO



LORD VERULAM



LOGGING CAMP



PAPER MILLS



NEWFOUNDLAND

1911

CORONATION OF GEORGE V — ROYAL FAMILY ISSUE



QUEEN MARY



KING GEORGE V



KING EDWARD VIII,
WHEN PRINCE OF WALES



KING GEORGE VI,
WHEN PRINCE ALBERT



PRINCESS MARY



PRINCE HENRY



PRINCE GEORGE



PRINCE JOHN



QUEEN MOTHER ALEXANDRA



DUKE OF CONNAUGHT



SEAL OF COLONY

NEWFOUNDLAND

1919

TRAIL OF THE CARIBOU — NEWFOUNDLAND CONTINGENT IN WORLD WAR I



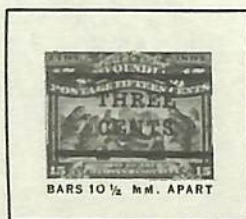
CARIBOU



1920



SEAL OF COLONY



SEALS
BARS 10 1/2 MM. APART

SEALS



SEALS
BARS 13 1/2 MM. APART

SEALS



ICEBERG OFF ST. JOHN'S

NEWFOUNDLAND

1923-24



TWIN HILLS, TOR'S COVE



SOUTH-WEST ARM, TRINITY



STATUE OF THE FIGHTING
NEWFOUNDLANDER, ST. JOHN'S



HUMBER RIVER



COAST OF TRINITY



UPPER STEADIES, HUMBER RIVER



QUIDI VIDI, NEAR ST. JOHN'S



CARIBOU CROSSING LAKE



HUMBER RIVER CANYON



HUMBER RIVER, NEAR LITTLE RAPIDS



TOPSAIL FALLS, NEAR ST. JOHN'S



SHELL BIRD ISLAND



MOUNT MORIAH, BAY OF ISLANDS



PLACENTIA, FROM MT. PLEASANT

NEWFOUNDLAND

1928



MAP OF NEWFOUNDLAND



S. S. CARIBOU



KING GEORGE V & QUEEN MARY



KING EDWARD VIII.
WHEN PRINCE OF WALES



EXPRESS TRAIN



CABOT TOWER, ST. JOHN'S



NEWFOUNDLAND HOTEL,
ST. JOHN'S



HEART'S CONTENT



GENERAL POST OFFICE,
ST. JOHN'S



CABOT TOWER, ST. JOHN'S



WAR MEMORIAL, ST. JOHN'S



GENERAL POST OFFICE,
ST. JOHN'S



FIRST NONSTOP
TRANSATLANTIC FLIGHT, 1919



COLONIAL BUILDING, ST. JOHN'S



GRAND FALLS, LABRADOR

NEWFOUNDLAND

1929



1929-31

Re-engraved: Unwatermarked



MAP OF NEWFOUNDLAND



S.S. CARIBOU



KING GEORGE V & QUEEN MARY



KING EDWARD VIII,
WHEN PRINCE OF WALES



EXPRESS TRAIN



NEWFOUNDLAND HOTEL, ST. JOHN'S



WAR MEMORIAL, ST. JOHN'S



FIRST NONSTOP TRANSATLANTIC
FLIGHT, 1919



COLONIAL BUILDING, ST. JOHN'S

NEWFOUNDLAND

1931

Re-engraved: Watermarked with Newfoundland Coat of Arms



MAP OF NEWFOUNDLAND



S.S. CARIBOU



KING GEORGE V & QUEEN MARY



KING EDWARD VIII,
WHEN PRINCE OF WALES



EXPRESS TRAIN



NEWFOUNDLAND HOTEL, ST. JOHN'S



HEART'S CONTENT



WAR MEMORIAL, ST. JOHN'S



FIRST NONSTOP TRANSATLANTIC
FLIGHT, 1919



COLONIAL BUILDING, ST. JOHN'S



GRAND FALLS, LABRADOR

NEWFOUNDLAND

1932-37

Perforated 13½, 14



CODFISH



CODFISH



KING GEORGE V



KING GEORGE V



QUEEN MARY



KING EDWARD VIII.
WHEN PRINCE OF WALES



KING EDWARD VIII.
WHEN PRINCE OF WALES



CARIBOU



CARIBOU



CARIBOU



QUEEN ELIZABETH II.
WHEN PRINCESS



QUEEN ELIZABETH.
WHEN DUCHESS OF YORK

NEWFOUNDLAND

1932-37

(continued)

Perforated 13½, 14



CORNER BROOK PAPER MILLS



SALMON LEAPING RAPIDS



NEWFOUNDLAND DOG



BABY WHITEGOAT SEAL



CAPE RACE



LOADING IRON ORE AT BELL ISLAND



SEALING FLEET



FISHING FLEET



FISHING FLEET

1933



NEWFOUNDLAND

1933

350th ANNIVERSARY OF FORMAL ANNEXATION OF NEWFOUNDLAND TO ENGLAND — SIR HUMPHREY GILBERT ISSUE



SIR HUMPHREY GILBERT



COMPTON CASTLE, DEVON



ETON COLLEGE



GILBERT COAT OF ARMS



GILBERT RECEIVING ROYAL PATENTS



TOKEN FROM QUEEN ELIZABETH I



GILBERT'S FLEET LEAVING PLYMOUTH



ROYAL COAT OF ARMS



GILBERT'S FLEET ARRIVING AT ST. JOHN'S



ANNEXATION 5TH AUGUST, 1583



GILBERT ON "SQUIRREL"



QUEEN ELIZABETH I



CAPT. JOHN MASON'S MAP OF NEWFOUNDLAND, 1626



GILBERT STATUE AT TRURO

NEWFOUNDLAND

1935

SILVER JUBILEE ISSUE



WINDSOR CASTLE & KING GEORGE V



1937

CORONATION ISSUE



KING GEORGE VI & QUEEN ELIZABETH



NEWFOUNDLAND

1937

CORONATION ISSUE — Additional Values



CODFISH



MAP OF NEWFOUNDLAND



MAP OF NEWFOUNDLAND



CARIBOU



CORNER BROOK PAPER MILLS



SALMON LEAPING RAPIDS



NEWFOUNDLAND DOG



BABY WHITEGOAT SEAL



CAPE RACE



LOADING IRON ORE AT BELL ISLAND



SEALING FLEET



FISHING FLEET

NEWFOUNDLAND

1938

Perforated 13½



KING GEORGE VI



QUEEN ELIZABETH



QUEEN ELIZABETH II.
WHEN PRINCESS



QUEEN MOTHER MARY

1939

ROYAL VISIT



KING GEORGE VI & QUEEN ELIZABETH



1941

50th ANNIVERSARY OF THE FOUNDING OF GRENFELL MISSION



SIR WILFRED GRENFELL & "STRATHCONA" II

NEWFOUNDLAND

1941-44

Perforated 12½



CODFISH



KING GEORGE VI



QUEEN ELIZABETH



QUEEN ELIZABETH II, WHEN PRINCESS



CARIBOU



QUEEN MOTHER MARY



CORNER BROOK PAPER MILLS



SALMON LEAPING RAPIDS



NEWFOUNDLAND DOG



BABY WHITEGOAT SEAL



CAPE RACE



LOADING IRON ORE AT BELL ISLAND



SEALING FLEET



FISHING FLEET

NEWFOUNDLAND

1943



MEMORIAL UNIVERSITY COLLEGE

1946



MEMORIAL UNIVERSITY COLLEGE

1947

21st BIRTHDAY OF PRINCESS ELIZABETH



QUEEN ELIZABETH II, WHEN PRINCESS

450th ANNIVERSARY OF
CABOT'S ARRIVAL OFF CAPE BONAVISTA



DECK OF THE "MATTHEW"

NEWFOUNDLAND

AIR POST STAMPS

1931: Unwatermarked



FIRST TRANSATLANTIC MAIL PLANE & PACKET SHIP



DOG SLED & AEROPLANE



ROUTES OF HISTORIC TRANSATLANTIC FLIGHTS

1931: Watermarked with Newfoundland Coat of Arms



FIRST TRANSATLANTIC MAIL PLANE & PACKET SHIP



DOG SLED & AEROPLANE



ROUTES OF HISTORIC TRANSATLANTIC FLIGHTS

1932: DO-X TRANSATLANTIC FLIGHT



ROUTES OF HISTORIC TRANSATLANTIC FLIGHTS

NEWFOUNDLAND

AIR POST STAMPS

1933



"PUT TO FLIGHT"



"LAND OF HEART'S DELIGHT"



"SPOTTING THE HERD"



"NEWS FROM HOME"



"LABRADOR, THE LAND OF GOLD"

1933: BALBO TRANSATLANTIC FLIGHT



"LABRADOR, THE LAND OF GOLD"

1943



"VIEW OF ST. JOHN'S"