

LOUISIANA POSTAL HISTORY

New Orleans Revenue Stamps

Alcoholic Beverage
Circa 1937



Wines
Less Than 14%
(Specimen)



Liquors
(Specimen)



LOUISIANA POSTAL HISTORY



Regular Issue of 1926-34

Scott 637, 5¢ Roosevelt (dark blue).

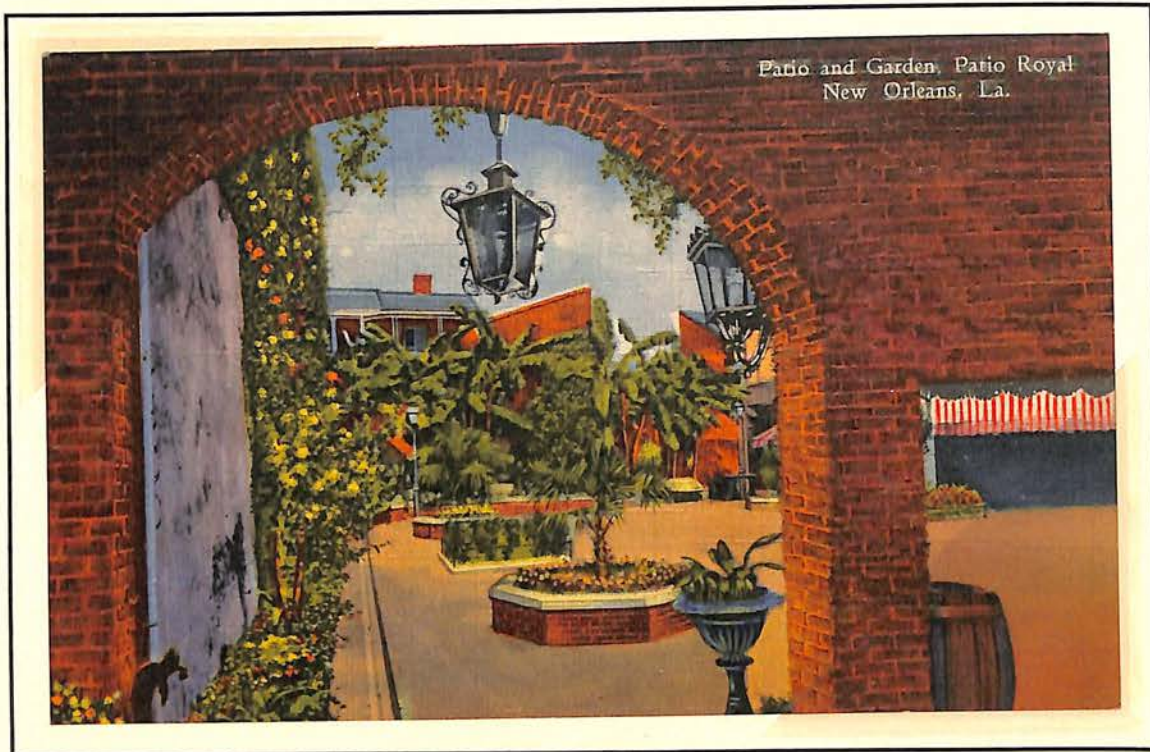
Rotary press printing by the Bureau of Engraving and Printing.
Plates of 400 subjects in four panes of 100 each for all values through 50¢.
Unwatermarked, perforated 11 x 10½.

Posted in New Orleans to Le Havre, France on January 7, 1937.
Machine cancelled with a 22-mm single circle date stamp. It is not known
what the numeral "1" within the circle identifies.

The enclosed letter from the sender, Mrs. M. D. Grossman of
2727 Soniat Street, to Léon Dreyfus is rather mundane, speaking of the local
weather, a trip to New Iberia, Louisiana and the early signs of spring.

LOUISIANA POSTAL HISTORY

Curteich Art-Colortone "linen" post cards published in 1937
depicting French Quarter scenes.



Above:

Famed patio and garden located at 417 Royal Street to which thousands of tourists are attracted annually. The building which once housed the Louisiana Bank established in 1804, and which later became the home of Paul Morphy, world-famous chess champion, is now used as a restaurant.

§

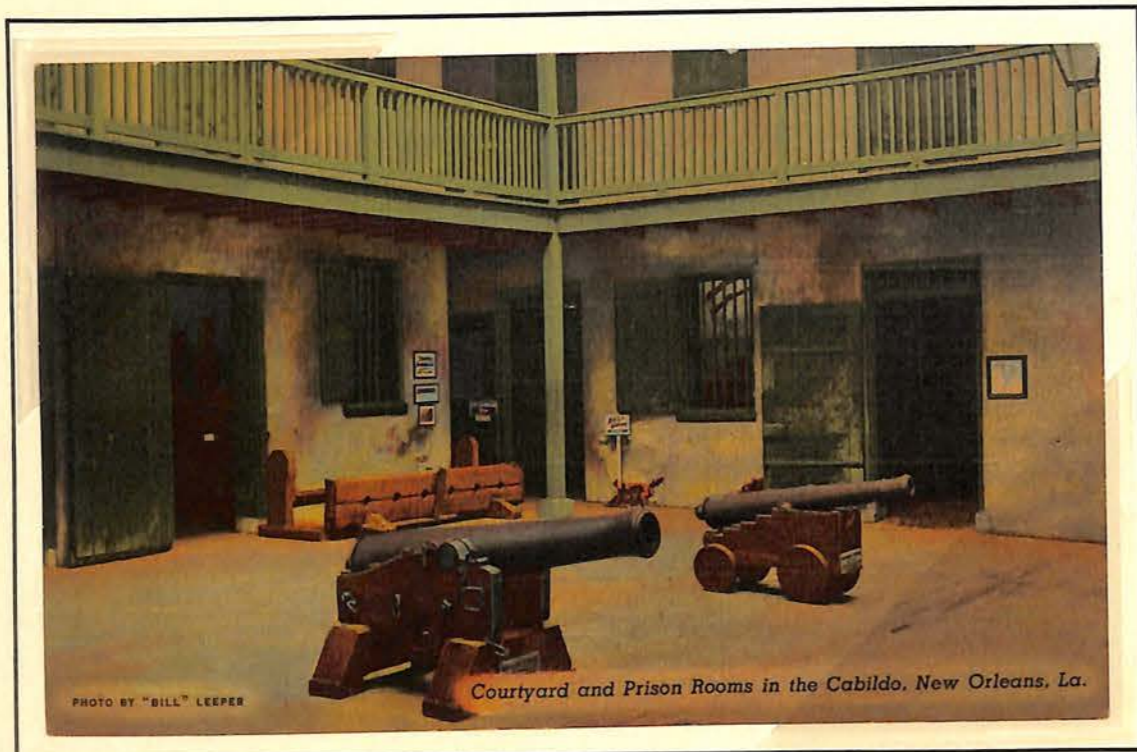
Upper Right: The Court Yard and Prison Rooms, Old Cannon and Torture Stocks in the Cabildo at Chartres and St. Peter's Streets. The room at the extreme right on the ground floor, is the cell in which the pirate Jean Lafitte was incarcerated after his capture by the Americans. Later on his services were accepted by General Andrew Jackson and he participated in the Battle of New Orleans, where he covered himself with glory, subsequently receiving pardon from the Congress of the United States.

§

Lower Right: The Court Yard in the Louisiana State Museum is seen through the old iron gates. In the Museum are relics of bygone years dating back over a hundred years. A most interesting place to visit in the old Vieux Carré known to visitors as the Old French Quarters.

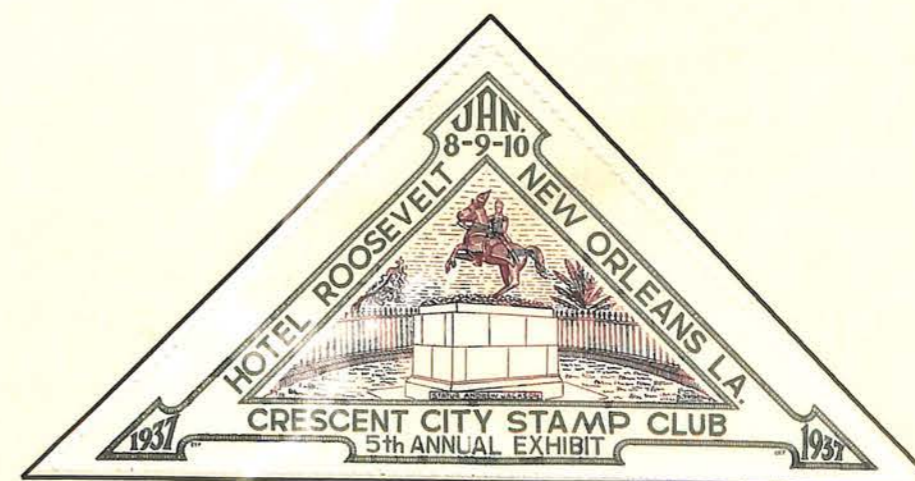
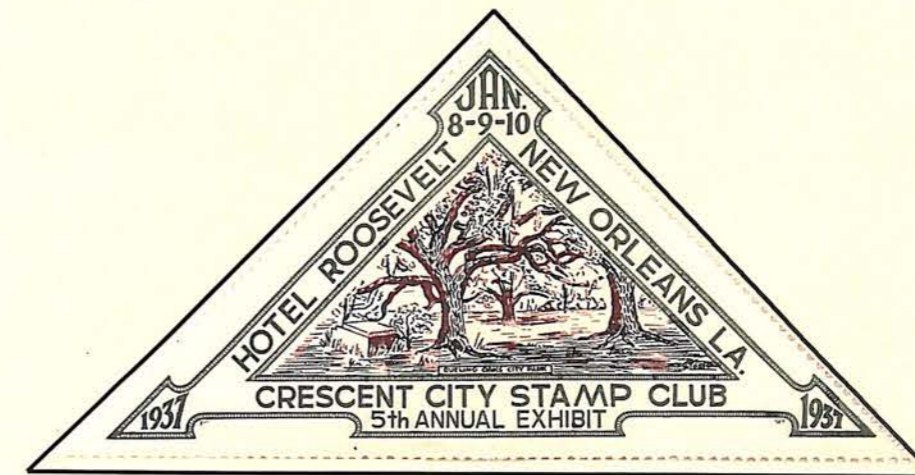
LOUISIANA POSTAL HISTORY

Curteich Art-Colortone "linen" post cards published in 1937 depicting French Quarter scenes.



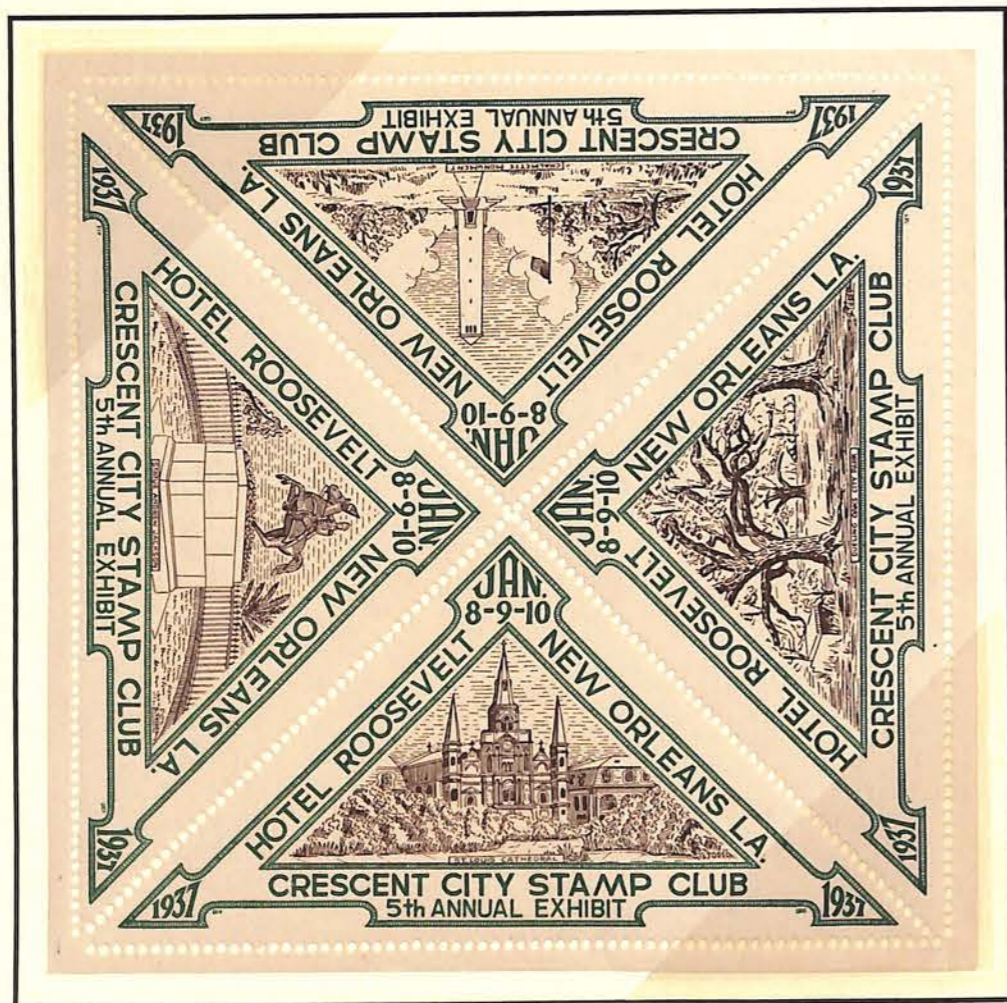
LOUISIANA POSTAL HISTORY

Philatelic Exhibitions



Reproduction of the skewed vignettes in the 1937 Crescent City Stamp Club souvenir sheet.

LOUISIANA POSTAL HISTORY
Philatelic Exhibitions



The Fifth Annual Exhibit
CRESCENT CITY STAMP CLUB
January 8-9-10, 1937
Hotel Roosevelt

LOUISIANA POSTAL HISTORY



1937

Above Right:

Broussard's Paradise Courtyard Restaurant, 819 Conti Street. Where many distinctive cooking creations have originated to make New Orleans cuisine famous. It is located in the heart of the Vieux Carre Section.

Tichnor Quality Views Post Card No. 127126,
franked with Sc 632 and posted in New Orleans on April 7, 1937.

§

Below Right:

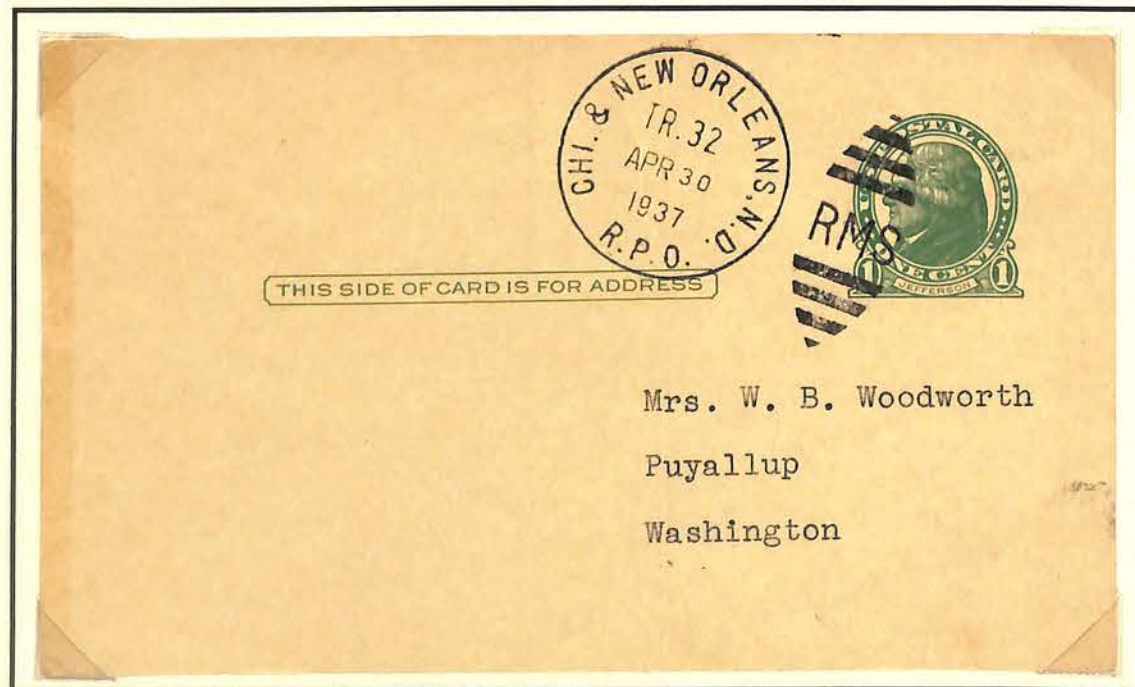
Chi. & New Orleans N.D. R.P.O. cancel on Sc UX27 postmarked April 30, 1937. The Chicago & New Orleans Railroad was operated by the Illinois Central Railroad from 1935 to 1939 over a 396 mile route between Memphis and New Orleans.

LOUISIANA POSTAL HISTORY
1937



BROUSSARD'S PARADISE COURTYARD RESTAURANT, NEW ORLEANS, LA.

Broussard's Paradise Courtyard Restaurant

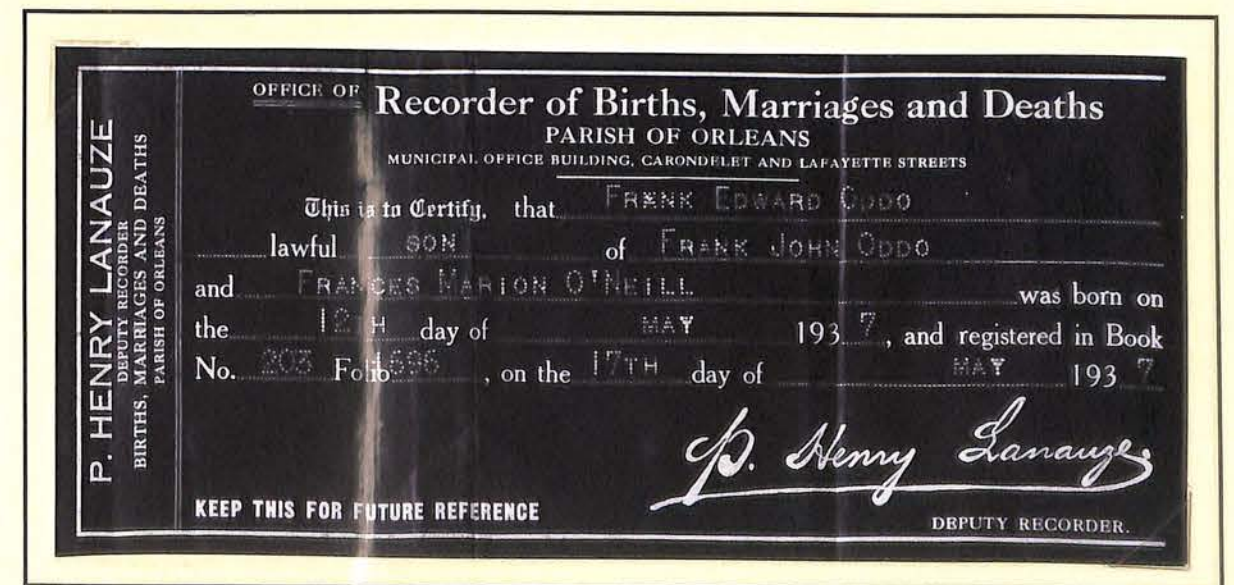


Chicago & New Orleans N.D. Railway Post Office

LOUISIANA POSTAL HISTORY



Coil Stamp Issue of 1923-29.
Scott No. 597, 1¢ Franklin (green).
Rotary press printing, perforated 10 vertically.
Issued July 18, 1923.
Posted on May 12, 1937 in New Orleans.



Photocopy of this collector's birth certificate.

LOUISIANA POSTAL HISTORY



Domestic Paid Reply Postal Card Issue of 1915

Scott No. UY7r; U.S. Postal Card Catalog No. MR 14
1¢ Martha Washington (green) on cream colored paper.

Posted in Shoreline, Louisiana on May 12, 1937.

(Note: This collector's birthday.)

Shoreline was a very small community in Caddo Parish, which is located in the very northwestern corner of the state. The post office was in operation from March 25, 1937 to July 16, 1940. The Postmistress was Mrs. Sady Bradshaw.

LOUISIANA POSTAL HISTORY



Post Cards - 1937

Above Right:

Band Stand and Casino, City Park, New Orleans, La.

One of the joys of going to City Park on Sunday was to listen to the band concert and, if one stayed until dark, to view the free moving pictures, which were projected on a screen at the bandstand.

Unmailed "linen" post card published by:

A. Hirschwitz, New Orleans, La.

Genuine Curteich-Chicago "C. T. Art-Colortone" Post Card

§

Below Right:

FLORIDA PARISH CHARITY HOSPITAL, INDEPENDENCE, LA.

Unmailed "linen" post card published by:

-----LOUISIANA-MISSISSIPPI NEWS CO., MCCOMB, MISS. -----
NATURAL COLOR POST CARD MADE IN U. S. A. BY E. C. KROPP CO., MILWAUKEE, WIS. -(JEL)

Although the above is captioned "Florida Parish," to the best of my knowledge, no such political entity ever existed. Independence was originally in Livingston Parish until the creation of Tangipahoa Parish, circa 1890. The term "Florida Parishes" was in common use in the mid-20th century to designate several parishes (including Tangipahoa) in southeast Louisiana.

Of primary importance to this collector, however, is the fact that my father, Frank J. Oddo, was born in Independence, Louisiana on September 13, 1911.

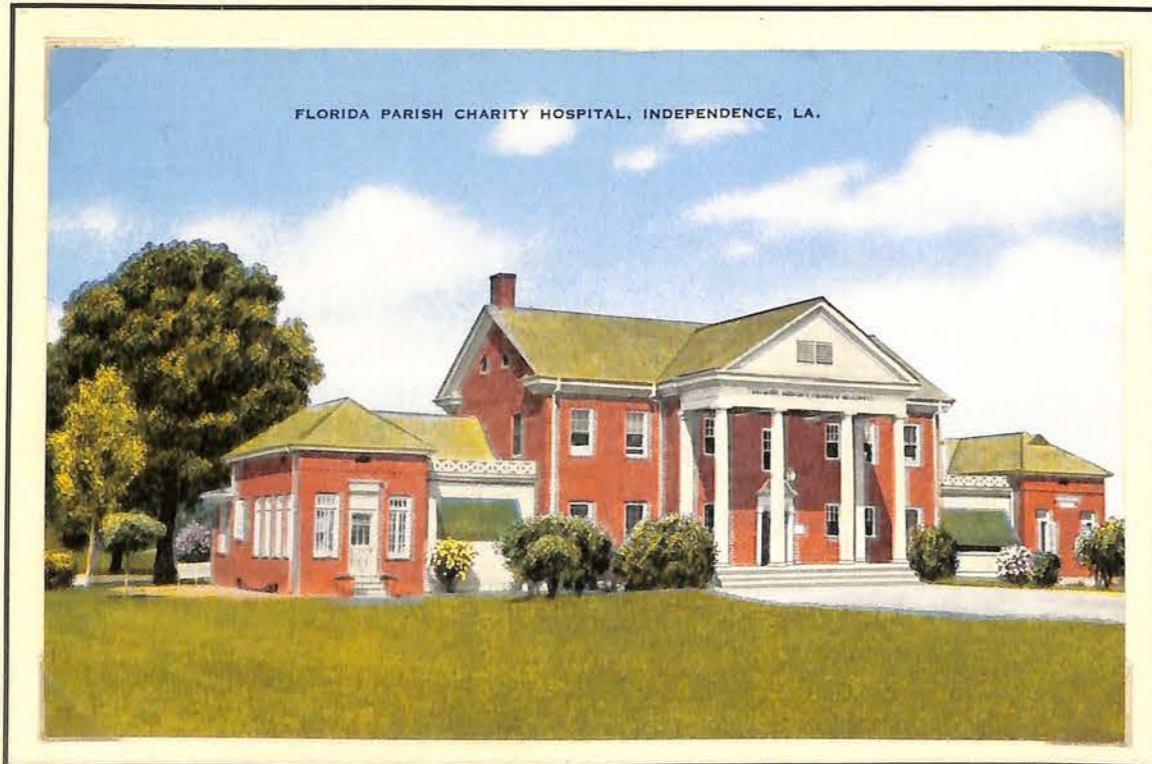
LOUISIANA POSTAL HISTORY

Post Cards - 1937



Band Stand and Casino, City Park, New Orleans, La.

Band Stand and Casino, City Park, New Orleans, La.

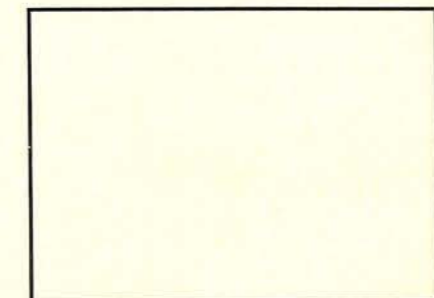
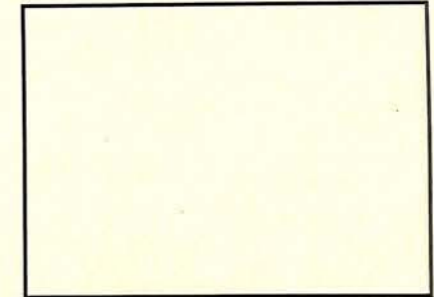


FLORIDA PARISH CHARITY HOSPITAL, INDEPENDENCE, LA.

Florida Parish Charity Hospital, Independence, La.

LOUISIANA STATE REVENUE STAMPS

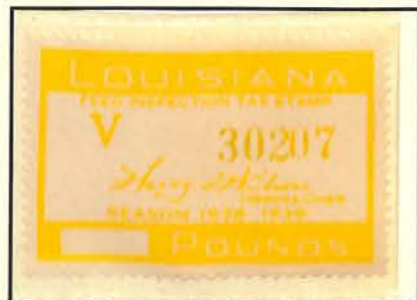
Feed Inspection Tax Stamps



1936 - 1937

LOUISIANA STATE REVENUE STAMPS

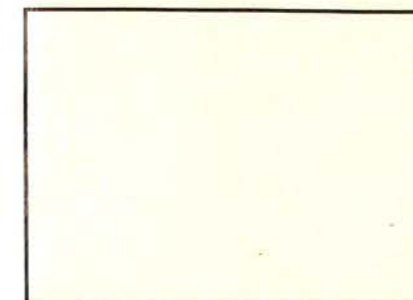
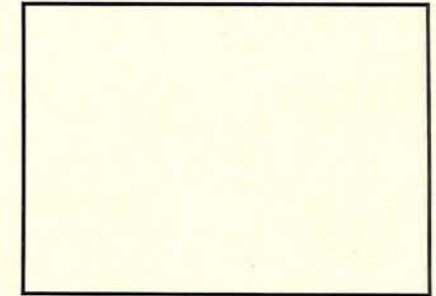
Feed Inspection Tax Stamps



1938 - 1939

LOUISIANA STATE REVENUE STAMPS

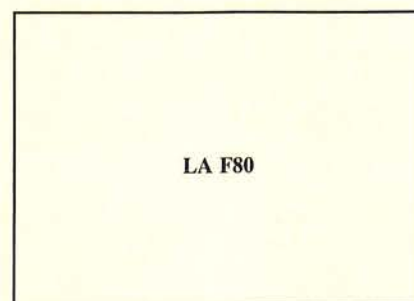
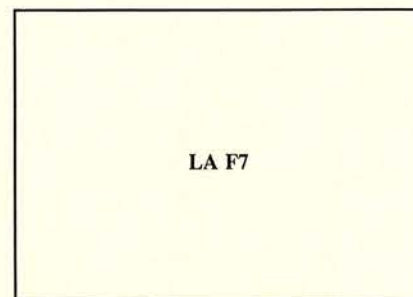
Feed Inspection Tax Stamps



1940 - 1941

LOUISIANA POSTAL HISTORY

State Revenue Stamps Feed Inspection Tax Stamps



1941 - 1942

LOUISIANA STATE REVENUE STAMPS

Feed Inspection Tax Stamps



1939 - 1940

STAPLES®

LOUISIANA POSTAL HISTORY

State Revenue Stamps
Feed Inspection Tax Stamps



1935 - 1936

LOUISIANA POSTAL HISTORY

Ship's Cover
U. S. S. Wyoming - New Orleans
October 12, 1934



The cover is franked with a plate pair of Scott 728.

EVERETT
PVH119 T3

LOUISIANA POSTAL HISTORY



Cover with illustrated corner card franked with Sc 732 and posted in De Ridder, Louisiana, October 11, 1934.

De Ritter, in southwest Louisiana, was known as Miersburg when it was in Calcasieu Parish. The name was changed to that of a railroad magnate when it became the seat of the newly formed Beauregard Parish in 1899 and the post office was established.

In 1934, the population was 3700, large enough to support the
CITY SAVINGS BANK AND TRUST CO.
IN THE HIGHLANDS OF LOUISIANA.

LOUISIANA POSTAL HISTORY



Scott No. 720 3¢ Washington by Gilbert Stuart (deep violet) on a philatelic cover commemorating the 72nd Anniversary of the Capture of New Orleans during the Civil War.

LOUISIANA POSTAL HISTORY

Louisiana Post Cards



Faucheux's Hotel

Tourist Rooms—Restaurant—Bar—Rest Rooms
Lutcher, Louisiana

. . . and a 1940 Ford Tudor Sedan . . .

LOUISIANA POSTAL HISTORY



Cover signed by Richard W. Leche, Governor of Louisiana, and franked with Scott 836. Posted February 2, 1939 in Baton Rouge, Louisiana. The label states the population of Louisiana was 2,127,000. By 1940, however, it was up to 2,363,880, and by the year 2000 it had reached 4,468,997.

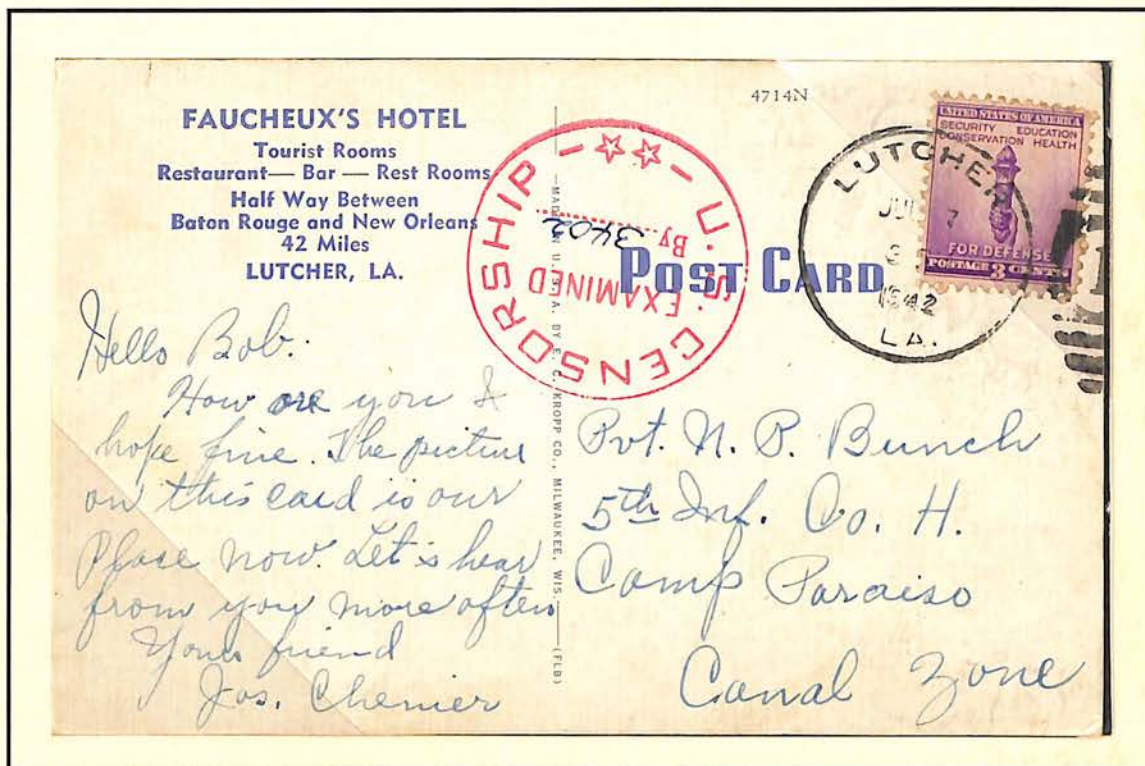


GOV. RICHARD W. LECHE

In August 1937, Gov. Leche, State Highway Commission Chairman L. P. Abernathy and George B. Younger of the Younger Motor Truck Company in Alexandria devised a scheme to defraud the state of Louisiana in the sale of 138 International Harvester trucks at prices higher than ordinary in order to realize profits for themselves. The scheme was carried out in October 1937. A second fraud involving the sale of an additional 95 trucks took place in July 1938. Gov. Leche's share of the ill-gotten gains was \$31,000. He was convicted of mail fraud in 1940 and sent to prison.

(Research by Joan Holub of the U. S. Department of Justice.)

LOUISIANA POSTAL HISTORY
Louisiana Post Cards



Reverse of Fauchaux's Hotel Photo Card.

Franked with Scott 901, and carrying a wartime censor's strike, probably applied at
Camp Paraiso in the Canal Zone.

Posted in Lutcher, Louisiana on July 7, 1942.

LOUISIANA POSTAL HISTORY



Presidential Issue of 1938

Scott 806, 2¢ John Adams (rose carmine) issued June 3, 1938.
Rotary press printing by the Bureau of Engraving and Printing.
Plates of 400 subjects in four panes of 100 each.

Philatelically prepared cover commemorating the New Orleans Post Office and Federal Building franked with a plate single of Scott 806. Apparently the cover was originally posted on September 21, 1939 and the cachet was applied on or after September 9, 1940.

LOUISIANA POSTAL HISTORY



Swedish-Finnish Tercentenary Issue Scott 836, 3¢

"Landing of the First Swedish and Finnish Settlers in America,"
by Stanley M. Arthurs (red violet).

Special Delivery Issue of 1927-31
Scott E15, 10¢ Motorcycle (gray violet)

Air mailed commercial cover marked:
"Special Delivery Fee Paid, 10 cents"
and
"Fee Claim . . . of First . . ."

Posted in New Orleans on January 24, 1939.

LOUISIANA POSTAL HISTORY

New Orleans Precancels



Series of 1922-25



Series of 1923-26



Series of 1938



Issue of January 27, 1939

LOUISIANA POSTAL HISTORY

New Orleans Precancels



Series of 1922-25



Series of 1930



Issue of 1933

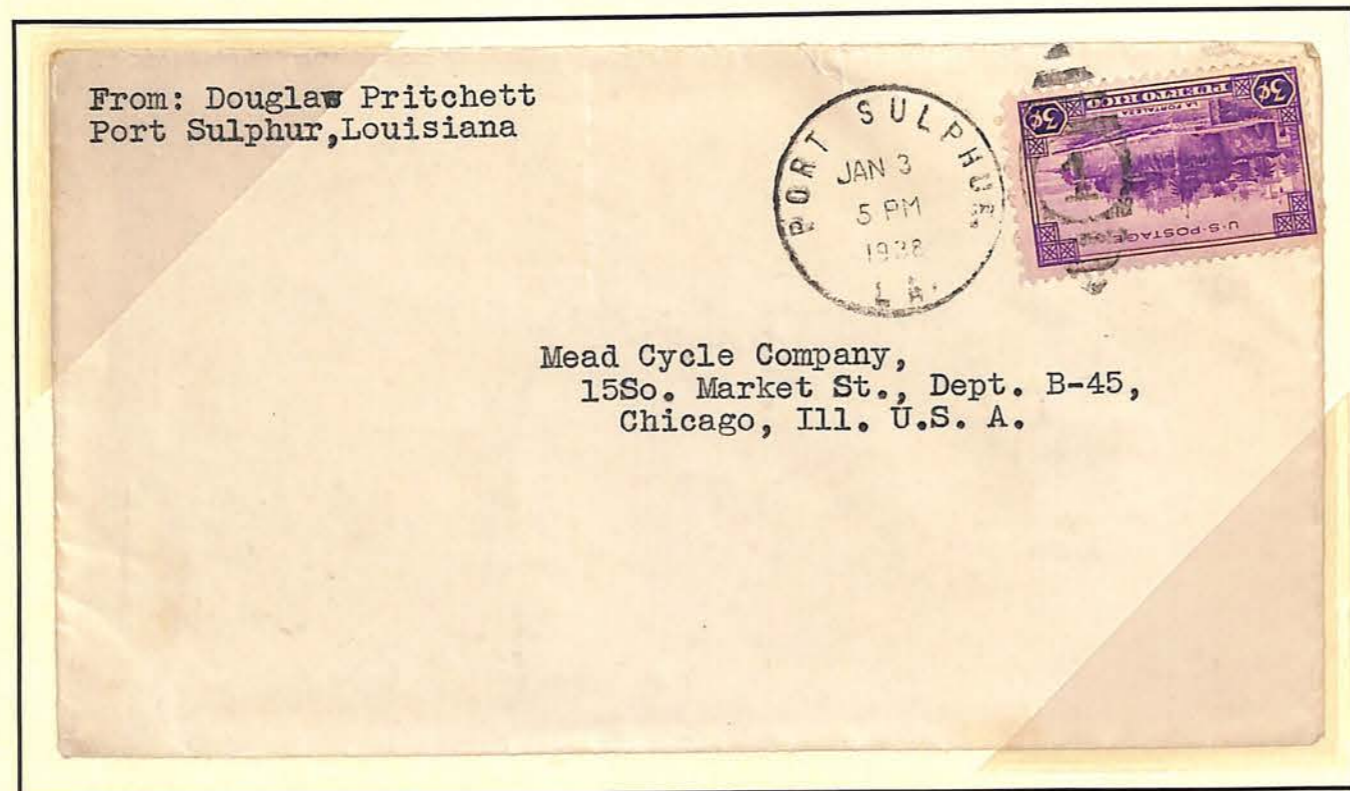


Series of 1938



Issue of January 20, 1939

LOUISIANA POSTAL HISTORY



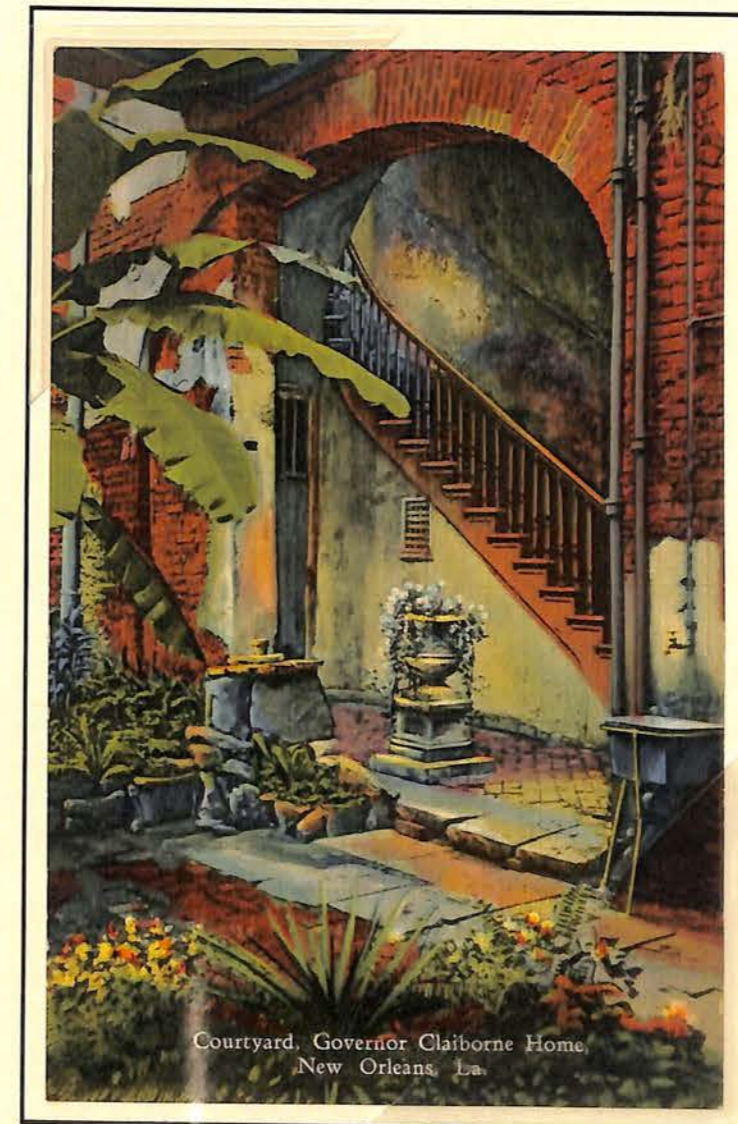
Puerto Rico Territorial Issue of November 25, 1937.
Scott 801, 3¢ La Fortaleza, San Juan (bright violet).
Rotary press printing by the Bureau of Engraving and Printing.
Plates of 200 subjects in four panes of 50 each.
Unwatermarked, perforated 10½ x 11.

Posted in Port Sulphur, Louisiana on January 3, 1938.
Machine cancelled with a 30-mm single circle date stamp. It is not known
what the numeral "1" within the oval killer identifies.

Port Sulphur is in Plaquemines Parish at the southeastern tip of the state. The post
office was only established in 1934. The first postmaster
was Paul W. Arnolie.

LOUISIANA POSTAL HISTORY

"Linen" post cards published in 1937-38.



Above: *Courtyard of Governor Claiborne Home, showing old stairway, banana trees, flowers, etc. New Orleans, La. Published by Curteich.*

§

Upper Right: *United States Post Office covers an entire square block, across from which is a partial scene in beautiful Lafayette Square. Published by Curteich.*

§

Lower Right: *This is one of the curiosities of the type of work done in cast iron in old New Orleans before the Civil War. Published by E. C. Kropp Co., Milwaukee, Wis. Posted February 1, 1938.*

LOUISIANA PAPER COLLECTIBLES
Philatelic Cinderellas



Crescent City Stamp Club
Philatelic Society of New Orleans

ANNUAL PHILATELIC EXHIBITION
NEW ORLEANS
FEB. 4-5-6, '38

LOUISIANA POSTAL HISTORY



Stamped Envelope Issue of 1907-16

Scott U400, Die 1, 1¢ Franklin (green). Printed by Mercantile Corporation of Dayton, Ohio, July 1, 1907 - June 30, 1915 (2 contracts). Additionally franked with Scott 300, 1¢ Franklin (green).

The above specimen is cataloged by Thorpe-Bartels as Die 111 (A) in which the "O" of "ONE" is circular.

§

Posted in Bernice, Louisiana on May 10, 1908. This town is in Union Parish, and was named by the town founder C. C. Henderson for the daughter of Allen Lowery at whose home he stayed. The town's population was approximately 780 in 1908.

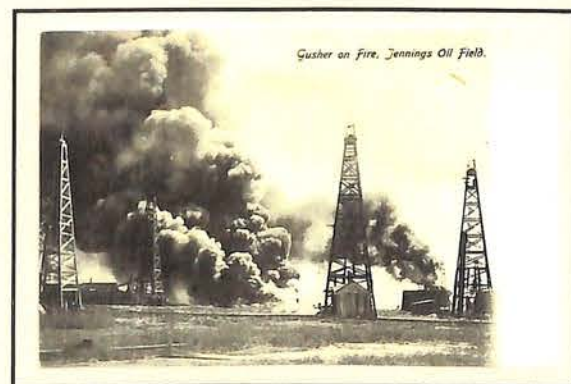
LOUISIANA POSTAL HISTORY



Regular Issue of 1902-03
Scott No. 300, 1¢ Franklin (blue green).
Perforated 12.

Postmarked February 5, 1908 with the Jennings, Louisiana machine flag cancel.

Jennings was in Calcasieu Parish, in southwestern Louisiana, when this card was posted.
The population numbered approximately 2000 in 1908.



Gusher on Fire, Jennings Oil Field.

A facsimile of the photo side of the above card. Printed in Germany.
Published by Rosin & Co., Phila. and New York.

LOUISIANA POSTAL HISTORY Canal Street Post Cards



Canal Street, New Orleans, La.

Published by Lipsher Specialty Co., 320 Magazine St., New Orleans circa 1900. Unused.



Raphael Tuck & Sons Post Card Series No. 2108 "New Orleans, La."
Art Publishers to Their Majesties the King and Queen.
Posted in New Orleans April 4, 1908

LOUISIANA POSTAL HISTORY



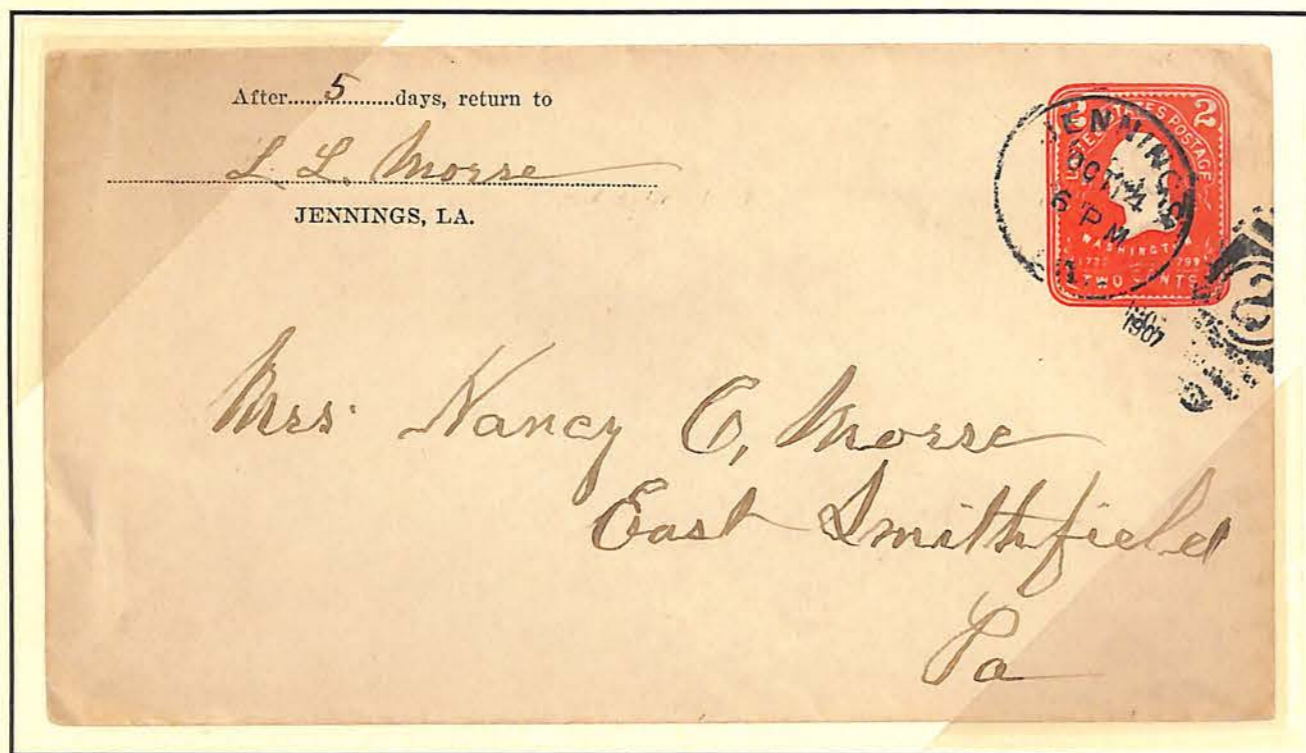
Post card franked with Scott No. 300 mailed in Lutchet, Louisiana to Lees Creek, Louisiana on April 6, 1908.

Lutchet, in Saint James Parish, had a population of approximately 1000 in 1908. The post office was established in 1871. Lees Creek (formerly Lee's Creek) is in Washington Parish. Its post office was in operation from December 1, 1895 through September 30, 1918.

LOUISIANA POSTAL HISTORY



LOUISIANA POSTAL HISTORY



Postal Stationery Issue of 1904.

Scott No. U395, Re-cut Die; Thorpe 1924, Die 110.
2¢ Washington (carmine) on white paper.
Printed by Hartford Manufacturing Co., Hartford, Conn.

Posted in Jennings on October 14, 1907. Jennings, in southwestern Louisiana's Jefferson Davis Parish, had a population of approximately 1900 in 1907.

LOUISIANA POSTAL HISTORY



Postal Stationery Issue of 1904.

Scott No. U395, Re-cut Die; Thorpe 1924, Die 110.
2¢ Washington (carmine) on white paper.
Printed by Hartford Manufacturing Co., Hartford, Conn.

Posted in Rayville on August 6, 1907. Rayville, in northeast Louisiana's Richland Parish, had a population of approximately 860 in 1907. Also known as "Little Creek" and "Raysville," the town was named for its first postmaster, James S. Ray.

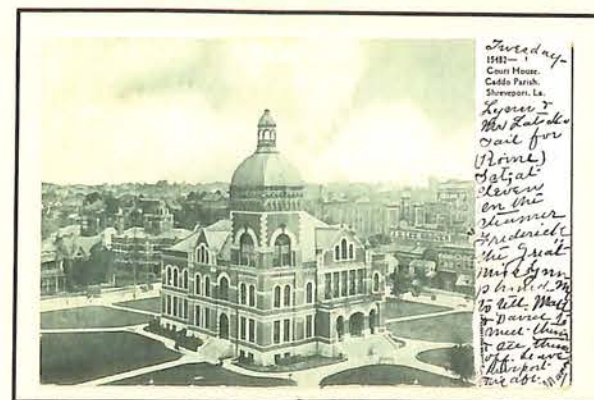
LOUISIANA POSTAL HISTORY



Regular Issue of 1902-03
Scott No. 300, 1¢ Franklin (blue green).
Perforated 12.

Postmarked April 9, 1907 with the Shreveport, Louisiana machine flag cancel.

Shreveport is in Caddo Parish, in northwestern Louisiana.
The population numbered approximately 26,000 in 1907.



Court House, Caddo Parish, Shreveport, La.

A facsimile of the photo side of the above card.
Published by Souvenir Post Card Co. of New York.

LOUISIANA POSTAL HISTORY



Postal Stationery Issue of 1904.

Scott No. U395, Re-cut Die; Thorpe 1924, Die 110.
2¢ Washington (carmine) on white paper.

Printed by Hartford Manufacturing Co., Hartford, Conn.

Posted in New Orleans on January 31, 1907. Machine cancelled at Station 1 with a 20 mm single circle date stamp. Additionally franked with Scott 302, 3¢ Jackson (bright violet) to pay the international rate to Bremen, Germany. Receiving marks on the rear of the cover indicate that it took 15 days to reach its destination.

The meaning of the 15 mm
circle containing

B. f. B.
Berlin

is unknown at this time.

LOUISIANA POSTAL HISTORY



A massive Oak, Mandeville, La.

LOUISIANA POSTAL HISTORY



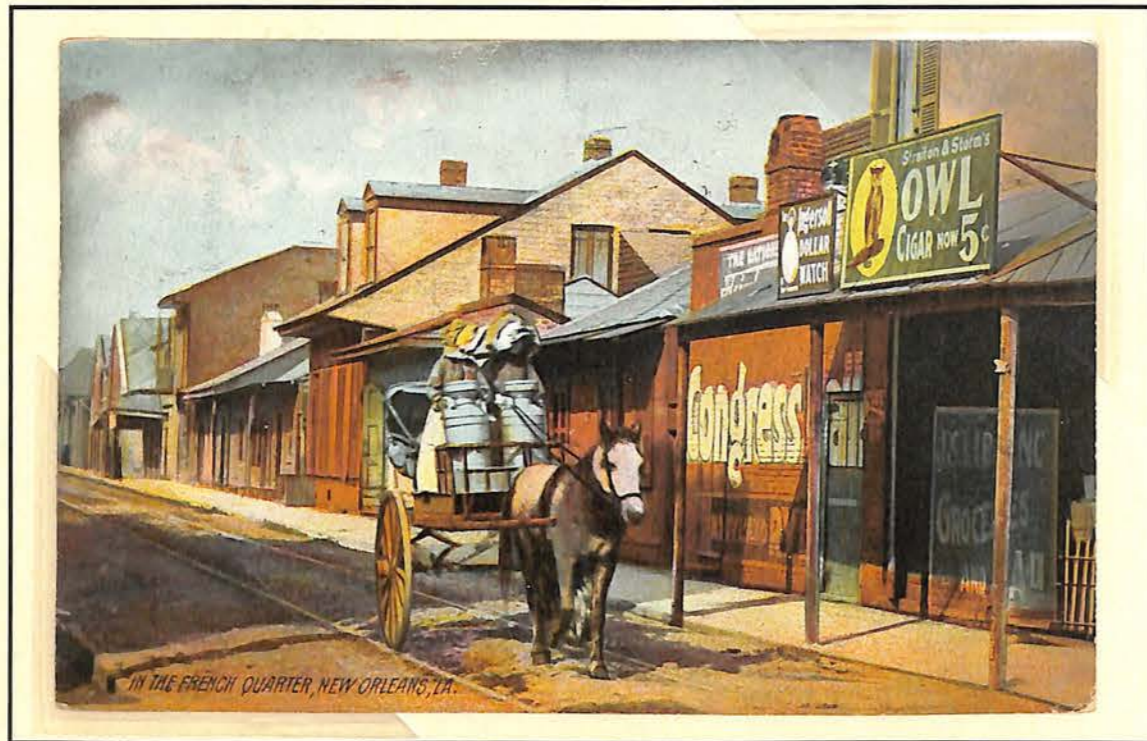
Postal Stationery Issue of 1904.

Scott No. U395, 2¢ Washington (carmine) on white paper.
The 1903 2¢ Washington die was re-cut for this issue, resulting in 143
difficult to distinguish varieties.

Printed by the Hartford Manufacturing Co., Hartford, Connecticut.

Posted in New Orleans on May 12, 1905.
Additionally franked with Scott 300 and 319 to pay the
international rate to Germany.

LOUISIANA POSTAL HISTORY
New Orleans Post Cards



In The French Quarter, New Orleans, La.
Published by Rotograph Co., printed in Germany. Posted on June 16, 1908.



Birds-Eye-View Looking South, New Orleans, La.
Published by S. H. Kress & Co. Posted on May 28, 1914.

LOUISIANA POSTAL HISTORY



Scott 300 on handmade postal cut from leather and mailed 4:30 PM, Tuesday, November 27, 1906 in New Orleans.

The card was first received 10 AM, Sunday, December 2 in La Jolla, California. For some reason it was again date stamped 4 PM. On the obverse, it was date stamped 5 PM, Monday, December 3 in San Diego. It was also date stamped at an indeterminate time in La Mesa, California!

Did Fräulein Schwartz in La Jolla ever receive her Thanksgiving greeting?

§

In 1906, Thanksgiving was November 29. The holiday was traditionally celebrated on the *last* Thursday in November, but it was changed to the *fourth* Thursday by an act of Congress in 1941.

LOUISIANA POSTAL HISTORY



Handmade "Thanksgiving" postal cut from leather and mailed
4:30 PM, Tuesday, November 27, 1906 in New Orleans.

The card was first received in La Jolla, California 10 AM, Sunday, December 2, 1906.
On this side, however, it was date stamped 5 PM Monday, December 3 in
San Diego. Note the flag cancel.

LOUISIANA POSTAL HISTORY



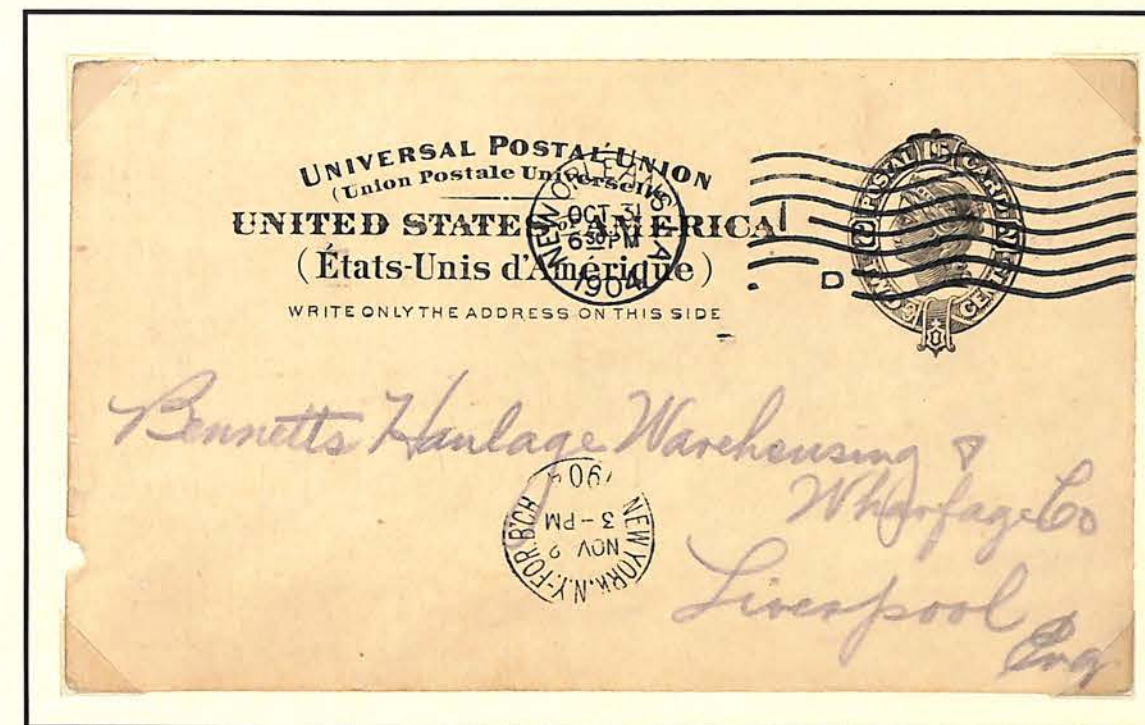
Louisiana Purchase Exposition Issue
St. Louis, Missouri, April 30 - December 1, 1904
Scott No. 324, 2¢ Thomas Jefferson (carmine)

Printed by the Bureau of Engraving and Printing, Washington, D.C.
Posted in New Orleans, Louisiana on September 24, 1904 exhibiting a 25 mm Station C
single circle date stamp. Cancelled with an oval duplex killer.



A 200 percent enlargement of this cover's franking.

LOUISIANA POSTAL HISTORY



Postal Card Issue of 1898
International Card

Scott No. UX16; U.S. Postal Card Catalog S20
2¢ black on buff.

Printed by Albert Daggett, Piedmont, West Virginia

Posted in New Orleans on October 31, 1904; addressed to Liverpool, England via New York.

The reverse of the card is a printed receipt from
Morgan's Louisiana & Texas Railroad and Steamship Co.

LOUISIANA POSTAL HISTORY



Issue of 1903

2¢ Washington (carmine), Scott No. 319, Type I.

Posted in Harvey, Louisiana on June 29, 1904.

Harvey is located in Jefferson Parish on the West Bank of the Mississippi River across from New Orleans. The population numbered approximately 1000 when the local post office was established in 1890. It was named for Captain Joseph Hale Harvey, the son-in-law of N. N. Destrehan, a prominent local politician.

LOUISIANA POSTAL HISTORY



Issue of 1903

Scott No. 319, Type I, 2¢ Washington (carmine).

Printed by the Bureau of Engraving and Printing.

Posted in New Orleans, Louisiana on February 17, 1904 exhibiting a 25 mm Station B single circle date stamp. Cancelled with an oval duplex killer.



LOUISIANA POSTAL HISTORY

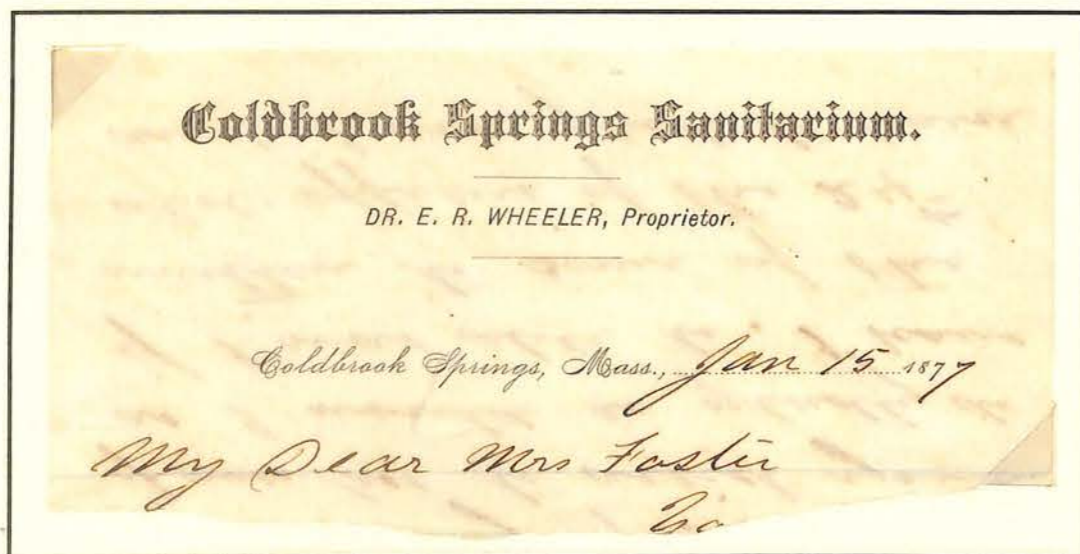


Postal Stationery Issue of 1874-86.
Scott No. U163; Thorpe 552, Die 57(B)
3¢ Washington (green) on white paper.

Printed by Plimpton Manufacturing Co., Hartford, Connecticut.

Posted in New Orleans, Louisiana on November 10, 1876.

Note the fancy cork cancellation, and the blue date stamp, the town name of which is indistinguishable.



Part of the letter contained within the cover.

LOUISIANA POSTAL HISTORY



Postal Stationery Issue of 1874-76.

Scott No. U165; Thorpe 549, Die 57 (B)
3¢ Washington (green) on cream colored paper.

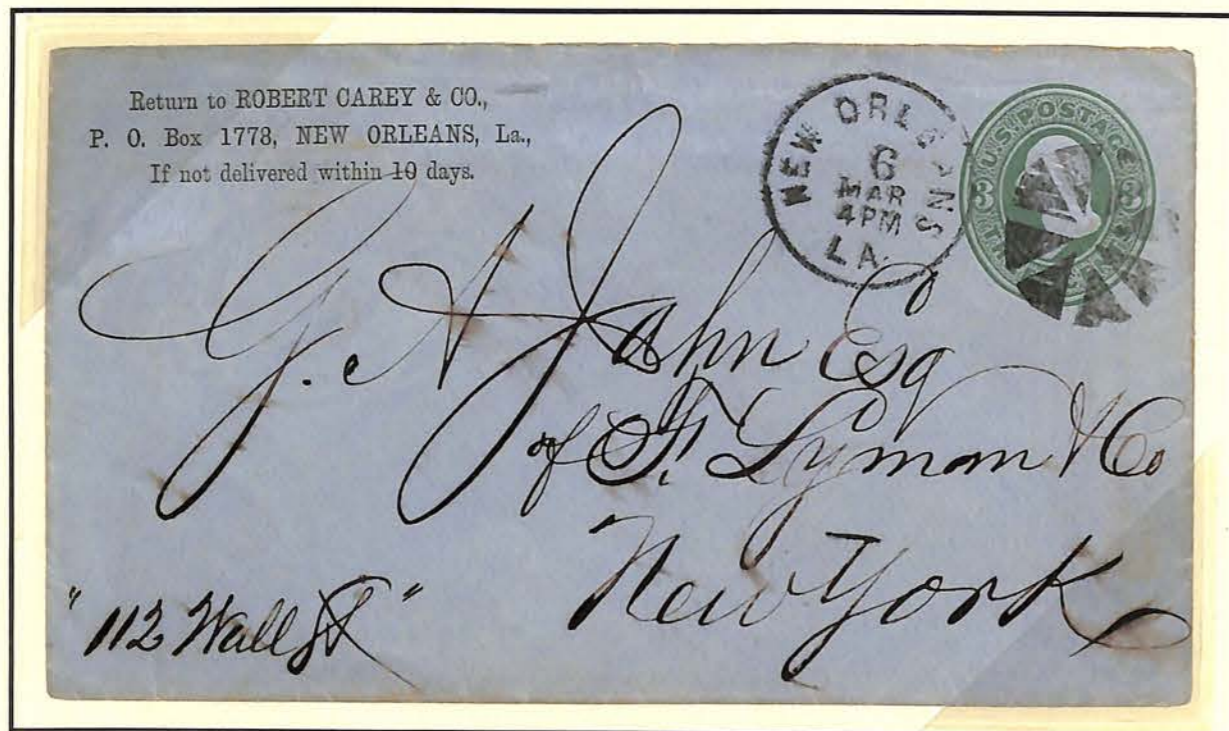
Printed by Plimpton Manufacturing Co., Hartford, Connecticut

Posted in Clinton, Louisiana on November 10, circa 1876.

Note the star cancellation, and that the town name in the postmark is 180° out of sync with the date (which is in correct alignment relative to the cancellation).

Clinton is in East Feliciana Parish in the central part of the state. It was named for DeWitt Clinton, the famous governor of New York. Its population in 1876 was approximately 1100.

LOUISIANA POSTAL HISTORY



Postal Stationery Issue of 1874-86.

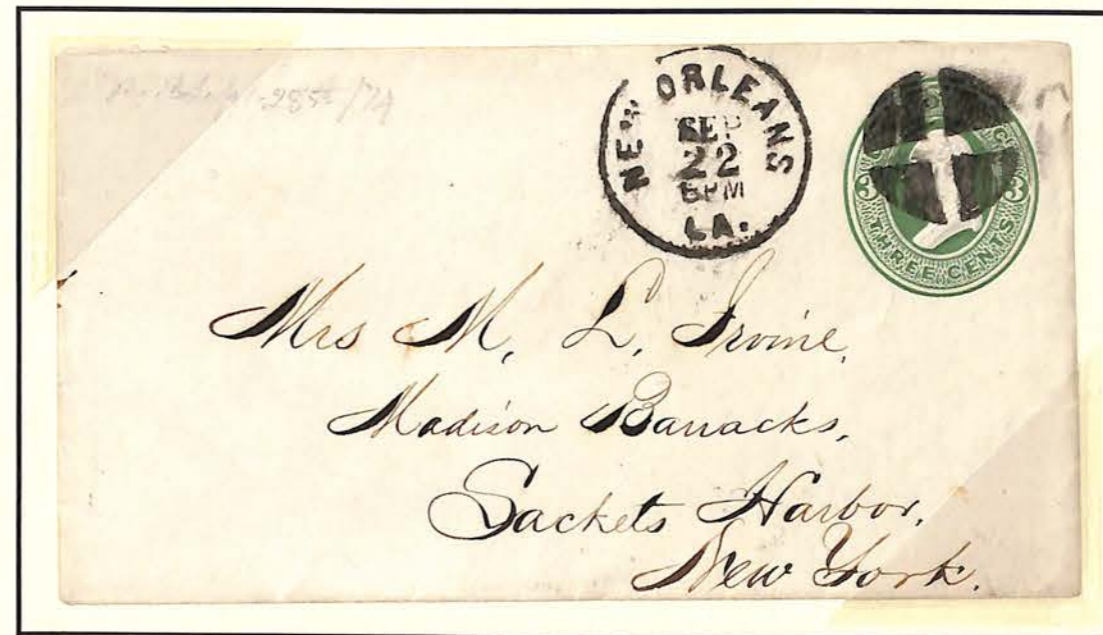
Scott No. U166, Thorpe 561, Die 57 (B)
3¢ Washington (green) on blue colored paper.

Printed by the Plimpton Manufacturing Co., Hartford, Connecticut.

Posted in New Orleans on March 6, circa 1876 and cancelled with a variation of the popular "pinwheel" carved cork killers.

Note that the phrasing in the 27 mm circular date stamp (6 MAR 4 PM), is not commonly seen in New Orleans cancels.

LOUISIANA POSTAL HISTORY



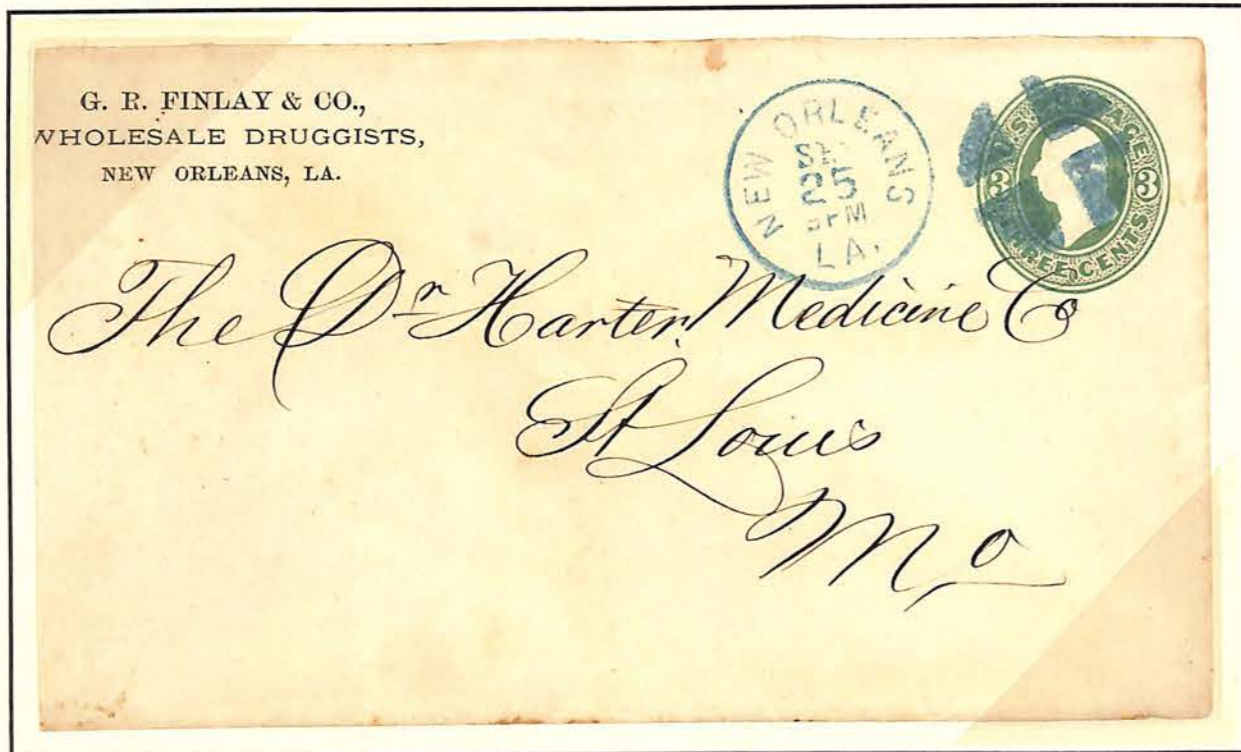
Postal Stationery Issue of 1870-71

Scott U82, Thorpe 243, Die 37
3¢ Washington (green) on white paper.
Printed by George H. Reay, Brooklyn, N. Y.

Posted in New Orleans on September 22, 1874

The engravings in this issue are finely executed.

LOUISIANA POSTAL HISTORY



Postal Stationery Issue of 1874-86.
 Scott No. U165; Thorpe-Bartels No. 573, Die 57 (B).
 Size 5 (89 x 160 mm); Knife 43 (1874).
 Watermark No. 2.

3¢ Washington (green) on cream colored paper.
 Manufactured by Plimpton Mfg. Co., Hartford, Conn. in 1874.

The letter was posted in New Orleans on September 25, circa 1874-75 where it received a fancy cancellation and (presumably) the Huber 109-12 postmark in blue. It was addressed to St. Louis, Missouri and arrived on September 27.



Although the Huber 109-12 cds is listed as 25 mm in diameter, and the cover's cds measures 27 mm, it is assumed that "ink-spread" accounts for the dimensional variation. The fancy cancel is of the crossroads design.

LOUISIANA POSTAL HISTORY



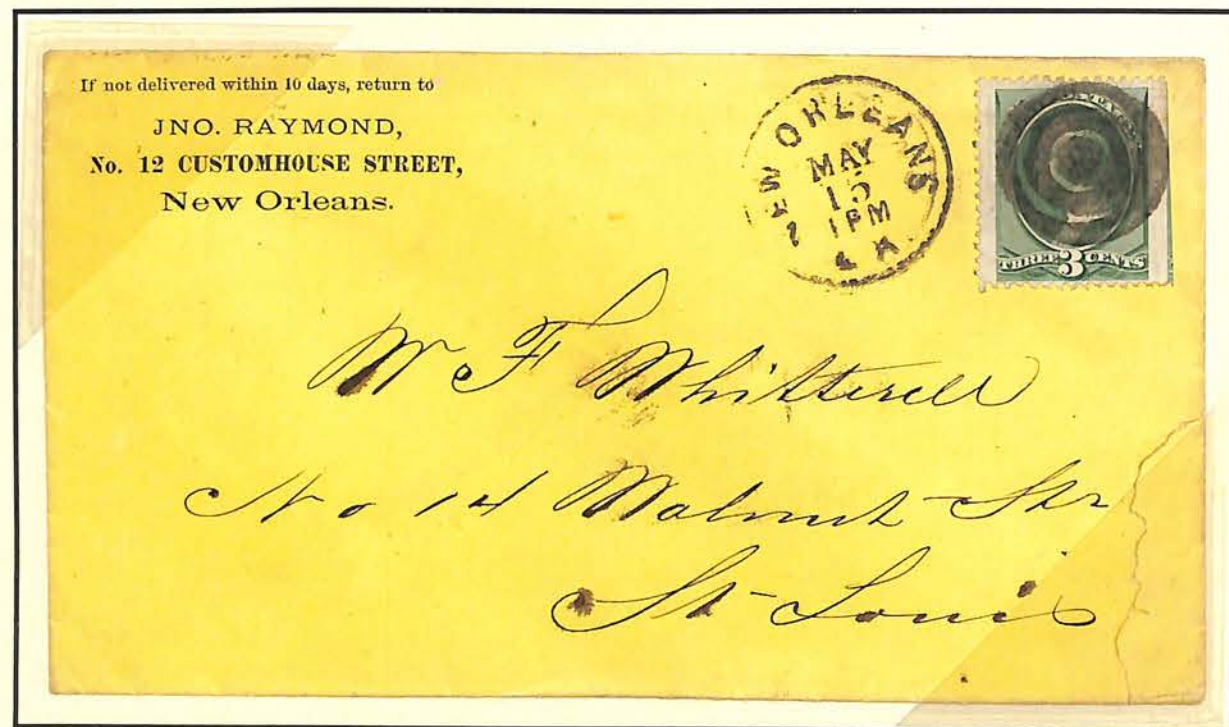
Scott U165, 3¢ Washington (green on cream colored paper).



Scott U144, 2¢ Jackson (vermilion on cream colored paper).

Both covers are from the Issue of 1875-86 supplied by Plimpton Mfg. Co. of Harford, Connecticut. Both were mailed to Ferdinand Marks, Esq., an attorney in the firm of Lehman, Abraham & Co.. Both carry fancy cancels, and both were carelessly opened. Fortunately, the stamp and cancel were spared in each case. Exact mailing date is unknown, but probably between 1874 and 1876. (Curiously, the covers were acquired by this collector from different sources at different times.)

LOUISIANA POSTAL HISTORY



Issue of 1873

Printed by the Continental Bank Note Company.

Scott No. 158, 3¢ Washington (green)

Cover with multi-font corner card posted in New Orleans on May 15, circa 1875 cancelled with a target design "cork killer."

The Issue of 1873 incorporates the designs of the 1870-71 Issue, but with secret marks on the values from 1¢ to 15¢. The object of the marks was to provide a simple and positive proof that these stamps were produced by Continental and not by their predecessors. The secret mark on No. 158 is the heavier shading under the upper tail of the left ribbon.



Issue of 1870-71 (Sc. 147) produced by the National Bank Note Co.



Issue of 1873 (Sc. 158) produced by the Continental Bank Note Co.

LOUISIANA STATE REVENUE STAMPS

Law Stamps
(circa 1874 to 1894)



LOUISIANA POSTAL HISTORY



Postal Stationery Issue of 1870-71.

Scott No. U82, Thorpe No. 275, Die 37
3¢ Washington (green) on white paper.
Printed by George H. Reay at Brooklyn, New York.

Posted in New Orleans on April 11, 1872. It was determined to be overweight, and "Due 3¢" was applied in manuscript and paid with Scott No. 147.

Both stamps were canceled with a cork "killer" similar, but not identical, to the crossroads designs in Fig. 113, page 164 of *The Great Mail*.

The contents of the missive, a sales receipt for two bales of cotton, appears overleaf. At that time, baled cotton was selling for 22¢ per pound, equivalent to \$3.13 in 2001.

LOUISIANA POSTAL HISTORY



Postal Stationery Issue of 1870-71.
Scott No. U84; Thorpe-Bartels No. 251, Die 37.
Size 2 (78 x 133mm); Knife 26 (1870).
Watermark No. 2 (USPOD).
3¢ Washington (green) on cream colored paper.
Manufactured by George H. Reay at Brooklyn, New York.

The letter was posted July 29, 1871 aboard a Mississippi River steamboat.

The "N. O. & V." in this relatively rare 25 mm "N. O. & V. M. L. R. R." cds refers to New Orleans & Vicksburg. The "R.R." refers to *River Route* not Rail Road. The "M" and "L" references have not been identified at this time. Germann's *Louisiana Post Offices* lists two New Orleans-Vicksburg (?) entries: (1) A Mississippi River Steamboat operating a 397 mile route from 1851 to 1879 and (2) a Steamboat Route Agent in operation from 1870 to 1882.

LOUISIANA POSTAL HISTORY



Issue of 1861-2

Scott 71, 30¢ Franklin (orange)

This stamp has faults and was repaired, but it was purchased for \$7.59, (five percent of its \$150.00 value in the 2001 edition of the Scott Specialized U.S. Catalogue) because of its "socked on the nose" New Orleans cancellation.



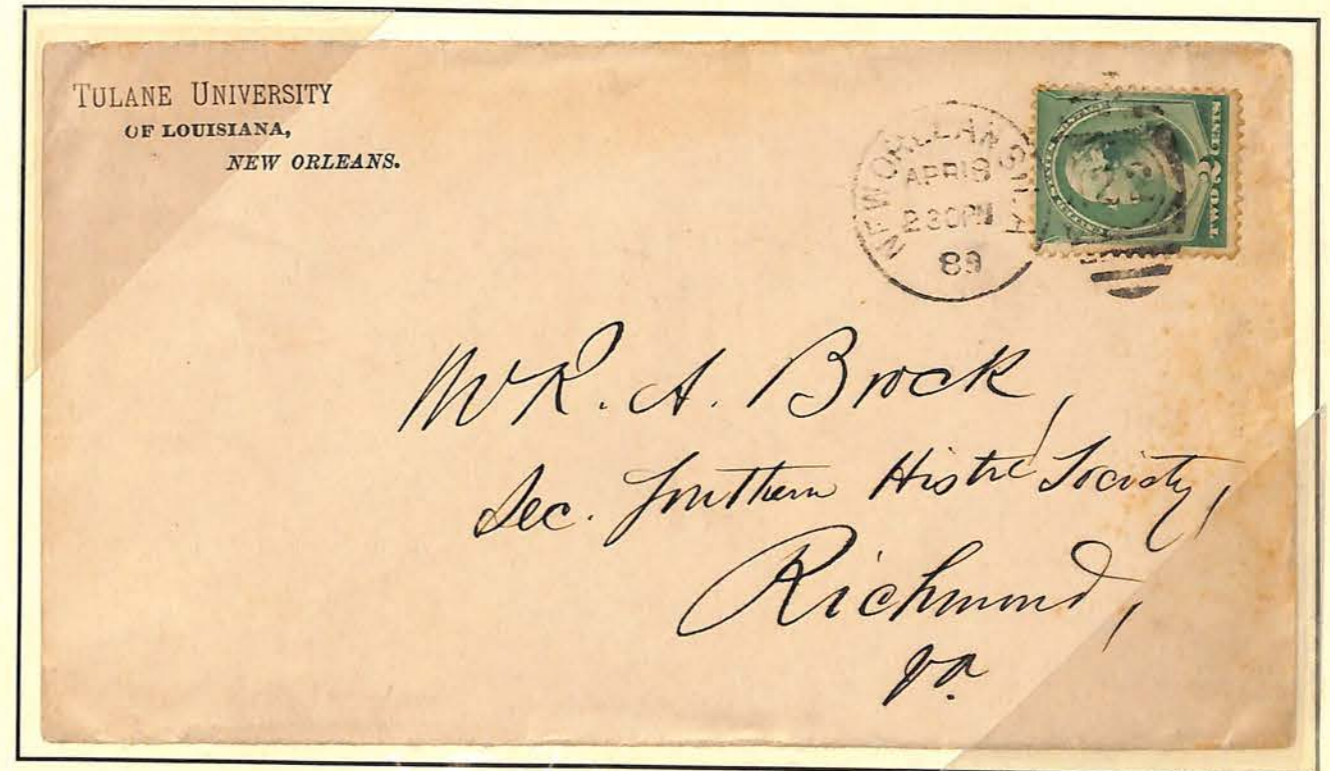
Issue of 1861-72

Scott R81 (Conveyance), \$2 Washington

(This stamp is listed as "red" in the catalogue but appears more "salmon red" under a Philips Daylight Incandescent lamp. The catalogue notes that there are many shade and color variances in this series.)

This revenue was purchased for \$21.50, (86 percent of its \$25.00 value in the 2001 edition of the Scott Specialized U.S. Catalogue) because of its "socked on the nose" Honold & Co., New Orleans cancellation dated December 7, 1870. Note the double line of perforations at the top and bottom of the stamp.

LOUISIANA POSTAL HISTORY



Regular Issue of 1887

Printed by the American Bank Note Company

Scott No. 213, 2¢ Washington (green)

Tulane University cover posted in New Orleans on April 19, 1889.

In 1881, an aloof, retiring, and austere bachelor, Paul Tulane (1801-1887), then eighty years of age, made a decision in his home in Princeton, New Jersey, which was to change the picture of higher education in New Orleans. Tulane had come to New Orleans in 1822 and started a merchandising business, which, with shrewd investments in real estate, had brought him a fortune. In 1882, at his request, a board of administrators was formed in New Orleans, and Tulane deeded real estate worth half a million dollars to it to found an institution of "a higher grade of learning." The question of founding an entirely new university (which Paul Tulane favored) or amalgamating with the University of Louisiana was resolved when a tax decision of the Supreme Court changed Paul Tulane's mind. He and the administrators agreed that they would take over the older institution. Thus, in 1884, a tax-exempt institution was formed, and the name of the university was officially changed to Tulane University of Louisiana in honor of Paul Tulane's beneficent gift.

From New Orleans, A Pictorial History by Leonard V. Huber

Louisiana Postal History



Postal Stationery Issue of 1884-86
Scott No. U277a, Thorp No. 1049a, Die 81(A)

2¢ Washington (brown lake) on white paper. Watermark No. 6.
Printed by the Plimpton Manufacturing Company.

Posted in New Orleans on January 4, 1888.

Determination of color is very difficult. However, the embossed stamp on
this postal stationery closely resembles the color chip on the Card
No. 1 of the *Wonder Color Gauge*.

LOUISIANA POSTAL HISTORY



Postal Stationery Issue of 1887-94.
Scott No. U313; Thorpe 1421, Die 88a.
3¢ Washington (green) on oriental buff paper.

Printed by Plimpton Manufacturing Co., Hartford, Connecticut.

Posted in New Orleans, Louisiana on April 14, 1888

The heavily inked "killer" on this cover tends to blot out several of the distinguishing features so important in determining minor printing varieties. One feature, however, does stand out, and that is the point of Washington's bust is rounded. (Other varieties have a pointed bust.) Inasmuch as the Scott Specialized Catalogue does not go into as much depth as does the Thorp-Bartels Catalogue, further research is always warranted.

The above cover has consequently been identified as Thorpe 1421, Die 88a with a 1954 value in fine, used condition of \$5.00. Extrapolating via Scott's current values of stamped envelope entires, the above cover would have a 2001 Thorp-Bartels Catalogue value of \$160. The reader is, as ever, advised to remember that most of the time, catalogue value is approximately twice that of market value.

LOUISIANA POSTAL HISTORY



Issue of 1887
Scott No. 212, 1¢ Benjamin Franklin (ultramarine).

Printed by the American Bank Note Company on soft, porous paper. Perforated 12. Issued June 11, 1887 with July 7 the earliest known use recorded. A total of 1,325,000,000 were ultimately sold. However, according to Brookman, "It is surprising, in view of the vast quantity of these stamps that were used, how few of them were saved. It has been estimated that less than 1/100th of 1 percent were saved! While this of course is still a common stamp it is surprisingly difficult to find a really superb used copy."

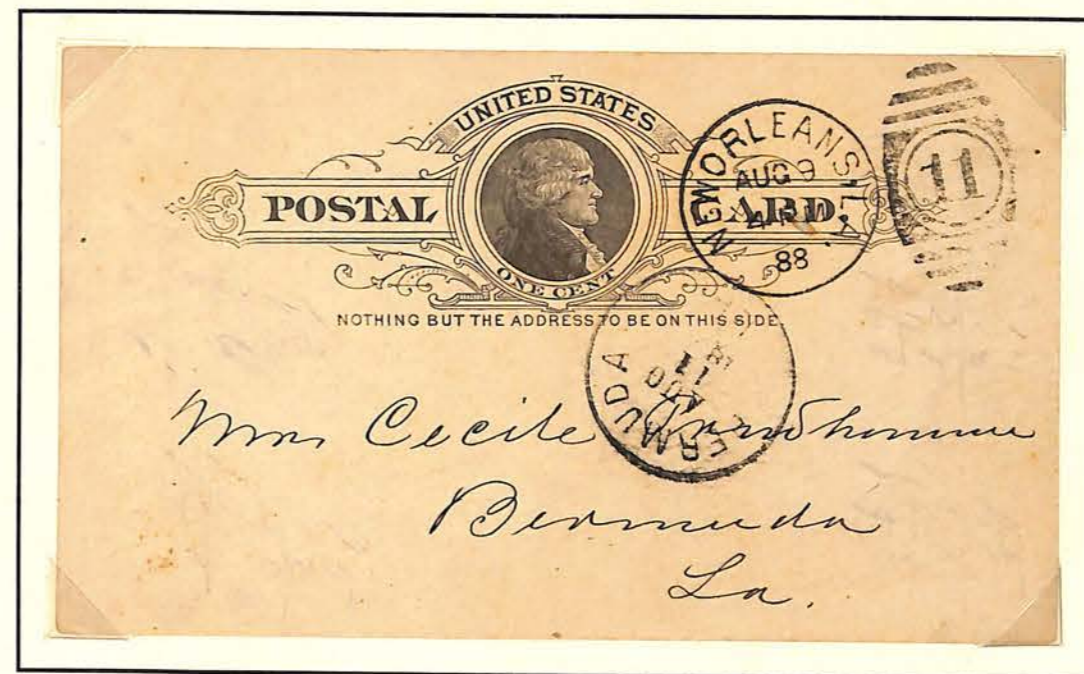
§

Posted in New Orleans on May 23, 1888, and addressed to:

Mr. Anatole Cousin
Bonfouca, Paroisse St. Tammany, La.
(Bonfouca, St. Tammany Parish, La.)

The post office in the village of Bonfouca (an Indian word meaning "bayou residents") was discontinued in 1885 when the population was less than 900. Mail was then delivered to Slidell, about 2 miles east. This cover, however, is backstamped Covington, May 24.

LOUISIANA POSTAL HISTORY



Postal Card Issue of December 1, 1886.

Scott No. UX9; U.S. Postal Card Catalog No. S8
1¢ (Jefferson) on buff colored paper.

Printed and issued in sheets of 80 by Calvin C. Woolworth, New York, NY.

Posted in New Orleans on August 9, 1888.
Received in Bermuda, Louisiana on August 11, 1888.

Bermuda is in Natchitoches Parish. The population was approximately 4000 in 1888. It was named by one of the proponents of a post office who was mowing Bermuda hay as he was asked about a post office name. The post office was discontinued in 1967.

LOUISIANA POSTAL HISTORY



Michel P 14, Type b. 10 Rpf. Reichsadler im Oval (*National Eagle in Oval*)

Posted 21 December 1888 in Plauen, Germany, a loftily situated manufacturing town on the Weisse Elster River. With approximately 90,000 inhabitants in 1888, it was the capital of the Vogtland.

The card was received at Station 4, New Orleans on January 8, 1889, indicating that at that time, a postal journey from eastern Germany through New York took about 17 days.

LOUISIANA POSTAL HISTORY

The World's Industrial & Cotton Exposition, 1884-1885



LOUISIANA POSTAL HISTORY
The World's Industrial & Cotton Exposition, 1884-1885



MINNESOTA DEPARTMENT
GOVERNMENT AND STATE BUILDING
Oliver Gibbs, Jr. Commissioner,
NEW ORLEANS, LA.

Illustrated cover printed by *M. F. Dunn & Bro.* of New Orleans for the
World's Industrial & Cotton Centennial Exposition.

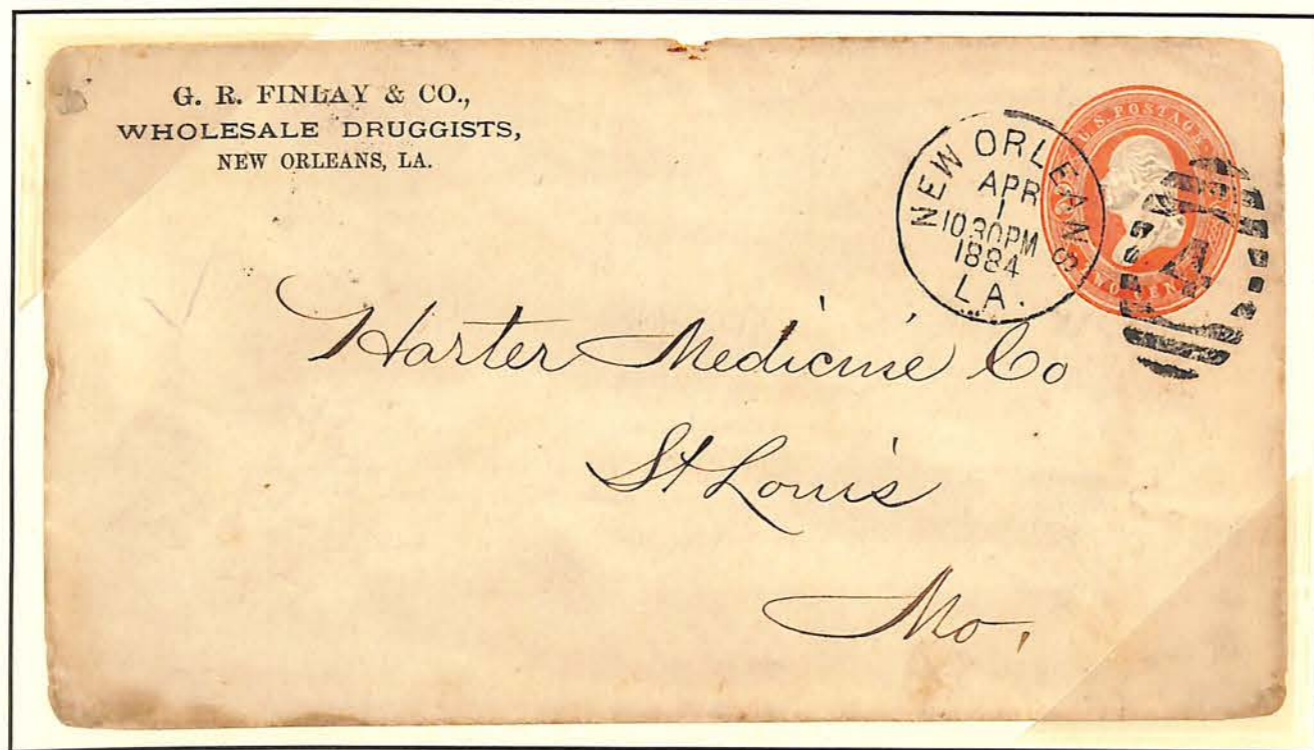
The cover, franked with Sc 210, was mailed on March 10, 1885.

§

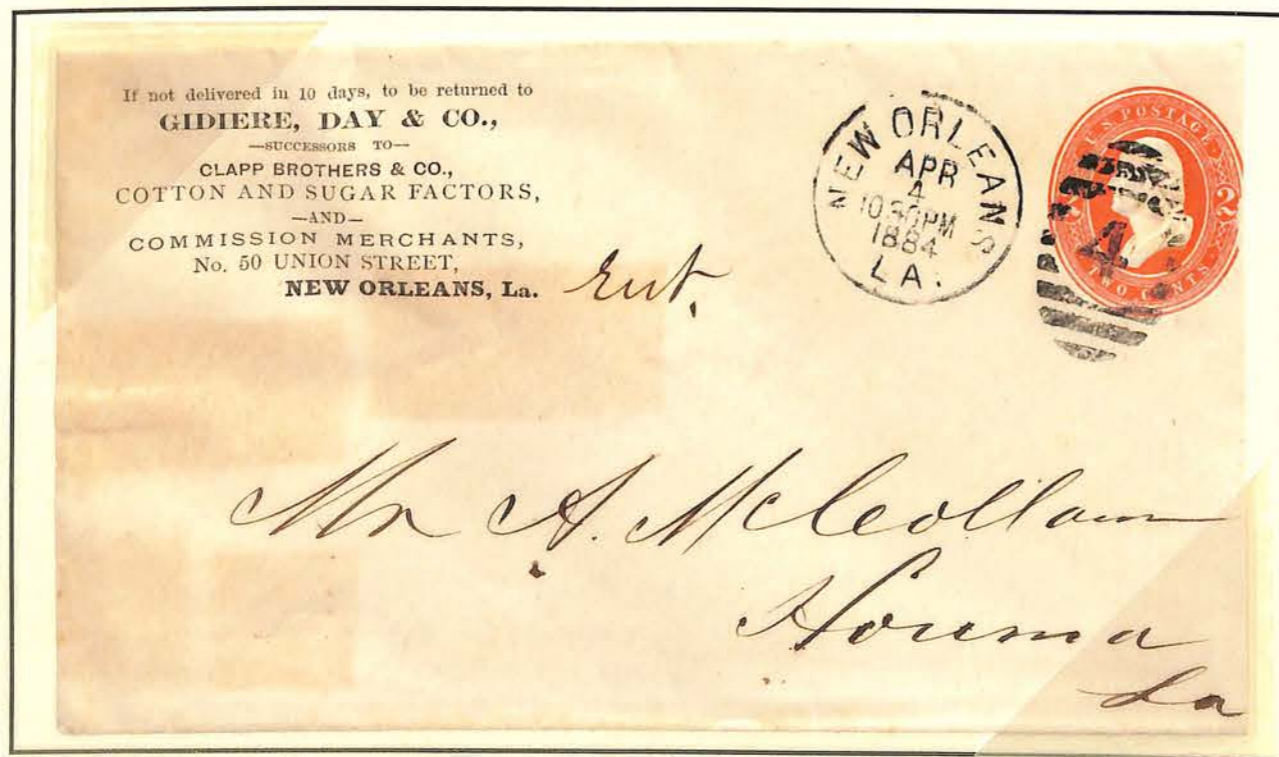
“The nineteenth century in America was noted for its world’s fairs, and the famed Liberty Bell was a part of that tradition between 1885 and 1915. The one-ton, bronze Liberty Bell left Philadelphia in 1885, for the first time since the American Revolution, to be displayed at the World’s Industrial and Cotton Centennial Exposition in New Orleans. For this and its subsequent journeys, the Liberty Bell was mounted on a flatcar provided by the Pennsylvania Railroad, which laid a special spur track to the doors of Independence Hall.”

American Philatelist, January 1999

LOUISIANA POSTAL HISTORY



Wholesale druggist's corner card; posted in New Orleans, April 1, 1884.



Cotton and sugar factors' corner card; posted in New Orleans, April 4, 1884.

LOUISIANA POSTAL HISTORY



Issue of 1881-82. (Designs of 1873 Re-engraved.)
 Scott No. 207, 3¢ Washington (blue green) issued July 16, 1881.
 Printed by the American Bank Note Company.

Posted in New Orleans, September 8, 1883.
 (Six cents paid the foreign postage rate to London.)

LOUISIANA POSTAL HISTORY



Postal Stationery Issue of November, 1883.
Scott No. U231; Thorpe-Bartels No. 923, Die 74.

Size 1 (73 x 134 mm); Knife 46 (1878).

Watermark No. 6 - "USPOD 82" (1882-86).

2¢ Washington (red) on white paper.

Manufactured by Plimpton & Morgan, Hartford, Conn.

The letter was posted in New Orleans on May 27, 1884
where it received a barred ellipse cancellation with the numeral 3.

Addressed to:

Mrs. J. J. Read
c/o W. F. Read
Bryan, Texas.

Received *five* days later on June 1, 1884. (Bryan is approximately
550 miles from New Orleans, just 100 miles northwest of Houston, and this
seems to be a rather long time even for 1884 mail delivery.)

LOUISIANA POSTAL HISTORY



Regular Issue of 1875

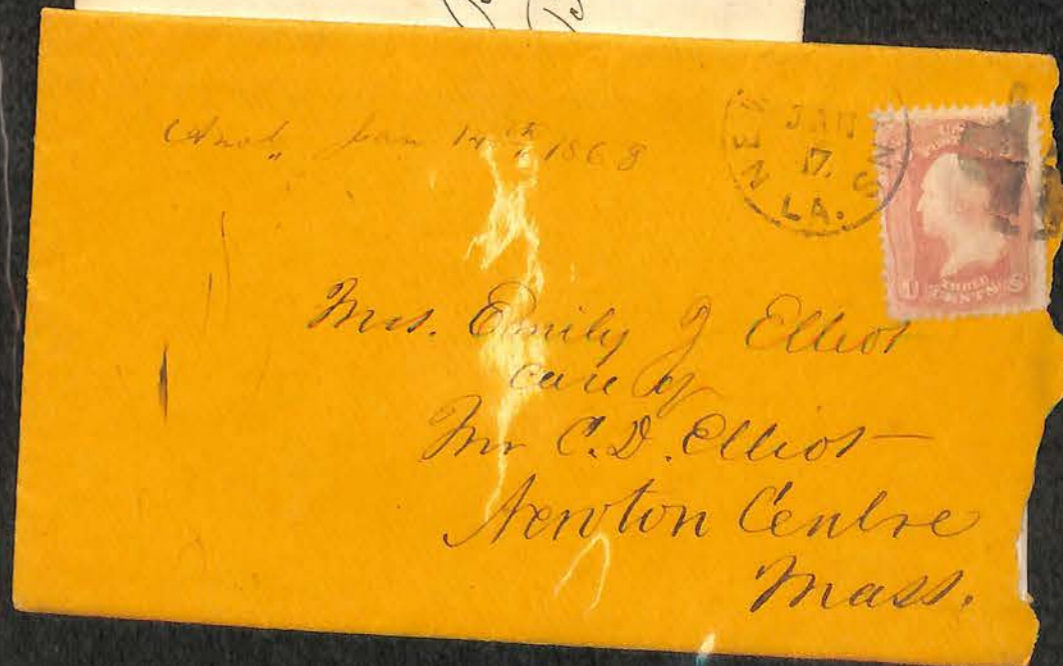
Printed by the Continental Bank Note Company
Scott No. 179, 5¢ Zachary Taylor (blue)

Posted in New Orleans, December 11, 1878 to France.
Leisy & Co. acted as the forwarding agent.

French receiving marks front and rear.

The five cent rate to foreign countries in the Universal Postal Union
began on July 1, 1875.

No. 179 was issued for that purpose.



LOUISIANA POSTAL HISTORY



Postal Stationery Issue of 1874-86.

Scott No. U165, Thorpe 559, Die 57 (B)
3¢ Washington (green) on cream colored paper.

Printed by the Plimpton Manufacturing Co., Hartford, Connecticut.

Posted in New Orleans on December 24, circa 1878 and
cancelled with one of the popular "crossroads" carved cork killers.



IMPORTANT.

Address **M. A. DAUPHIN, NEW ORLEANS, LA.**

Ordinary Letter, containing MONEY ORDER issued by all Express Companies, NEW YORK EXCHANGE, DRAFT or POSTAL NOTE.

Letters containing Currency to **THE NATIONAL BANK, New Orleans, La.**

For a rapid delivery of their mail, to enclose an envelope thus preventing mistakes. The omission of the Countersignatures, or Signatures and mis-sending. Fancy Signatures, or Signatures

Directing to all correspondents, or on application to the Express or other collecting agency. In some States, it is impossible to furnish

*Mr. Wm. Saligens
Belville
Gloucester C.H.
Virginia*



sent too
ing.

the ticket is
er is payable in
PHIN, President;
erals BEAUREGARD
onal Banks, through
their counters.

once a month, sells no
other ticket except the one
ded to deceive and defraud
drawing than our Official List
of drawn numbers to see if you have
won a Prize, and, if the Vendor
who sold you your ticket does not
your request, produce the Official
Drawing of the LOUISIANA STATE LOTTERY Co., please send to New
Orleans for a Drawing, addressing

M. A. DAUPHIN.

**CLUB RATES—\$55.00 in Tickets for \$50.00.
Liberal Terms to Agents.—Agents Wanted.**

The only Lottery of any State in the Union endorsed by a vote of the People.

Return to **N. O. CANAL & BANKING CO.,**
Cor. Camp & Gravier Sts., **NEW ORLEANS, La.,**
If not delivered within 5 days.



Mrs. Elizabeth Weston

Answered,

Aug 1875



110083752658 1875 Amite City
Thank you! - Chris

*Mrs Emily J.
Care of G. D. Elliot
Sommerville
(Near Boston) Mass.*

L. S. L.
M. A. DAUPHIN.

New Orleans, OCT 24 1889.

Dear Sir:

Your Remittance as stated is received
Inclosed please find

Wholes,
Halves, }

Quarters,
Tenths,
Twentieths, }

Tickets for \$1.00

To press Cr \$2.00

LIST OF PRIZES WILL BE SENT IMMEDIATELY AFTER THE DRAWING.
And will also be published in the leading papers of the United States, to-wit:

WASHINGTON, Post, Star--LOUISVILLE, KY., Courier-Journal--ATLANTA, GA., Constitution--SAVANNAH,
GA., News--MEMPHIS, TENN., Appeal--GALVESTON, News--FORT WORTH, Gazette--DALLAS, TEXAS,
News--HOUSTON, TEX., Post--ST. LOUIS, MO., Star Sayings--DES MOINES, IOWA, Leader--MONTREAL,
CAN., Le Monde--SAN FRANCISCO, CAL., Call. Demokrat. Abend Post, Post, Alta California, Chronicle,
Examiner, Report--SACRAMENTO, Bee--OAKLAND, CAL., Tribune, Times--LOS ANGELES, CAL., Herald,
Express--DAVENPORT, IOWA, Democrat Gazette--MONTGOMERY, ALA., Advertiser--FARGO, DAKOTA,
Argus

Respectfully,

M. A. DAUPHIN.

REMARKS.

(Directions for Mailing on the other Side.)

XEROX



T1634 T1634S

LOUISIANA
CR- #29
SERIES 1878
BOND
\$ 35.00



STAPLES®

Postmark: New Iberia Date: 8-30-1898

267a Color pink

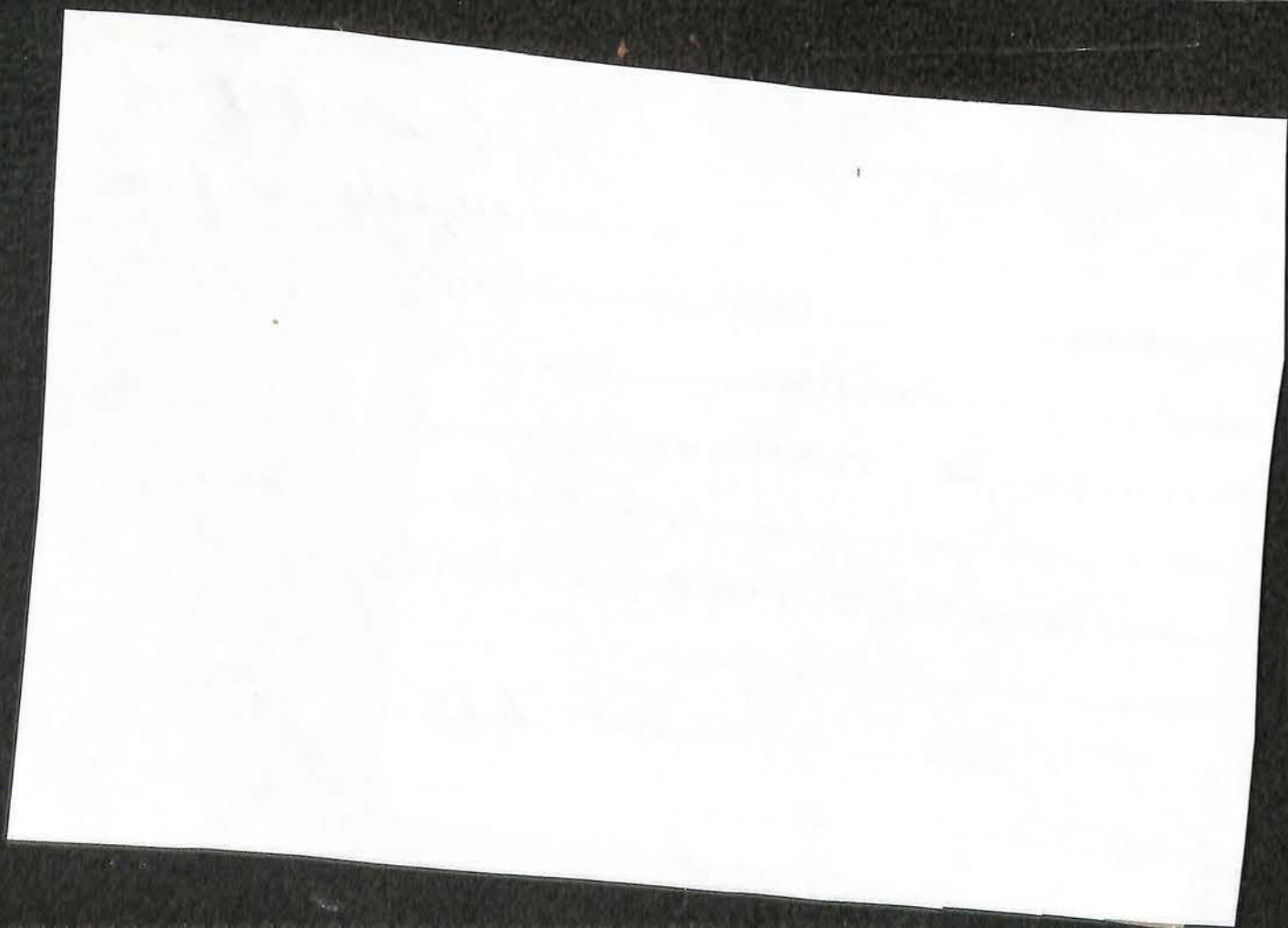
..... Wmk..... mm

oy () J. T. Hardie ()





BALLO & WEAVER





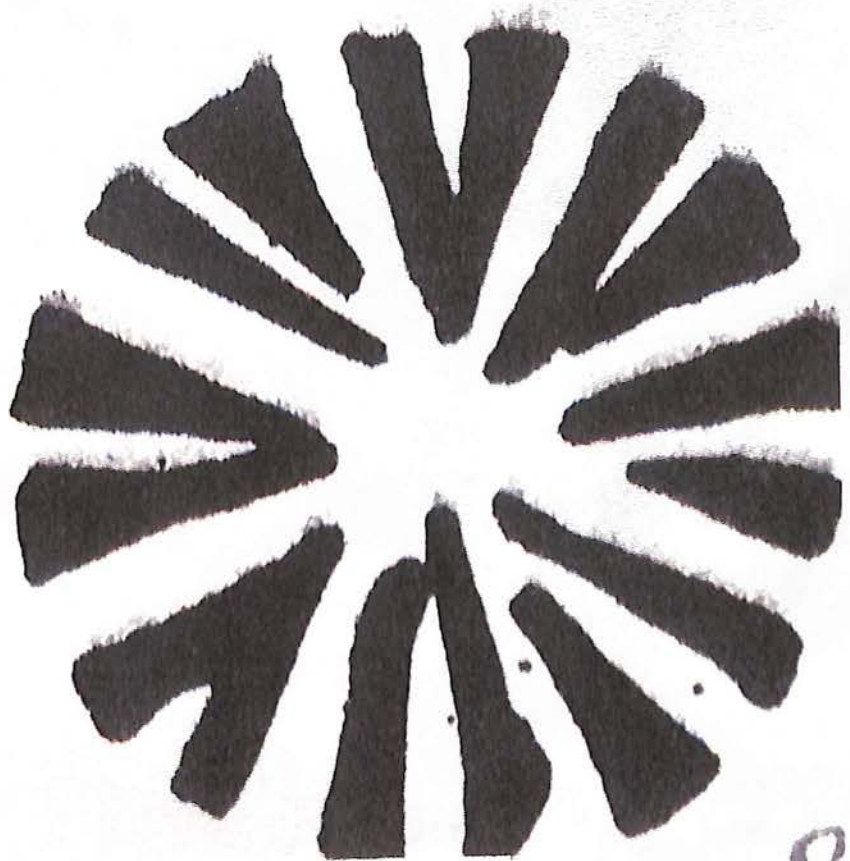


NO

OK. ^{double} WP 3C-39 Price 15.38



Item No. GK-102BK



P

Pinv

TEMPLE S. COONS & CO.,
General Grange Agents
Cotton Factors, Commission Merchants,
And Special Grange Agents for States of Missis-
sippi, Arkansas, Alabama, Tennessee and Kansas.
No. 61 Carondelet Street, NEW ORLEANS, LA.

NEW ORLEANS, LA.
MAR 11
7 AM

3 CENTS
3 CENTS

To
Ed D Flicks
Nashville
Tenn

Geo B Roberts

U. S. ENTIRES



AVERY™ PV119E

Postmark:N.
 Issue of:
 Thorpe-Bartels...
 Stamp Color
 CDS23.....
 Sender.....
 Addressee: Buch:
 Other:
 Remarks.....P.
109-

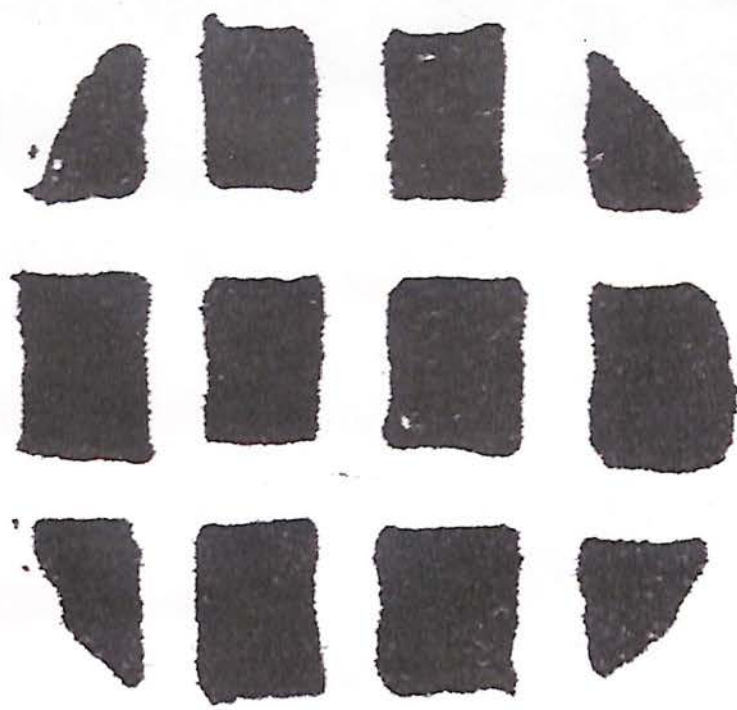


PLAQUEMINE, Louisiana, 1888
 Iberville County, 1822-Date

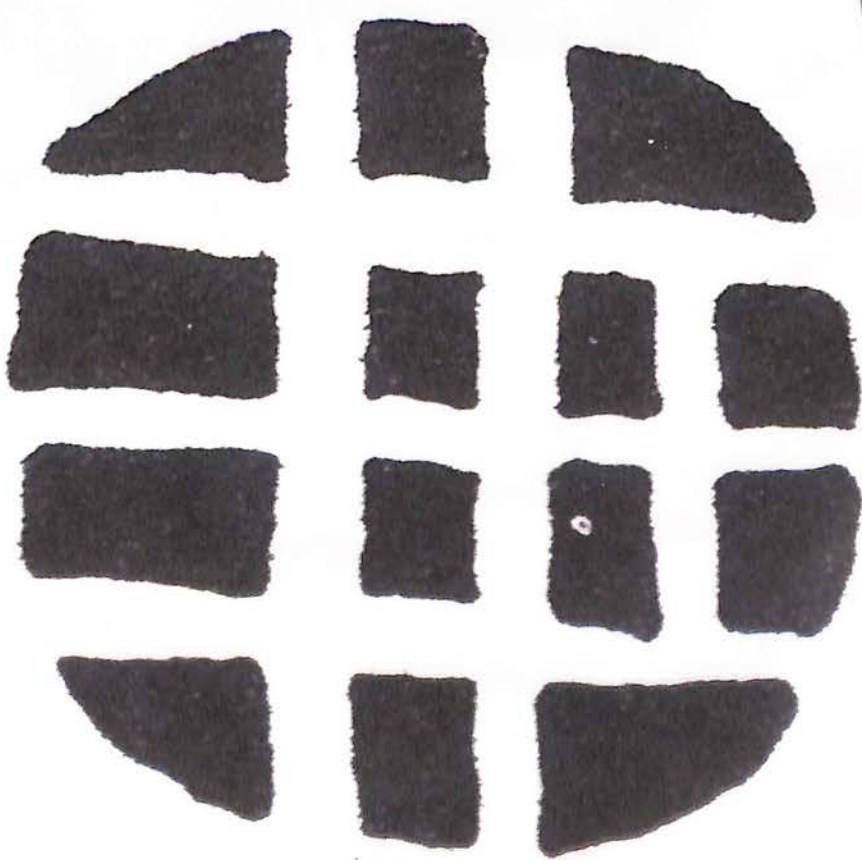
Net \$4.00



Can E.



G D 18



G D 19



LOUISIANA POSTAL HISTORY

Postmark: Date: *23 Aug 1879c*

Issue of: Scott Color

Thorpe-Bartels..... Die..... Type.....

Stamp Color Paper Color Knife: Size: Wmk.....

CDS mm Physical Size of Envelope mm

Sender..... Forwarding Agent

Addressee: Buchanan, Carroll () Carroll, Hoy () Joseph Hoy () J. T. Hardie ()

Other:

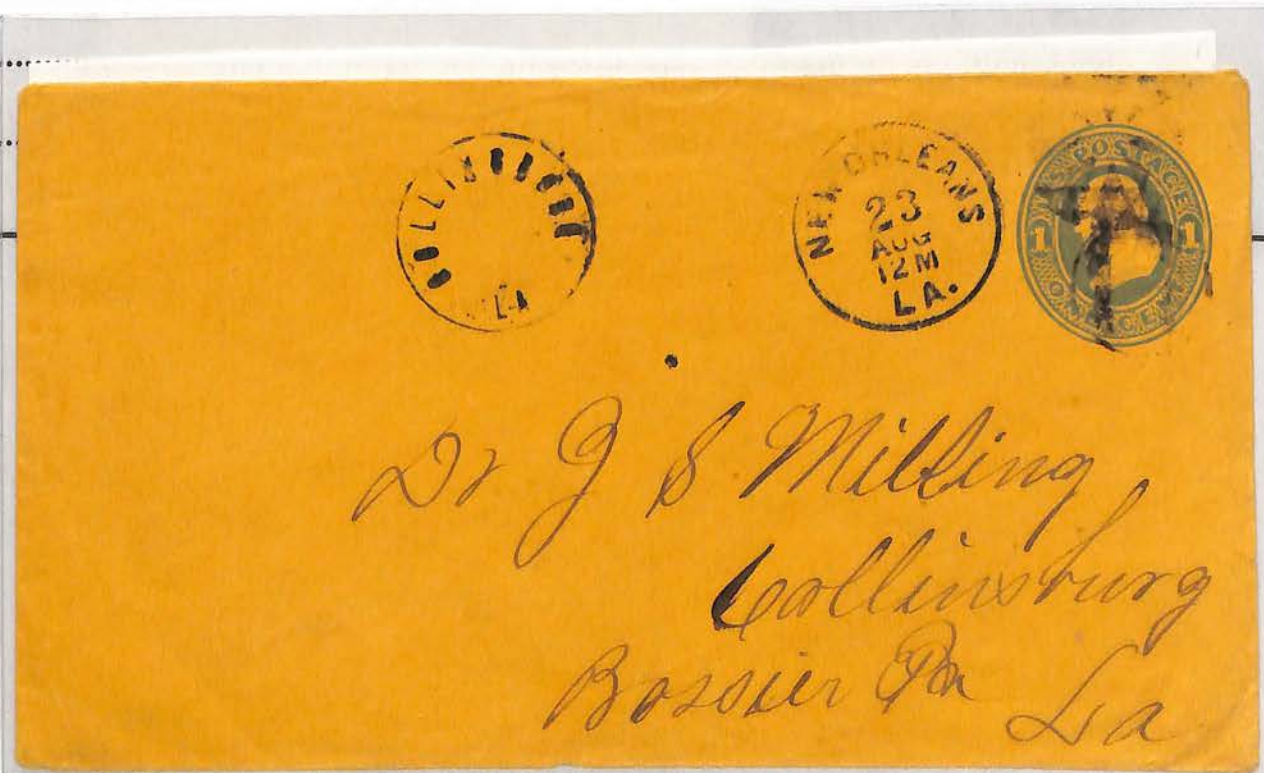
Source Cost \$

Remarks.....

.....

.....

.....



If not called for in Ten Days, return to
HENRY OTIS,
112 Magazine St., New Orleans.

Miss. Hoffman
Fort-Myer
of
London

