



401



402



403



404



405



158
668

569
579

UNITED STATES

1929

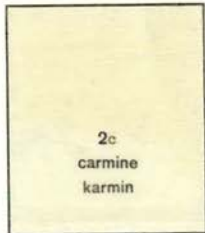
Regular Issue of 1926-27

Overprinted Kans.



Freimarken 1926-27

mit Aufdruck Kans.



2c
carmine
karmin



INTERNATIONAL PHILATELIC EXHIBITION, OCT. 16TH TO 23RD 1926

18771



18771

18771



18771

NEW

YORK

N.Y.

U.S.A.

POSTAGE

Printed by the National Bank Note Co.

With Grill




POSTAGE

Printed by the National Bank Note Co.

1861

First Issue

Perforated 12

| | | | | |
|---|------------------------------|--------------------------|--------------------------------|---|
| Designs of Second Issue 1 C INDIGO (55) | 3 C BROWN RED (56) | 5 C BROWN (57) | 10 C DARK GREEN (58) |  (59) |
|---|------------------------------|--------------------------|--------------------------------|---|

| | | |
|----------------------------|--------------------------------|-------------------------------|
| 24 C VIOLET (60) | 30 C RED ORANGE (61) | 90 C DULL BLUE (62) |
|----------------------------|--------------------------------|-------------------------------|

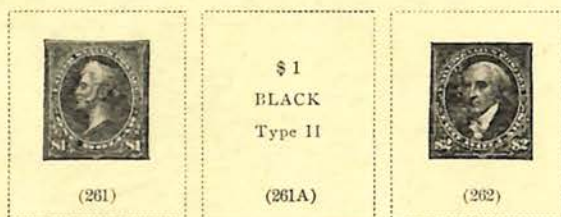
Second Issue

| | | | | |
|---|---|--|---|--|
|  | 3 C ROSE (63) <i>95⁰⁰</i> | 3 C LAKE (66) |  |  |
|  |  |  |  | (71) <i>50⁰⁰</i> |
|  | 3 C SCARLET (74) | 5 C RED BROWN (75) | 5 C BROWN (76) | -66 |
|  | 24 C LILAC (77) | 24 C LILAC (78) | | |

POSTAGE

Since 1894 all postage stamps except Nos. 909 to 921 have been
Engraved and Printed by the Bureau of Engraving and Printing

1894



POSTAGE

Watermarked **USPS**

1912

| | |
|-----------------------------|--|
| 50 C VIOLET (422) | <i>Franklin</i> \$1 VIOLET BROWN (423) |
|-----------------------------|--|

Watermarked **USPS**

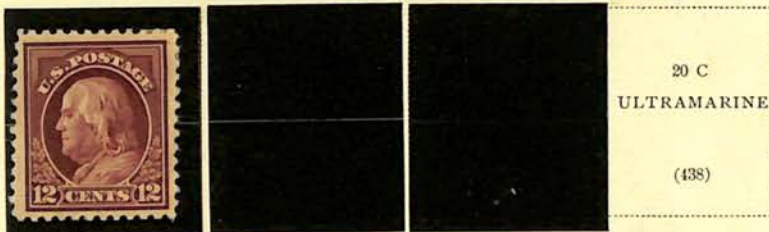
1914-15

Perforated 10



7 C
BLACK

(430)



20 C
ULTRAMARINE

(438)

30 C
ORANGE RED

(439)

50 C
VIOLET

(440)

POSTAGE

Watermarked USPS

1914-16

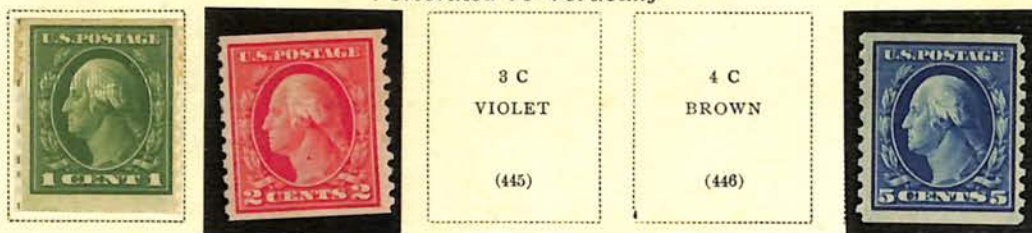
Flat Plate Printing

COIL STAMPS

Perforated 10 Horizontally



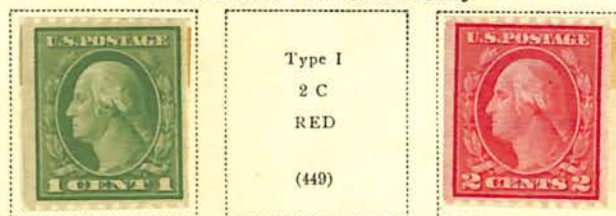
Perforated 10 Vertically



Rotary Press Printing

COIL STAMPS

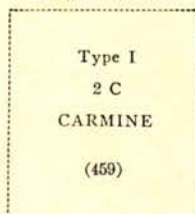
Perforated 10 Horizontally



Perforated 10 Vertically



Imperforate

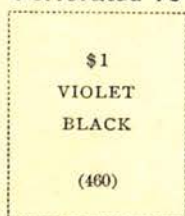


Flat Plate Printing

1915

Watermarked USPS

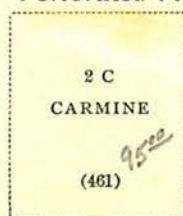
Perforated 10



1915

Watermarked USPS

Perforated 11



POSTAGE

Watermarked USPS
 ROTARY PRESS COIL STAMPS
 1914-16
 Perforated 10 Horizontally



Type I
 2 C
 RED

110⁰⁰
 (449)

Type III
 2 C
 CARMINE

(450)
 40⁰⁰

Perforated 10 Vertically



Type I
 2 C
 RED

(453)

Type II
 2 C
 CARMINE

(454)



Type I
 3 C
 VIOLET

(456)



5 C
 BLUE

(458)

Imperforate
 1914

Type I
 2 C
 CARMINE

(459)

POSTAGE

Unwatermarked
ROTARY PRESS COIL STAMPS
1916-19

Perforated 10 Horizontally



1916-22

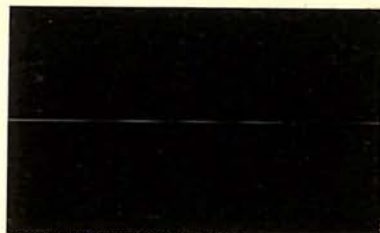
Perforated 10 Vertically



Type II
2 C (491)
CARMINE



4 C (495)
ORANGE
BROWN



POSTAGE

Unwatermarked
1916-17
Imperforate



Type Ia
2 C
CARMINE

(482A)



Rotary Press
COIL STAMPS
1916-22

Perforated 10 Horizontally



Perforated 10 Vertically



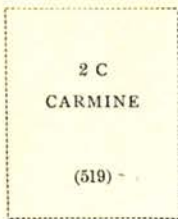
POSTAGE

Watermarked **USPS**

1917

Flat Plate Printing

Perforated 11



1918

Unwatermarked

Perforated



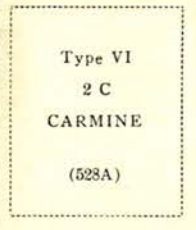
DEEP GREEN
AND BLACK

Unwatermarked

1918-20

Offset Printing

Perforated 11



POSTAGE

Unwatermarked
1918-20
Offset Printing
Imperforate



1919
Offset Printing
Perforated 12½



1919
Flat Plate Printing
Perforated 11



POSTAGE

Unwatermarked

1919-21

Rotary Press Printing

Perforated 11x10



Perforated 10x11



Perforated 10



Perforated 11



Perforated 11



1920

Flat Plate Printing

Perforated 11

Type of Issue of 1918
\$2
CARMINE
AND BLACK
(547)

Pilgrim Tercentenary Issue



POSTAGE

Unwatermarked

1923-25

Imperforate



Rotary Press Printing

Perforated 11 x 10



1923-26

Perforated 10



Perforated 11

Size:
19 $\frac{3}{4}$ x 22 $\frac{3}{4}$ mm.
1 C
GREEN
(504)

2 C
CARMINE
(505)

Size:
19 $\frac{3}{4}$ x 22 $\frac{3}{4}$ mm.
1 C
GREEN
(506)

POSTAGE

Unwatermarked
1923-29
Rotary Press Printing
Coil Stamps
Perforated 10 Vertically



Perforated 10 vertically



Perforated 10 horizontally



1923

Harding Memorial Issue

Flat Plate Printing

Rotary Press Printing

Perforated 11

Imperforate

Perforated 10



Flat Plate Printing
Perforated 11
1924

Huguenot-Walloon Tercentenary Issue



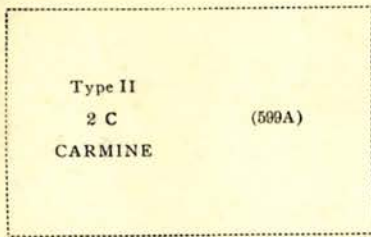
1925

Lexington-Concord Issue



POSTAGE

Unwatermarked
ROTARY PRESS COIL STAMPS
1923-29
Perforated 10 Vertically



Perforated 10 Horizontally



POSTAGE

Unwatermarked

1931

FLAT PLATE PRINTING

Perforated 11

Pulaski Issue



ROTARY PRESS PRINTING

Perforated 11x10½



Perforated 10½x11



FLAT PLATE PRINTING

Perforated 11

Red Cross Issue



Yorktown Issue



POSTAGE

Unwatermarked
ROTARY PRESS COIL STAMPS
1939

Perforated 10 Vertically



Perforated 10 Horizontally



POSTAGE

Watermarked USPS

1910-11

Perforated 12

Types of
Issue of 1908-09
1 C
GREEN
(374)



3 C
DEEP
VIOLET
(376)



5 C
BLUE
(378)

6 C
RED
ORANGE
(379)



10 C
YELLOW
(381)

15 C
PALE
ULTRA-
MARINE
(382)

1911

Imperforate

1 C
GREEN
(383)

2 C
CARMINE
(384)

COIL STAMPS

1910-11

Perforated 12 Horizontally

1 C
GREEN
(385)

2 C
CARMINE
(386)

1 C
GREEN
(387)

2 C
CARMINE
(388)

3 C
DEEP
VIOLET
(389)

Perforated 12 Vertically

1910-13

Perforated 8½ Horizontally



2 C
CARMINE
(391)

Perforated 8½ Vertically

1 C
GREEN
(392)

2 C
CARMINE
(393)

3 C
DEEP
VIOLET
(394)

4 C
BROWN
(395)

5 C
BLUE
(396)



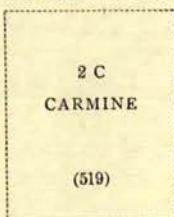
POSTAGE

Watermarked USPS

1917

Flat Plate Printing

Perforated 11



1918

Unwatermarked

Perforated 11

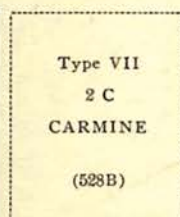
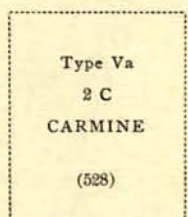
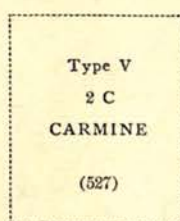
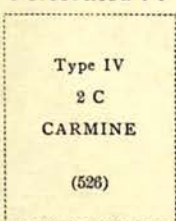


Unwatermarked

1918-20

Offset Printing

Perforated 11



POSTAGE

Unwatermarked

1923-25

Imperforate



Rotary Press Printing

Perforated 11 x 10



1923-26

Perforated 10



Perforated 11

Size:
19 $\frac{1}{4}$ x 22 $\frac{3}{4}$ mm.

1 C
GREEN

(594)

2 C
CARMINE

(595)

Size:
19 $\frac{1}{4}$ x 22 $\frac{3}{4}$ mm.

1 C
GREEN

(596)

POSTAGE

Unwatermarked
ROTARY PRESS COIL STAMPS
1923-29
Perforated 10 Vertically



Type II
2 C (599A)
CARMINE



Perforated 10 Horizontally



UNITED STATES

1895
Watermarked USPS



BENJAMIN FRANKLIN 264
W.M.



GEORGE WASHINGTON 265
W.M. OK



GEORGE WASHINGTON 266
W.M.



GEORGE WASHINGTON 267
W.M.



ANDREW JACKSON 268



ABRAHAM LINCOLN 269



ULYSSES S. GRANT 270



JAMES A. GARFIELD 271



WILLIAM T. SHERMAN 272



DANIEL WEBSTER 273
W.M.



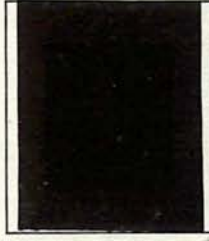
W.M. HENRY CLAY 274



THOMAS JEFFERSON 275
W.M.



OLIVER HAZARD PERRY 276
W.M. OK



OLIVER HAZARD PERRY 276A
W.M.



JAMES MADISON



JOHN MARSHALL

These varieties have the same designs as the 1894 issue, but were printed on paper watermarked with the double-line letters USPS, so arranged that one letter or a portion of one appears on each stamp. This was the first time that stamps for postal use were watermarked, and it was done to prevent counterfeiting.

1898
Watermarked USPS



279



279c
W.M. OK



BENJAMIN FRANKLIN 279



GEORGE WASHINGTON 279B



ABRAHAM LINCOLN 280



280b



ULYSSES S. GRANT 281



JAMES A. GARFIELD 282



DANIEL WEBSTER 282c



DANIEL WEBSTER 283
W.M.



W.M. HENRY CLAY 284

AIR POST STAMPS

1918

Unwatermarked



1926-27



1927



1928



1930



1913

Parcel Post

Approved on August 24, 1912 by the Act of Congress, the Postmaster General directed that regular postage stamps could be used on parcel post packages which began on January 1, 1913. These issues were in full force until the supply was exhausted. Remainders, consisting of 3,510,345 of the 75 cent issues were destroyed in September, 1921. There were no printing made after the first printings.

Post Office Clerk



1c car

Q1

City Carrier



2c car

Q2

Railway Postal Clerk



3c car

Q3

Rural Carrier



4c car

Q4



5c car

Q5

Steamship and Mail Tender



10c car

Q6

1913

Parcel Post

Automobile Service



15c car

Q7

Aeroplane Carrying Mail



20c car

Q8

Manufacturing



25c car

Q9

Dairying



50c car

Q10

Harvesting



75c car

Q11

Fruit Growing



\$1 car

Q12



NEWSPAPER
TAX STAMPS

United States of America.

264
Type 11



249



250



251



252



253



254



255



256



257



258



259



260



261



262



263



264



265



266



267



268



269

Type 124



270



271



272



273



274



275



276



277



278



279



280



281



282



283



284



285



286



287





