

# LARGE CENTS



1802  
AG



1802



1803



1805



1816



1817  
Large



1817  
small



1818



1818



1819  
Large  
date



1819  
Small  
date



1820



1820  
Small  
date



1822



1825



1827



# LARGE CENTS



1831



1834  
Good



1835



1837  
VG



1837



1838



1839



1842



1843  
Good  
pitted



1844  
Good



1845



1845



1846



1846  
Good



1846



1847



# LARGE CENTS



1847



1848



1848  
VG



1849 VF



1849



1850  
G+



1850



1851



1851  
VG



1852



1852



1853



1853



1854  
VG



1854



1855





# LARGE CENTS



1857



1857  
Broken  
Die



1835



## $\frac{1}{2}$ CENTS



1800 Good



1803 Good



1803 Good



1803  
VG-8



1804 VG  
stem less



1806 VG  
stem less



1805 Fine





# LARGE CENTS



1805 VG  
Stemless



1805



1805 Fine  
NO STEMS



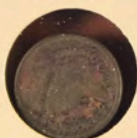
1807



1809



1809 Good



1809 Good  
VG 8



1809 VG 8  
2 below 1  
0 below 6+9  
Leaf midway 5-6  
u near ribbon



1809 AG  
  
Corroded



1809  
Good



1828



1828 F 12  
12 STARS



1829



1835  
VF



1835  
Fine



1851

