

**PHILIPPINE TYPE SET COLLECTION**  
**SPANISH-PHILIPPINE ISSUES**

**ISABEL II (1833-1868)**



**10 Centavos de Peso**  
1864-1868



**20 Centavos de Peso**  
1864-1868



**50 Centavos de Peso**  
1865-1868

**ALFONSO XII (1874-1885)**



**10 Centavos de Peso**  
1880-1885



**20 Centavos de Peso**  
1880-1885



**50 Centavos de Peso**  
1880-1885

**ALFONSO XIII**  
**(1886-1931)**



**One Peso**  
1897

# PROPERTIES OF POLYMER

## MECHANICAL PROPERTIES



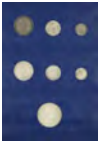
## PHYSICAL PROPERTIES



## CONCLUSION







# PHILIPPINE TYPE SET COLLECTION

U. S.—PHILIPPINE ISSUES

## HALF CENTAVO



1903-1908



1903-1936



1937-1944  
(Commonwealth)

## FIVE CENTAVOS



1903-1928



1930-1935



1937-1945  
(Commonwealth)

## TEN CENTAVOS



1903-1906



1907-1935



1937-1945  
(Commonwealth)

## TWENTY CENTAVOS



1903-1906



1907-1929



1937-1945  
(Commonwealth)

## Handwritten Numbers and Symbols

Handwritten Numbers



0



1



2



3



4



5



6



7



8



9



10



11

Handwritten Symbols



+



-



\*



/



%



^



&



@



#



\$

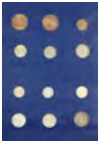


%



&





**PHILIPPINE TYPE SET COLLECTION**

**U. S.—PHILIPPINE ISSUES**

**FIFTY CENTAVOS**



1903-1906



1907-1921



1944-1945  
(Commonwealth)

**ONE  
PESO**



1903-1906



1907-1912

**1936-M COMMONWEALTH COMMEMORATIVES**

**FIFTY CENTAVOS**

**ONE PESO**



Murphy-Quezon

**ONE PESO**



Murphy-Quezon



Roosevelt-Quezon

## PROVINCIAL COINAGE

### 1858-1862



1858-1862



1858-1862



1858-1862



1858-1862



1858-1862



1858-1862

### 1863-1867



1863-1867



1863-1867



1863-1867



1863-1867



1863-1867





**PHILIPPINE TYPE SET COLLECTION**  
**REPUBLIC ISSUES**

**FIFTY CENTAVOS**  
(SILVER)



**1947-S**  
**MacArthur**  
**Commemoratives**

**ONE PESO**  
(SILVER)



**CENTRAL BANK**

**ONE**  
**CENTAVO**



**1958-**  
**(BRONZE)**

**FIVE**  
**CENTAVOS**



**1958-**  
**(BRASS)**

**TEN CENTAVOS**



**1958-**  
**(COPPER-NICKEL)**

**TWENTY-FIVE**  
**CENTAVOS**



**1958-**  
**(COPPER-NICKEL)**

**FIFTY CENTAVOS**



**1958-**  
**(COPPER-NICKEL)**

**JOSÉ RIZAL CENTENNIAL COMMEMORATIVES**  
**1961**

**ONE**  
**PESO**  
(SILVER)



**FIFTY**  
**CENTAVOS**  
(SILVER)



